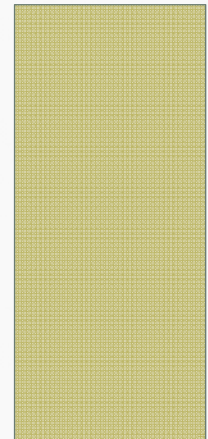




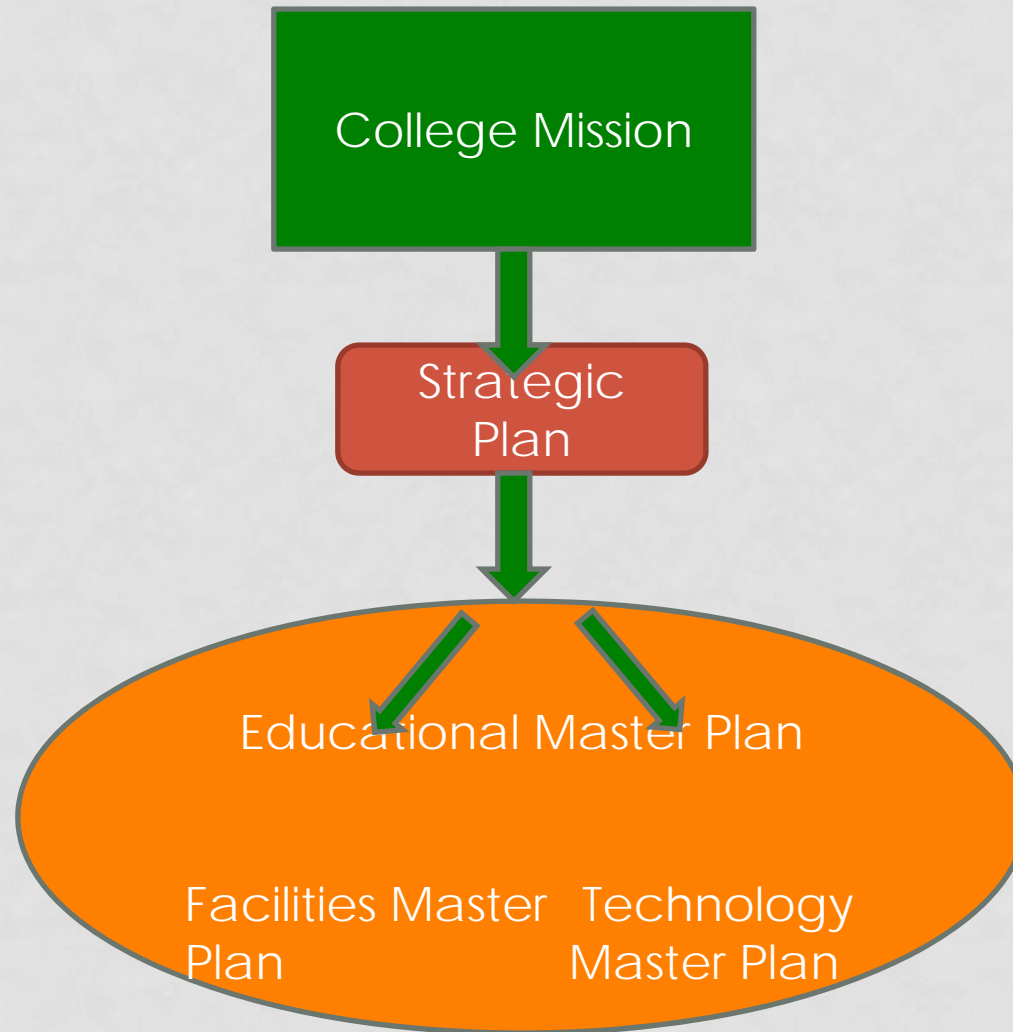
# EAST LOS ANGELES COLLEGE FACILITIES MASTER PLAN

Dr. Ryan M. Corner  
Dean of institutional Effectiveness



August 21, 2013 – Facilities Master Planning and Oversight Committee

# ELAC PLANNING IN SUMMARY



# ELAC PLANNING IN SUMMARY

- 2011 – Strategic Plan is approved by the Board of Trustees
- November 2012 – College Master Plans are presented to the Board Institutional Effectiveness Committee
- January 2013 – Educational Master Plan approved by the Board of Trustees
  - Facilities and Technology Master Plans are pulled for CEQA review

# A NEW MASTER PLAN

- All currently planned buildings carried over
- Recognizing the value of the facilities already available
  - Plans for maximizing facilities usage
  - Improving safety and emergency planning
  - Improving the aesthetics of the campus
  - Greater engagement with the community

# SUMMARY OF CHANGES

- The 2012 Update **does not propose any additional construction or demolition** beyond that which has already been proposed and analyzed. Also, the 2012 Update does not propose to accommodate any additional student enrollment, or faculty or staff and as such would not result in increased vehicle trips or parking need. No new or substantially greater significant impacts would result.
- *Required Finding: **No substantial changes** are proposed for the project that require major revisions of the previous EIR due to the involvement of new, significant environmental effects or a substantial increase in the severity of previously identified significant effects.*



# TECHNOLOGY MASTER PLAN

- The 2009 SEIR and this 2012 Update continue to include the facilities required to implement the 2012-2018 Technology Master Plan and its prior iterations.
- The 2012-2018 Technology Master Plan provides for maintaining and expanding wireless and other online and technology features, such as online portal systems and increased speeds and mobile efficiency, which do not require physical facilities and are supported by the facilities contained in the Facilities Master Plan as a whole.