

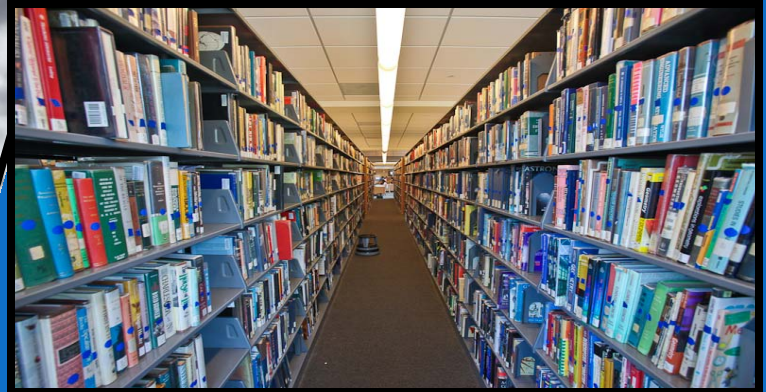
District Citizens' Oversight Committee

PROPOSITIONS A/AA & MEASURE J 2012-2013 ANNUAL REPORT

LOS ANGELES COMMUNITY COLLEGE DISTRICT

OUR COLLEGES:

- ⇒ EAST LOS ANGELES COLLEGE (ELAC)
- ⇒ LOS ANGELES CITY COLLEGE (LACC)
- ⇒ LOS ANGELES HARBOR COLLEGE (LAHC)
- ⇒ LOS ANGELES MISSION COLLEGE (LAMC)
- ⇒ LOS ANGELES SOUTHWEST COLLEGE (LASC)
- ⇒ LOS ANGELES TRADE-TECH COLLEGE (LATTC)
- ⇒ LOS ANGELES PIERCE (LAPC)
- ⇒ LOS ANGELES VALLEY COLLEGE (LAVC)
- ⇒ WEST LOS ANGELES COLLEGE (WLAC)



The DCOC official website is <http://laccdbuildsgreen.org/about-oversight.php>

To the Los Angeles Community College District Community:

Thank you for your interest in this annual report by the Los Angeles Community College District Citizens Oversight Committee (DCOC). Whether you are personally involved in the bond program as a district employee, are a member of a user group or the student body at one of LACCD's nine colleges, or are merely a curious taxpayer, you will find much of interest in the pages that follow. We have shown in great detail the ongoing work on the bond program, whether it be construction, renovation or upgrades along with information on furnishings and equipment for the projects at the nine colleges and satellite campuses, all funded by bond propositions A, AA and measure J.

Much has been accomplished in the bond program over the last year. A new program management company, AECOM, has been hired, a new centralized system of operation has been implemented, new positions – a risk manager and lead construction counsel – have been created and filled, and new internal audits have been added. In addition, a reserve fund has been established to assure that money is available for any unforeseen expenses accrued in the ongoing construction projects.

Operating in this new environment, the DCOC is maintaining its focus while increasing its visibility. The committee will continue to review any construction-related concerns, master-plan revisions, significant change orders, construction schedules and financial matters related to the program. In the three years ahead, the DCOC will meet at each of the nine LACCD colleges in order to increase its familiarity with the projects at each of the campuses.

The mission of the bond program will remain the same: The creation of state-of-the-art structures that provide a user friendly, financially sustainable environment, affording faculty and students the ideal conditions to pursue the quest for academic success. While the bricks and mortar form the foundation of these structures, it is the buildings themselves that form the foundation for the classrooms and labs that serve as a launching pad for students determined to qualify for higher levels of education or acquire skills that will enable them to succeed in the workplace.

The LACCD student body is a diverse group. There are high-school students getting an early sample of college. There are full-time and part-time students seeking a two-year degree, some to transfer to a four-year college, others pursuing the academic and occupational requirements necessary for a trade or for a license in various fields. Finally, there are students taking adult-education classes at night. Whatever their past history may be, the future of all of LACCD's students is brighter because of the projects produced by the bond program.

The DCOC consists of volunteers from various backgrounds and communities. Each community college is represented as are the student body, taxpayers, seniors, labor, business, the Foundations, and members representing the community at large, as shown on page 2, "Current Committee Members". All DCOC members have passed conflict of interest tests. The committee meets six times per year, and more frequently in ad-hoc subcommittees created to address special issues. These subcommittees provide recommendations to be considered at DCOC meetings. The DCOC receives its information about the bond program from LACCD staff members, along with supplemental reports from the college campuses. In addition, the DCOC reviews bond program financial and performance audits, and interacts with the LACCD Board of Trustees, and the Chancellor's Office. All DCOC meetings are recorded. Those recordings, along the minutes of the meetings are available to the public at laccdbuildsgreen.org.

It has been an honor to have served on the DCOC these past four years, including my role as chair last year. I salute those who have contributed to the progress the DCOC has made in becoming more involved in the bond program. I thank the Board of Trustees and the Chancellor for their participation and support. Additionally, I want to express my appreciation for the involvement of the Chancellor's staff, the Chief Facilities Executive, the Director of Facilities, Planning and Development, the program management company and the chief counsel in our deliberations. Finally, a special thanks to Ms. Nancy Carlson, my predecessor, and Mr. Daniel Swartz, my successor. I apologize for any unintended omissions.

Elliot Axelband, Outgoing Chairperson, DCOC

TABLE OF CONTENTS

| | |
|--|-------|
| About the District..... | 5 |
| Our Members..... | 6 |
| DCOC Meeting Schedule & LACCD Board of Trustees..... | 7 |
| District Bond Program Facts..... | 8 |
| Significant Changes & Year in Review..... | 9 |
| East Los Angeles College (ELAC) Project Highlights..... | 10 |
| ELAC Project List..... | 11 |
| Los Angeles City College (LACC) Project Highlights..... | 12 |
| LACC Project List..... | 13 |
| Los Angeles Harbor College (LAHC) Project Highlights..... | 14 |
| LAHC Project List..... | 15 |
| Los Angeles Mission College (LAMC) Project Highlights..... | 16 |
| LAMC Project List..... | 17 |
| Los Angeles Pierce College (LAPC) Project Highlights..... | 18 |
| LAPC Project List..... | 19 |
| Los Angeles Southwest College (LASC) Project Highlights..... | 20 |
| LASC Project List..... | 21 |
| Los Angeles Trade-Tech College (LATTC) Project Highlights..... | 22 |
| LATTC Project List..... | 23 |
| Los Angeles Valley College (LAVC) Project Highlights..... | 24 |
| LAVC Project List..... | 25 |
| West Los Angeles College (WLAC) Project Highlights..... | 26 |
| WLAC Project List..... | 27 |
| Satellites and Multicampus Project List..... | 28 |
| College Project Central Services Project List..... | 28-31 |
| Districtwide Initiatives Project List..... | 32-35 |
| Acronyms & Abbreviations..... | 36-37 |

ABOUT THE DISTRICT

The Los Angeles Community College District (LACCD) serves approximately 210,000 students a year in 40 cities across an area of 882 square miles. LACCD is, by many measures, the largest community college district in the United States. The LACCD is composed of nine comprehensive colleges and a central office, which together employ roughly 4,400 full-time and part-time faculty, and more than 5,400 full-time and part-time administrative and support staff, including about 1,800 part-time student workers. An elected, seven-member Board of Trustees, serving four-year terms, governs the LACCD. One student trustee, selected by the students, serves a one-year term beginning on June 1st of every year. Over the past 40 years, the colleges in the LACCD have served more than 2.6 million students.



Propositions A/AA and Measure J - District Citizens' Oversight Committee:

The Board of Trustees for the Los Angeles Community College District formed the District Citizens' Oversight Committee (DCOC) in June 2001 to provide a vital link between the District and the community with respect to implementation of Proposition A funds for construction and modernization projects within the District. The Proposition A bond measure totaled \$1.245 billion. The voters subsequently approved two additional bonds: Proposition AA and Measure J. Proposition AA bond measure totaled \$980 million and Measure J bond measure totaled \$3.5 billion. The DCOC consists of representatives from the local communities. The DCOC members are appointed for a two year term and can be re-appointed for an additional term not to exceed two consecutive two year terms.

Report Covers Fiscal Year 2012-13

This is the DCOC's formal annual report on bond money generated by Propositions A/AA and Measure J, consistent with the requirements of Proposition 39.

DCOC Establishment, Purpose and Responsibilities

As provided in Education Code section 15278, the District's Citizens' Oversight Committee was established by the Board of Trustees to inform the public concerning the District's expenditure of revenues received from the sale of bonds authorized by the voters on April 10, 2001, May 20, 2003 and November 4, 2008.

The District Citizens' Oversight Committee will provide oversight ensuring that:

- a. bond revenues are expended only for the construction, rehabilitation, or replacement of college facilities, including the furnishing and equipping of college facilities, or the acquisition or lease of real property for college facilities; and
- b. no bond revenues are expended for any teacher or administrative salaries or other college operating expenses.

Our Members:

Current Members:

DANIEL SWARTZ, **CHAIR**, **TAXPAYER REPRESENTATIVE**, PRINCIPLE, QUADRANGLE DEVELOPMENT COMPANY
LANNY NELMS, **COLLEGE REPRESENTATIVE**, PRINCIPAL, HARBOR COMMUNITY ADULT SCHOOL
EVA HOLMES, **COLLEGE REPRESENTATIVE**, SCHOOL ADMINISTRATOR, LAUSD (RETIRED)
MARK WILSON, **COLLEGE REPRESENTATIVE**, EXECUTIVE DIRECTOR, COALITION FOR RESPONSIBLE COMMUNITY DEVELOPMENT
TERRY ANDERSON, **COLLEGE REPRESENTATIVE**, ATTORNEY, ANDERSON & ASSOCIATES
BOB COURTNEY, **AT-LARGE REPRESENTATIVE**, PRESIDENT, COURTNEY PROPERTY & INVESTMENTS INC.
DAVID RATTRAY, **BUSINESS REPRESENTATIVE**, SR. VICE PRESIDENT OF EDUCATION & WORKFORCE DEVELOPMENT, LOS ANGELES CHAMBER OF COMMERCE
STUART LAFF, **FOUNDATION REPRESENTATIVE**, ASSOCIATE PRINCIPAL, ROTTET STUDIO
DAVID GOMEZ, **LABOR REPRESENTATIVE**, BUSINESS DEVELOPMENT ASSOCIATE, IBEW LOCAL 11 & NECA LOS ANGELES
ETHEL MCCLATCHY, **SENIOR REPRESENTATIVE**, PRESIDENT, EMERITUS CHAPTER, LA COLLEGE FACULTY GUILD, AFT/1521
LAMONT G. JACKSON, **STUDENT REPRESENTATIVE**, PRESIDENT, ASSOCIATED STUDENT ORGANIZATION, LASC

***PLEASE CHECK THE WEBSITE FOR UPDATES: [HTTP://WWW.LACCDBUILDSGREEN.ORG/ABOUT-
OVERSIGHT.PHP](http://www.laccdbuildsgreen.org/about-oversight.php)**

2012-13 Members:

DR. ELLIOT AXELBAND, **CHAIR**, **WLAC REPRESENTATIVE**, SENIOR ENGINEER, RAND CORPORATION
DANIEL SWARTZ, **VICE-CHAIR**, **TAXPAYER REPRESENTATIVE**, PRINCIPLE, QUADRANGLE DEVELOPMENT COMPANY
DONALD SAGUCHI, **ELAC REPRESENTATIVE**, VICE PRESIDENT OF ACADEMIC AFFAIRS, ELAC (RETIRED)
DAVID AMBROSE, **LACC REPRESENTATIVE**, THE WALT DISNEY COMPANY, STRATEGIC PHILANTHROPY & COMMUNITY ENGAGEMENT
LANNY NELMS, **LAHC REPRESENTATIVE**, PRINCIPAL, HARBOR COMMUNITY ADULT SCHOOL
ROBERT ARIAS, **LAMC REPRESENTATIVE**, PRESIDENT, COMMUNITIES IN SCHOOLS (CIS) GREATER LOS ANGELES
DONNA SMITH, **LAPC REPRESENTATIVE**, PRINCIPAL CHATSWORTH HIGH SCHOOL (RETIRED)
EVA HOLMES, **LASC REPRESENTATIVE**, SCHOOL ADMINISTRATOR, LAUSD (RETIRED)
MARK WILSON, **LATTC REPRESENTATIVE**, EXECUTIVE DIRECTOR, COALITION FOR RESPONSIBLE COMMUNITY DEVELOPMENT
TERRY ANDERSON, **LAVC REPRESENTATIVE**, ATTORNEY, ANDERSON & ASSOCIATES
BOB COURTNEY, **AT-LARGE REPRESENTATIVE**, PRESIDENT, COURTNEY PROPERTY & INVESTMENTS INC.
RICHARD SLAWSON, **AT-LARGE REPRESENTATIVE**, EXECUTIVE SECRETARY, LOS ANGELES/ORANGE COUNTIES BUILDING & CONSTRUCTION TRADES COUNCIL (RETIRED)
DAVID RATTRAY, **BUSINESS REPRESENTATIVE**, SR. VICE PRESIDENT OF EDUCATION & WORKFORCE DEVELOPMENT, LOS ANGELES CHAMBER OF COMMERCE
STUART LAFF, **FOUNDATION REPRESENTATIVE**, ASSOCIATE PRINCIPAL, ROTTET STUDIO
DAVID GOMEZ, **LABOR REPRESENTATIVE**, BUSINESS DEVELOPMENT ASSOCIATE, IBEW LOCAL 11 & NECA LOS ANGELES
ETHEL MCCLATCHY, **SENIOR REPRESENTATIVE**, PRESIDENT, EMERITUS CHAPTER, LA COLLEGE FACULTY GUILD, AFT/1521
JADEN LEDKINS, **STUDENT REPRESENTATIVE**, PRESIDENT, ASSOCIATED STUDENT ORGANIZATION, LACC

DCOC Contact Information

To contact the Los Angeles Community College District regarding the Propositions A/AA and Measure J Bond Program or members of the DCOC, please contact Lillian Mazariegos at telephone 213.891.2081 or email at MazariLD@email.laccd.edu. The District Office is located at 770 Wilshire Boulevard, Los Angeles CA 90017.

DCOC Regular Meetings

All meetings are open to the public, recorded and documented by minutes.

The schedule for 2013-14 is:

September 27, 2013, 12pm-2pm—ELAC

November 15, 2013 12pm-2pm—District Office

February 21, 2014, 12pm-2pm—WLAC

April 25, 2014, 12pm-2pm—Location to be determined

June 20, 2014, 12pm-2pm—Location to be determined

Please check the website for schedule/location changes:

<http://www.laccdbuildsgreen.org/about-oversight.php>

Los Angeles Community College District Board of Trustees:

Miguel Santiago, *President (Seat No. 7)*

Scott Svonkin, *Vice President (Seat No. 5)*

Mike Eng, *(Seat No. 2)*

Mona Field, *(Seat No. 1)*

Ernest H. Moreno, *(Seat No. 4)*

Nancy Pearlman, *(Seat No. 6)*

Steve Veres, *(Seat No. 3)*

Michael J. Griggs, *Student Trustee*

Chancellor:

Dr. Adriana Barrera (Interim)



DISTRICT BOND PROGRAM FACTS

Budget Overview:

Total: \$6,258,646,925

Contracted: \$4,804,765,490

Expended: \$4,038,975,496

Program Reserve: \$160,000,000

**Amounts reflect three bond issues, state funding and other sources*



There are 82 Leadership in Energy & Environmental Design (LEED) Projects:

- ♦ 30 LEED Building Certified:
 - 1 Platinum
 - 16 Gold
 - 9 Silver
 - 4 Certified
- ♦ 1 Leed Gold Certified Campus
- ♦ 26 Leed Building in Design (*includes projects not started and in procurement*)
- ♦ 25 LEED Building in Construction

Status of Projects:

- ⇒ 37 Projects are in Planning
- ⇒ 35 Projects in Design
- ⇒ 46 In Construction
- ⇒ 195 Projects are Complete
- ⇒ 26 Projects not Started
- ⇒ 35 On Hold

District Bond Program Audits, Reports and LACCD Responses

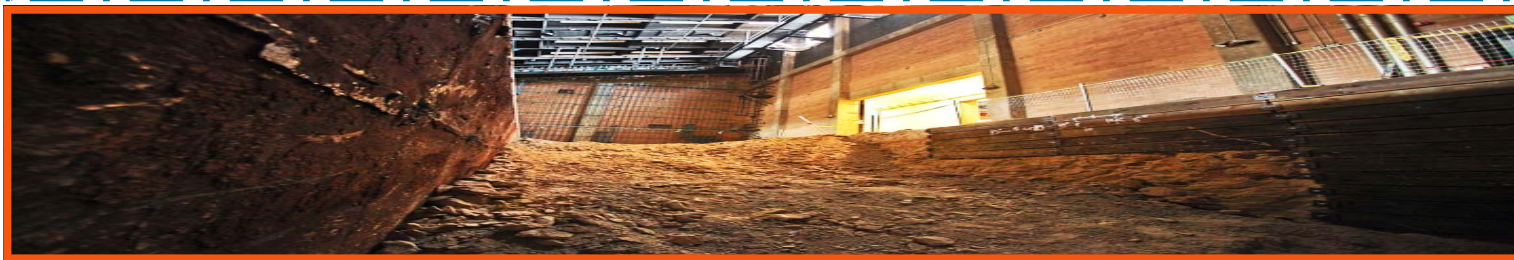
The following were completed and presented to the DCOC:

- Bond Performance Audit—Fiscal Year Ended June 30, 2012
http://www.laccdbuildsgreen.org/docs/about-oversight/bondConstructionProgram/performanceAudits/FY_2011-12_LACCD_PerformanceAudit.pdf
- 2012 Financial Performance Audit by KPMG <http://www.laccdbuildsgreen.org/docs/about-oversight/bondConstructionProgram/financialAudits/>
- OIG Recommendation Status Report 2010-2012
- LACCD Building Program Schedule http://www.laccdbuildsgreen.org/docs/about-oversight/dcocAgendas/Schedule_program_6-18-13.pdf

The reports can be found at <http://www.laccdbuildsgreen.org/about-oversight.php>.

SIGNIFICANT CHANGES IN BUILD PROGRAM

1. In April of 2013, the District hired AECOM, to serve as the new program manager (PM) for the bond program. Under the direction of Chief Facilities Executive James O'Reilly, AECOM oversees all aspects of the construction program and supervises the CPMs at all nine campuses. Under the new PM contract, there is a more centralized method of operation resulting in tighter control.
2. Under the centralized system, the CPMs report to the PM rather than to the college presidents. The presidents continue to oversee facilities master planning and design, making sure academic requirements remain the top priority.
3. The Office of Inspector General (OIG) is being replaced by a new position called Bond Program Monitor. While many of the duties will be similar to those of the OIG, auditing will no longer be a part of the job description. While outside auditing firms will continue to handle the performance and financial reports, a more proactive approach has been taken by adding internal auditing.
4. There is also a Risk Manager who will focus on identifying in advance any potential concerns with construction schedules, budget and litigation that could hinder the process.
5. In addition to the bond program counsel, who handles bond issues and compliance with Prop. 39, the District has added a lead construction counsel who deals with all potential litigation related to actual construction.
6. Because of the downturn of both the economy and the anticipated growth of the student population, a moratorium was instituted to give the District the time necessary to adequately review and adjust the building program in response to the changing landscape. Now that the moratorium has ended, the colleges are continuing to assess their bond resources, building responsibly within the fiscal constraints.
7. The colleges are updating their master plans to reflect those changes, putting more emphasis on the maintainability of those buildings that have been or will be completed.



2012-13 IN REVIEW

1. The DCOC voted to expand its visibility by moving more of its meetings, primarily held at District headquarters, to each of the nine college campuses of the Los Angeles Community College District.
2. The DCOC increased its focus on building progress, reviewing at each meeting any construction-related concerns.
3. The DCOC received and reviewed the college construction update reports from each of the nine CPM firms.
4. The DCOC was given regular updates on all legal issues facing the bond program.
5. The DCOC regularly reviewed construction schedules and the financial status of major projects.
6. The DCOC reviewed significant change orders.
7. The DCOC explored the right to have its own legal counsel, but chose to decline that option unless a specific need for such legal aid arises in the future.
8. The DCOC weighed in on Board of Trustees decisions on funding of and revisions to the master building plans of the District and the individual colleges.
9. The DCOC approved the Board of Trustees decision on Jan. 20th to suspend further development of the satellite projects based on student projections and financial considerations. The funding for those projects was transferred into the District contingency fund.
10. The DCOC agreed with the District's recommendation, based on a report by the Trustees Ad Hoc Committee on Assets Management, to support the development of the Firestone factory building project within a reduced scope with any remaining funds upon the completion of the project to be transferred into the contingency fund.
11. DCOC supported two Board of Trustees resolutions, one for standardized, centralized accountability controls utilizing industry best practices, the other concerning the set aside of funds allocated for deferred maintenance of buildings.
12. The DCOC has begun a study of the implications of the District's use of alternative project development and construction methods. This includes reports on cost, scheduling and selection-process comparisons between design/bid/build and design/build.
13. The DCOC announced its plans for the coming year and received the full support of the Board of Trustees.

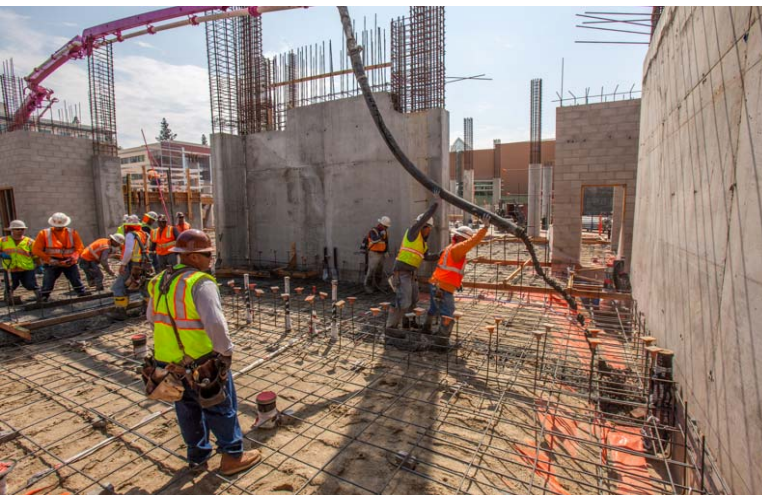
East Los Angeles College Project Highlights



THE MEN'S BASEBALL FIELD RENOVATION PROJECT INCLUDED NEW UNDERGROUND DRAINAGE, IRRIGATION SYSTEMS (FOR SYNTHETIC TURF), GRADING, INSTALLATION OF NEW SYNTHETIC BASEBALL FIELD TURF, NEW BASEBALL FIELD ELECTRICAL, A NEW LIGHTING SYSTEM, FENCING, NETTING, AND NEW BATTING CAGES. THIS PROJECT IS COMPLETED.



THE ELAC STADIUM MODERNIZATION PHASE I (EAST END ZONE TERRACE) PROJECT ADDED A 10,000 SQUARE FEET TERRACED OUTDOOR PLAZA THAT WILL ACCOMMODATE OUTDOOR SEATING CAPACITY OF 400 PEOPLE WITH BEVERAGE AND COOKING SERVICES, RESTROOMS, AND STORAGE BUILDINGS. THIS PROJECT IS COMPLETED.



THE STUDENT SUCCESS AND RETENTION CENTER WILL BUILD A NEW 135,000 SQUARE FOOT BUILDING THAT WILL HOUSE CLASSROOMS, LABS AND OFFICES FOR ENGLISH/ESL, A WRITING LAB, FOREIGN LANGUAGE, SPEECH, IT, A DATA CENTER, TLC/DISTANCE EDUCATION, LRC, NON-CREDIT, HONORS AND CHICANO STUDIES. A NEW 1.25 ACRE CAMPUS QUADRANGLE ADJACENT TO THE BUILDING ON THE NORTH SIDE OF THIS BUILDING IS ALSO INCLUDED IN THIS PROJECT. PROJECT COMPLETION IS SCHEDULED FOR LATE FALL 2014 TO EARLY WINTER 2015.

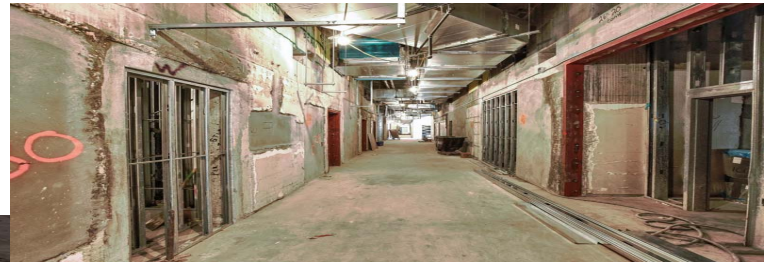
EAST LOS ANGELES COLLEGE - PROJECT LIST/ SUPPORT SERVICES

| PROJECT NAME | STATUS | BUDGET AT COMPLETION |
|---|--------------|----------------------|
| SCIENCE CAREER & MATHEMATICS BUILDING | DESIGN | \$79,751,268 |
| ACADEMIC NETWORK INTEGRATED BACKBONE | CONSTRUCTION | \$3,850,228 |
| CAMPUS MARQUEES | CONSTRUCTION | \$2,435,649 |
| CAMPUS STUDENT CENTER/BOOK STORE COMPLEX | CONSTRUCTION | \$38,015,134 |
| STUDENT SUCCESS AND RETENTION CENTER | CONSTRUCTION | \$81,182,381 |
| BULK PROCUREMENT | ONGOING | \$569 |
| CAMPUS PROJECT SUPPORT | ONGOING | \$54,316,951 |
| TRANSIT CENTER ACCESSIBILITY | ONGOING | \$815,172 |
| BAILEY LIBRARY LEARNING CENTER MODERNIZATION | COMPLETED | \$19,268,099 |
| BAUM CENTER | COMPLETED | \$24,052,442 |
| CAMPUS-WIDE INFRASTRUCTURE | COMPLETED | \$29,994,022 |
| CAMPUS-WIDE IMPROVEMENTS | COMPLETED | \$2,769,397 |
| CENTRAL PLANT AND MICROTURBINES/ TES FARM | COMPLETED | \$29,419,294 |
| CORPORATE CENTER FOR HEALTH CAREER (LAND ACQUISITION) | COMPLETED | \$13,459,468 |
| E3 & E5 REPLACEMENT BUILDING | COMPLETED | \$17,856,667 |
| ELAC STADIUM MODERNIZATION - PHASE 1 (EAST END TERRACE) | COMPLETED | \$10,354,813 |
| ENTRY PLAZA | COMPLETED | \$5,624,818 |
| FITNESS CENTER | COMPLETED | \$883,233 |
| MASTER PLANNING | COMPLETED | \$919,001 |
| MEN'S BASEBALL FIELD RENOVATION | COMPLETED | \$4,023,823 |
| PARKING STRUCTURE LOT 3 | COMPLETED | \$38,447,812 |
| PHYSICAL PLANT BUILDING | COMPLETED | \$3,805,785 |
| PARKING STRUCTURE LOT 4 /FACILITIES MAINTENANCE (NORTHEAST) | COMPLETED | \$16,849,343 |
| PE FIELDS | COMPLETED | \$5,377,085 |
| PERFORMING AND FINE ARTS COMPLEX | COMPLETED | \$94,898,996 |
| NORTHEAST PARKING RESURFACING | COMPLETED | \$475,838 |
| RWGPL | COMPLETED | \$1,945,114 |
| STUDENT SERVICES BUILDING E1 | COMPLETED | \$40,357,379 |
| TECHNOLOGY CENTER | COMPLETED | \$9,416,539 |
| HEALTH CAREERS CENTER | ON HOLD | \$25,660,709 |
| TOTAL | | \$656,227,029 |

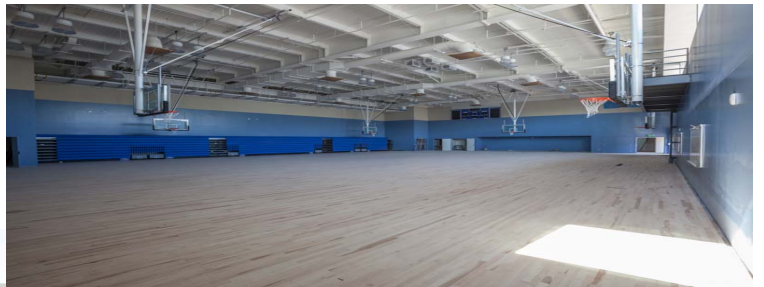
Los Angeles City College Project Highlights



THIS IS THE GREEN TECHNOLOGY STUDENT UNION BUILDING. THE BUILDING WILL HAVE 60,000 SQUARE FEET AND PROVIDE SPACE FOR THE BOOKSTORE, FOOD SERVICES, ASSOCIATED STUDENT ORGANIZATION (ASO), RECEIVING, COMPUTER LAB/STUDY AREAS, AND VARIOUS OTHER STUDENT ACTIVITIES. THE BUILDING OPENED IN FALL 2012.



THE CLAUSEN HALL MODERNIZATION PROJECT WILL CREATE A MODERN EDUCATIONAL FACILITY WITH THE CAPABILITY OF DELIVERING INSTRUCTION THROUGH DIFFERENT MEDIA. THE BUILDING IS SCHEDULED TO OPEN IN THE SPRING 2014.



THE NEW HEALTH, FITNESS, AND P.E. BUILDING WILL HAVE 40,000 SQUARE FEET AND PROVIDE SPACE FOR A BASKETBALL GYMNASIUM, MULTI-PURPOSE CLASSROOMS, JUDO LABORATORY, FITNESS CENTER, MEN'S/WOMEN'S LOCKER ROOMS, AND OUTDOOR SWIMMING POOL. THE BUILDING IS SCHEDULED TO OPEN IN THE FALL 2013.

LOS ANGELES CITY COLLEGE - PROJECT LIST/ SUPPORT SERVICES

| PROJECT NAME | STATUS | BUDGET AT COMPLETION |
|---|--------------|----------------------|
| CAMPUS-WIDE IMPROVEMENTS | PLANNING | \$6,187,412 |
| DEMOLITION OF MEN'S GYM, POOL, MAINT & MISC BUNGALOWS | PLANNING | \$364,386 |
| HOLMES HALL MODERNIZATION | PLANNING | \$8,235,500 |
| LEARNING SUPPORT CENTER | PLANNING | \$25,458,721 |
| RWGPL - CENTRAL PLANT PHASE II | PLANNING | \$4,132,475 |
| RWGPL - STREET IMPROVEMENTS | PLANNING | \$1,756,227 |
| STUDENT SERVICES CENTER | PLANNING | \$36,321,145 |
| TENNIS COURTS | DESIGN | \$630,403 |
| CESAR CHAVEZ - ADMIN BUILDING MODERNIZATION | DESIGN | \$22,815,920 |
| DA VINCI HALL MODERNIZATION | DESIGN | \$19,198,423 |
| PHYSICAL PLANT (M&O BUILDING) | DESIGN | \$8,302,953 |
| RWGPL - RED LINE PEDESTRIAN CORRIDOR | DESIGN | \$6,454,619 |
| SOUTH GYM MODERNIZATION | DESIGN | \$11,320,203 |
| ATHLETIC FIELD | CONSTRUCTION | \$4,102,384 |
| CLAUSEN HALL MODERNIZATION | CONSTRUCTION | \$19,906,601 |
| HEALTH, FITNESS, PE BUILDING | CONSTRUCTION | \$24,254,686 |
| TEMPORARY FACILITIES/3020 WILSHIRE | CONSTRUCTION | \$14,836,379 |
| BULK PROCUREMENT | ONGOING | \$1,882 |
| CAMPUS PROJECT SUPPORT | ONGOING | \$48,221,932 |
| LAND ACQUISITION - SOUTH OF MONROE STREET PROJECTS | ONGOING | \$25,449,859 |
| MASTER PLANNING | ONGOING | \$1,807,355 |
| CHEMISTRY BUILDING MODERNIZATION | COMPLETED | \$6,250,999 |
| CHILD DEVELOPMENT CENTER | COMPLETED | \$15,831,857 |
| COMMUNICATIONS BUILDING | COMPLETED | \$662,619 |
| FOOD LAB UPGRADE | COMPLETED | \$774,414 |
| FRANKLIN HALL MODERNIZATION | COMPLETED | \$24,487,389 |
| GREEN TECHNOLOGY STUDENT UNION BUILDING | COMPLETED | \$41,097,049 |
| JEFFERSON HALL MODERNIZATION | COMPLETED | \$10,715,498 |
| LIFE SCIENCES MODERNIZATION | COMPLETED | \$4,580,272 |
| MAINTENANCE FACILITIES | COMPLETED | \$535,339 |
| MLK LIBRARY - LEARNING RESOURCE CENTER | COMPLETED | \$23,448,928 |
| PARKING MITIGATION - I PASS | COMPLETED | \$539,520 |
| PARKING STRUCTURE | COMPLETED | \$52,217,149 |
| ROOFING - CHAVEZ, RADTECH, HOLMES, THEATER | COMPLETED | \$580,768 |
| RWGPL - CENTRAL PLANT | COMPLETED | \$7,395,512 |
| RWGPL - SITE UTILITIES INFRASTRUCTURE | COMPLETED | \$23,959,841 |
| SCIENCE AND TECHNOLOGY BUILDING | COMPLETED | \$43,018,155 |
| STUDENT LOUNGE | COMPLETED | \$555,553 |
| RWGPL - LANDSCAPING/HARDSCAPE IMPROVEMENTS | ON HOLD | \$19,977,131 |
| FAMILY LIFE SCIENCE | CANCELLED | \$112,331 |
| THEATER BUILDING | CANCELLED | \$38,789 |
| SCIENCE AND TECHNOLOGY II | CANCELLED | \$135,328 |
| STUDENT ADMISSIONS CENTER | CANCELLED | \$1,109,227 |
| PARKING STRUCTURE - STUDENT ADMISSIONS CENTER | CANCELLED | \$751,541 |
| CAFETERIA BUILDING | CANCELLED | \$17,054 |
| TOTAL | | \$568,551,728 |

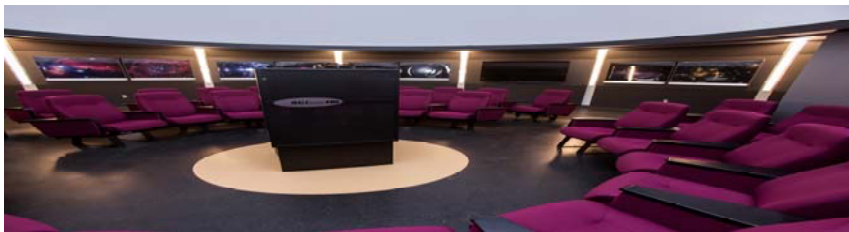
Los Angeles Harbor College Project Highlights



THE NEWLY CONSTRUCTED LEARNING RESOURCE CENTER IS 43,009 SQUARE FEET AND WILL REPLACE THE OLD LIBRARY. THE BUILDING IS SCHEDULED TO OPEN IN THE SPRING 2014.



THE NEW SCIENCE COMPLEX BUILDING IS 76,900 SQUARE FEET AND PROVIDES SPACE FOR ALL OF THE SCIENCE PROGRAMS AND ASSOCIATED EDUCATIONAL FUNCTIONS. THE BUILDING OPENED IN THE FALL 2013.



THE ASTRONOMY MODERNIZATION INCLUDED A COMPLETE REMODEL AND UPGRADE OF THE BUILDING. THE BUILDING OPENED IN SPRING 2013.

LOS ANGELES HARBOR COLLEGE - PROJECT LIST/ SUPPORT SERVICES

| PROJECT NAME | STATUS | BUDGET AT COMPLETION |
|---|--------------|----------------------|
| CAMPUS ADA | PLANNING | \$490,401 |
| NURSING MODERNIZATION (OLD ADMIN.BLDG.) | PLANNING | \$15,361,496 |
| STUDENT UNION | PLANNING | \$51,902,011 |
| INFRASTRUCTURE/LAND & HARDSCAPE/SECURITY | CONSTRUCTION | \$25,707,948 |
| MARQUEE MODERNIZATION | CONSTRUCTION | \$2,116,614 |
| NEW LEARNING RESOURCE CENTER | CONSTRUCTION | \$27,977,695 |
| SCIENCE COMPLEX | CONSTRUCTION | \$60,688,897 |
| THEATER DRAMA SPEECH BUILDING | CONSTRUCTION | \$15,782,790 |
| CAMPUS PROJECT SUPPORT | ONGOING | \$39,605,132 |
| MASTER PLANNING | ONGOING | \$2,351,064 |
| ASTRONOMY MODERNIZATION | COMPLETED | \$2,398,233 |
| BULK PROCUREMENT | COMPLETED | \$405 |
| CAMPUS IMPROVEMENTS | COMPLETED | \$2,742,503 |
| CAMPUS SOFTBALL FIELD MODERNIZATION | COMPLETED | \$203,301 |
| CAMPUS PARKING LOT RECONSTRUCTION | COMPLETED | \$9,937,909 |
| CAMPUS IMPROVEMENTS - RESTROOMS | COMPLETED | \$2,360,088 |
| CENTRAL PLANT | COMPLETED | \$11,316,697 |
| FACILITIES MANAGEMENT AND OPERATIONS HEADQUARTERS | COMPLETED | \$15,041,655 |
| FINE ARTS BUILDING | COMPLETED | \$1,610,293 |
| GENERAL CLASSROOM BUILDING | COMPLETED | \$319,449 |
| KEYLESS ENTRANCE SYSTEM | COMPLETED | \$400 |
| MUSIC BUILDING | COMPLETED | \$1,899,289 |
| NEW CHILD DEVELOPMENT CENTER | COMPLETED | \$9,742,145 |
| NORTHEAST ACADEMIC BUILDING | COMPLETED | \$31,100,072 |
| NURSING BUILDING | COMPLETED | \$2,676,024 |
| PE FACILITY | COMPLETED | \$182,511 |
| PE, WELLNESS CENTER | COMPLETED | \$20,738,434 |
| RWGPL | COMPLETED | \$3,175,138 |
| SITE UTILITIES ALLOWANCE | COMPLETED | \$9,961,267 |
| STUDENT SERVICES CENTER | COMPLETED | \$21,316,135 |
| STUDENT CAFETERIA AND SEAHAWK CENTER | COMPLETED | \$91,600 |
| TECHNOLOGY INSTRUCTION AND CLASSROOM BUILDING | COMPLETED | \$29,212,425 |
| TECHNOLOGY INSTRUCTION AND CLASSROOM BUILDING - TV STUDIO | CANCELLED | \$476,041 |
| TRACK AND FIELD | COMPLETED | \$6,243,883 |
| WEST PARKING STRUCTURE | COMPLETED | \$23,736,122 |
| COMMUNITY SERVICES MODERNIZATION | CANCELLED | \$715,954 |
| EXISTING BUILDING EXTERIOR UPGRADE - CAMPUS WIDE | CANCELLED | \$54,759 |
| TOTAL | | \$449,236,780 |

Los Angeles Mission College Project Highlights



THE NEW CENTER FOR MATH AND SCIENCE (EAST CAMPUS COMPLEX) WILL PROVIDE INSTRUCTIONAL SPACE FOR BIOLOGICAL SCIENCES, PHYSICAL SCIENCES, GEOGRAPHY, COMPUTER/TUTORING LABORATORIES, FACULTY OFFICES, AUDITORIUM AND OTHER SUPPORT AREAS. THE BUILDING OPENED FALL 2012.



THE NEW MEDIA ARTS CENTER WILL HAVE 37,204 SQUARE FEET AND WILL PROVIDE SPACE FOR PERFORMANCE THEATER, ART GALLERY, ART/PAINTING ROOMS, FACULTY OFFICES, GRAPHICS ARTS AND COMPUTER GRAPHIC ARTS EXHIBITION SPACE. THE BUILDING IS SCHEDULED TO OPEN FALL 2014.

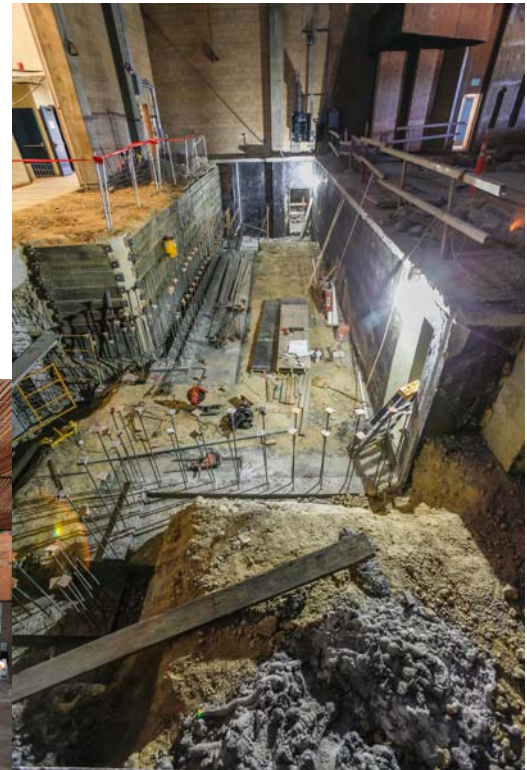
LOS ANGELES MISSION COLLEGE - PROJECT LIST/ SUPPORT SERVICES

| PROJECT NAME | STATUS | BUDGET AT COMPLETION |
|---|--------------|----------------------|
| CENTRAL ENERGY PLANT | PLANNING | \$12,913,826 |
| RWGPL - PEDESTRIAN ACCESS & STREET IMPROVEMENTS | PLANNING | \$456,638 |
| CAMPUS DEMAND SIDE MANAGEMENT | CONSTRUCTION | \$3,739,628 |
| CAMPUS MODERNIZATION PHASE 1 | CONSTRUCTION | \$22,646,137 |
| CAMPUS MODERNIZATION PHASE 2 | CONSTRUCTION | \$14,246,014 |
| MEDIA ARTS CENTER | CONSTRUCTION | \$43,346,487 |
| BULK PROCUREMENT | ONGOING | \$349 |
| CAMPUS PROJECT SUPPORT | ONGOING | \$35,145,502 |
| TRAFFIC MITIGATION | ONGOING | \$3,000,000 |
| CAMPUS CENTER | COMPLETED | \$787,681 |
| CAMPUS - WIDE IMPROVEMENTS | COMPLETED | \$737,060 |
| CAMPUS - WIDE INFRASTRUCTURE | COMPLETED | \$13,295,434 |
| CHILD DEVELOPMENT CENTER | COMPLETED | \$13,279,763 |
| EAST COMPLEX | COMPLETED | \$87,570,774 |
| FAMILY AND CONSUMERS STUDIES BUILDING | COMPLETED | \$52,756,631 |
| HEALTH AND PE, FITNESS CENTER | COMPLETED | \$49,762,758 |
| INSTRUCTIONAL BUILDING | COMPLETED | \$5,530,556 |
| INSTRUCTION STUDENT SERVICES BUILDING | COMPLETED | \$1,933,654 |
| LAND ACQUISITION - CHURCH PROPERTY | COMPLETED | \$5,684,287 |
| LAND ACQUISITION AT HUBBARD STREET | COMPLETED | \$1,373,615 |
| LAND ACQUISITION - PENTECOSTAL & SYRIAN CHURCH PROPERTIES | COMPLETED | \$9,966,183 |
| MASTER PLANNING | COMPLETED | \$4,275,491 |
| PARKING STRUCTURE A | COMPLETED | \$27,873,928 |
| RWGPL | COMPLETED | \$4,109,926 |
| SHERIFF STATION | COMPLETED | \$5,007,879 |
| TEMPORARY FACILITIES | COMPLETED | \$21,412 |
| RWGPL - EAST CAMPUS | ON HOLD | \$0 |
| STUDENT SERVICES/ADMIN BUILDING | ON HOLD | \$9,038,124 |
| ATHLETIC COMPLEX | ON HOLD | \$5,217,835 |
| LEARNING ASSISTANCE CENTER | ON HOLD | \$1,821,958 |
| PARKING STRUCTURE B | CANCELLED | \$0 |
| PLANT FACILITIES AND CENTRAL PLANT | CANCELLED | \$1,534,622 |
| TOTAL | | \$437,074,152 |

Los Angeles Pierce College Project Highlights



THE NEW LIBRARY/LEARNING CROSSROADS BUILDING WILL HAVE 104,500 SQUARE FEET AND WILL PROVIDE SPACE FOR THE COMPUTER LEARNING CENTER, A TUTORIAL LEARNING CENTER, A STAFF DEVELOPMENT TRAINING FACILITY, OPEN SPACE TO ACCOMMODATE THE STAFF, AND A FOOD COURT AREA. THE BUILDING OPENED SPRING 2013.



THE THEATER BUILDING (PERFORMING ARTS) RENOVATION PROJECT INCLUDES THE RESTROOMS, PROVIDES HVAC ALTERATIONS, NEW FLOORING, PAINTING, WINDOW TREATMENTS, STAGE IMPROVEMENTS, NEW BOX OFFICE, ADDITIONAL STORAGE, NEW ORCHESTRA SHELL, AND UPDATES THE LOBBY AREA. PROJECT COMPLETION IS SCHEDULED FOR SPRING 2014.

PIERCE COLLEGE - PROJECT LIST/ SUPPORT SERVICES

| PROJECT NAME | STATUS | BUDGET AT COMPLETION |
|--|--------------|----------------------|
| SUSTAINABLE LANDSCAPE & CAMPUS ACCESSIBILITY COMPLIANCE - DeSOTO & MASON ENTRANCES | PLANNING | \$4,691,985 |
| SUSTAINABLE LANDSCAPE AND CAMPUS ACCESSIBILITY COMPLIANCE - SLE - SOUTH OF MALL | PLANNING | \$6,499,703 |
| CAMPUS-WIDE INFRASTRUCTURE PHASE III | DESIGN | \$5,723,204 |
| STUDENT LEARNING ENVIRONMENTS (SLE) - CLASSROOM MODERNIZATION & TECHNOLOGY UPGRADE SOUTH | DESIGN | \$8,366,073 |
| ADMINISTRATION BUILDING RENOVATION | CONSTRUCTION | \$9,022,772 |
| BEHAVIORAL SCIENCE, SOCIAL SCIENCE, MATHEMATICS, & ENGLISH BUILDINGS RENOVATION | CONSTRUCTION | \$11,784,863 |
| CAMPUS CENTER RENOVATION | CONSTRUCTION | \$4,705,097 |
| CAMPUS-WIDE INFRASTRUCTURE PHASE II | CONSTRUCTION | \$1,809,579 |
| COMPUTER SCIENCE AND COMPUTER LEARNING RENOVATION | CONSTRUCTION | \$8,200,770 |
| LIFE SCIENCE, CHEMISTRY, PHYSICS BUILDING RENOVATION | CONSTRUCTION | \$15,782,710 |
| PARKING LOTS AND ROADWAYS PHASE V | CONSTRUCTION | \$3,951,407 |
| RENOVATION OF AGRICULTURAL FACILITIES | CONSTRUCTION | \$4,675,200 |
| STADIUM ADA IMPROVEMENTS | CONSTRUCTION | \$14,243,225 |
| STUDENT LEARNING ENVIRONMENTS (SLE) - CLASSROOM MODERNIZATION & TECHNOLOGY UPGRADE NORTH | CONSTRUCTION | \$11,750,310 |
| SUSTAINABLE LANDSCAPE AND CAMPUS ACCESSIBILITY COMPLIANCE | CONSTRUCTION | \$11,814,118 |
| THEATER/PERFORMING ARTS BUILDING RENOVATION | CONSTRUCTION | \$16,175,981 |
| BULK PROCUREMENT | ONGOING | \$550 |
| CAMPUS PROJECT SUPPORT | ONGOING | \$47,742,714 |
| LAND ACQUISITION - AGOURA PROPERTY | ONGOING | \$4,474 |
| MASTER PLANNING | ONGOING | \$2,413,104 |
| ANIMAL SCIENCE FACILITIES | COMPLETED | \$2,550,456 |
| BUSINESS EDUCATION RENOVATION | COMPLETED | \$2,965,416 |
| CAMPUS SHERIFF STATION | COMPLETED | \$598,343 |
| CAMPUS-WIDE INFRASTRUCTURE PHASE I | COMPLETED | \$33,114,578 |
| CAMPUS-WIDE IMPROVEMENTS - PARKING LOTS PHASE I | COMPLETED | \$9,433,493 |
| CAMPUS-WIDE IMPROVEMENTS - ROADWAYS PHASE I | COMPLETED | \$9,056,188 |
| CENTRAL PLANT | COMPLETED | \$8,376,640 |
| CENTER FOR THE SCIENCES | COMPLETED | \$63,477,250 |
| CHILD DEVELOPMENT CENTER | COMPLETED | \$14,059,407 |
| COLLEGE - INITIATIVES | COMPLETED | \$483,826 |
| EXHIBITION AND EVENTS CENTER | COMPLETED | \$7,587,981 |
| EXISTING LIBRARY RENOVATION | COMPLETED | \$408,521 |
| FACULTY OFFICES RENOVATION | COMPLETED | \$3,762,237 |
| FINE ART AND MUSIC RENOVATION | COMPLETED | \$4,217,473 |
| LANDSCAPE AND SITE MASTER PLAN | COMPLETED | \$10,588,749 |
| NEW LIBRARY/LEARNING CROSSROADS BUILDING | COMPLETED | \$50,090,219 |
| NEW MAINTENANCE AND OPERATIONS FACILITY | COMPLETED | \$17,393,441 |
| OLD BOOK STORE RENOVATION | COMPLETED | \$3,240,319 |
| PARKING LOTS AND ROADWAYS PHASE II | COMPLETED | \$3,441,793 |
| P.E. FACILITIES | COMPLETED | \$24,491,712 |
| PHOTOVOLTAIC ARRAYS FOR PARKING LOTS 1 AND 8 | COMPLETED | \$10,439,170 |
| STUDENT SERVICES BUILDING | COMPLETED | \$23,441,749 |
| STUDENT STORE AND FINANCIAL AID BUILDING | COMPLETED | \$8,561,679 |
| TEMPORARY FACILITIES - RELOCATION, ACQUISITION (PIERCE VILLAGE) | COMPLETED | \$12,773,464 |
| AGRICULTURAL EDUCATION CENTER | ON HOLD | \$7,839,310 |
| DIGITAL ARTS AND MEDIA BUILDING | ON HOLD | \$48,595,462 |
| EXPANDED AUTOMOTIVE AND NEW TECHNICAL EDUCATION FACILITIES | ON HOLD | \$31,735,804 |
| GREEN TECHNOLOGIES BUILDING | ON HOLD | \$2,225,004 |
| HORTICULTURE FACILITIES | ON HOLD | \$19,891,002 |
| PARKING LOTS AND ROADWAYS PHASE III | ON HOLD | \$3,088,111 |
| PARKING LOTS AND ROADWAYS PHASE IV | ON HOLD | \$2,328,589 |
| WEST CENTRAL PLANT | ON HOLD | \$5,500,508 |
| LIFE SCIENCE AND NATURAL RESOURCES MANAGEMENT | CANCELLED | \$6,556 |
| TECHNOLOGY CENTER | CANCELLED | \$1,272,266 |
| TOTAL | | \$636,394,555 |

Los Angeles Southwest College Project Highlights



Phase I (Administration Annex)



Phase III (Bldg Modernization)



Phase III (Bldg Modernization)

THE COX BUILDING PHASE I (ADMINISTRATION ANNEX) AND PHASE III (BUILDING MODERNIZATION) PROJECT WILL MODERNIZE THE FIVE STORY BUILDING AND ADD OFFICE SPACE TO THE BUILDING. PROJECT COMPLETION IS SCHEDULED FOR FALL 2014.

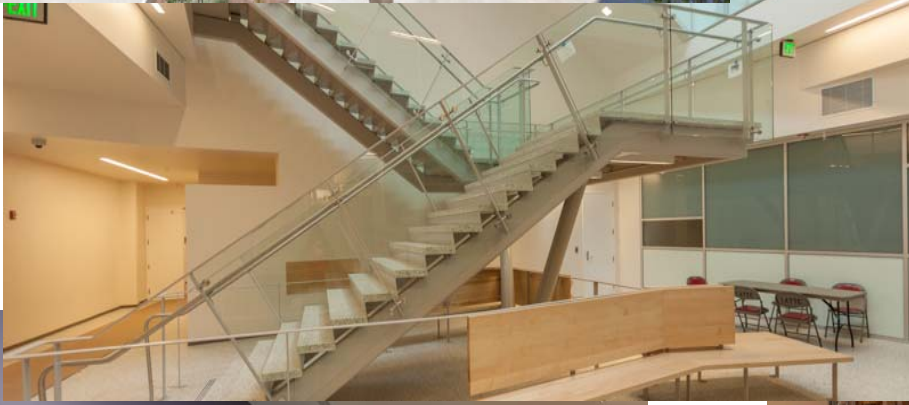


THE NEW SCHOOL OF CAREER & TECHNICAL EDUCATION WILL HOUSE THE SCHOOL OF BUSINESS, WORKFORCE DEVELOPMENT, AND CORPORATE RELATIONS. THERE WILL ALSO BE A NEW CAREER RESOURCE CENTER, A NEW ENVIRONMENTAL AND TECHNOLOGY SCIENCE PROGRAM, A STUDENT SUCCESS CENTER AND SHARED SUPPORT SPACE FUNCTIONS. PROJECT COMPLETION IS SCHEDULED FOR FALL 2014.

LOS ANGELES SOUTHWEST COLLEGE - PROJECT LIST/ SUPPORT SERVICES

| PROJECT NAME | STATUS | BUDGET AT COMPLETION |
|--|--------------|----------------------|
| CAMPUS WIDE HARDSCAPE & LANDSCAPE IMPROVEMENTS AND FIRE ACCESS | NOT STARTED | \$118,462 |
| SCHOOL OF ENGLISH & FOREIGN LANGUAGES MODERNIZATION | NOT STARTED | \$13,880,357 |
| CAMPUS WIDE INFRASTRUCTURE UPGRADES - PHASE II | PLANNING | \$10,989,875 |
| CAMPUS WIDE SECURITY UPGRADES | PLANNING | \$2,101,081 |
| CAMPUS WIDE TECHNOLOGY UPGRADES - PHASE II | PLANNING | \$2,729,488 |
| COX BUILDING - PHASE II (LITTLE THEATER UPGRADE) | CONSTRUCTION | \$13,567,848 |
| COX BUILDING - PHASE III (BUILDING MODERNIZATION) | CONSTRUCTION | \$43,039,023 |
| FITNESS AND WELLNESS CENTER | CONSTRUCTION | \$17,855,350 |
| SCHOOL OF CAREER & TECHNICAL EDUCATION | CONSTRUCTION | \$33,743,754 |
| BULK PROCUREMENT | ONGOING | \$349 |
| CAMPUS PROJECT SUPPORT | ONGOING | \$35,302,806 |
| LAND ACQUISITION - CAMPUS CORNER SIGN | ONGOING | \$1,703,836 |
| MASTER PLANNING | ONGOING | \$2,364,630 |
| ATHLETIC FIELD HOUSE, STADIUM | COMPLETED | \$21,773,357 |
| CAMPUS CORNER SIGN | COMPLETED | \$876,711 |
| CAMPUS-WIDE IMPROVEMENTS | COMPLETED | \$1,296,446 |
| CAMPUS WIDE INFRASTRUCTURE UPGRADES - PHASE I | COMPLETED | \$8,458,448 |
| CAMPUS WIDE TECHNOLOGY UPGRADES - PHASE I | COMPLETED | \$2,228,486 |
| CENTRAL PLANT | COMPLETED | \$14,293,306 |
| CHILD DEVELOPMENT CENTER | COMPLETED | \$20,405,865 |
| COX BUILDING - PHASE I (ADMINISTRATION ANNEX) | COMPLETED | \$2,411,288 |
| DESIGN BUILD - EAST AND WEST SIDES | COMPLETED | \$3,648,935 |
| MAINTENANCE AND OPERATION FACILITY | COMPLETED | \$13,484,676 |
| NORTHEAST QUADRANT PARKING STRUCTURE | COMPLETED | \$15,056,712 |
| PE FIELDS | COMPLETED | \$1,146,141 |
| RWGPL | COMPLETED | \$11,778,762 |
| SCHOOL OF BEHAVIORAL AND SOCIAL SCIENCES | COMPLETED | \$22,136,403 |
| STUDENT SERVICES ACTIVITIES CENTER | COMPLETED | \$29,643,111 |
| WEST ENTRY DRIVE AND PARKING LOT FACILITIES | COMPLETED | \$14,390,887 |
| SCHOOL OF ARTS AND HUMANITIES | ON HOLD | \$6,064,209 |
| SCHOOL OF MATH & SCIENCES (LECTURE LAB) | ON HOLD | \$42,293,453 |
| HEALTH ACADEMY BUILDING | CANCELLED | \$0 |
| RENEWABLE ENERGY | CANCELLED | \$1,934 |
| TOTAL | | \$408,785,989 |

Los Angeles Trade-Tech College Project Highlights



THE LEARNING ASSISTANCE CENTER RENOVATION PROJECT REPLACES THE BUILDING ENVELOPE, RENOVATES THE INTERIORS AND RECONSTRUCTS THE BASEMENT. THIS BUILDING OPENED IN FALL 2013.

LOS ANGELES TRADE-TECH COLLEGE - PROJECT LIST/ SUPPORT SERVICES

| PROJECT NAME | STATUS | BUDGET AT COMPLETION |
|--|--------------|----------------------|
| CAMPUS-WIDE IMPROVEMENTS - NORTH QUAD | PLANNING | \$8,730,422 |
| CAMPUS-WIDE INFRASTRUCTURE - MAIN ELECTRICAL DISTRIBUTION SYSTEM | PLANNING | \$10,287,570 |
| RWGPL - BLUE LINE STATION EXTENSION | PLANNING | \$1,578,639 |
| RWGPL - GRAND AVENUE ENHANCEMENT | PLANNING | \$2,010,422 |
| PERFORMING ARTS CENTER | DESIGN | \$11,583,232 |
| SOUTH CAMPUS | DESIGN | \$101,260,091 |
| CAMPUS-WIDE IMPROVEMENTS - PHASE I | CONSTRUCTION | \$22,379,273 |
| CAMPUS-WIDE IMPROVEMENTS - PHASE III | CONSTRUCTION | \$8,456,675 |
| CONSTRUCTION TRADES CENTER | CONSTRUCTION | \$82,424,589 |
| EAST PARKING STRUCTURE | CONSTRUCTION | \$23,664,295 |
| BULK PROCUREMENT | ONGOING | \$461 |
| CAMPUS PROJECT SUPPORT | ONGOING | \$46,070,537 |
| MASTER PLANNING | ONGOING | \$1,578,177 |
| AUTO, METAL BUILDING | COMPLETED | \$6,097,922 |
| BUILDING C | COMPLETED | \$54,858 |
| BUILDING E | COMPLETED | \$450,009 |
| CAMPUS-WIDE IMPROVEMENTS - PHASE II | COMPLETED | \$5,321,581 |
| CAMPUS-WIDE INFRASTRUCTURE - EMERGENCY LIGHTING, FIRE ALARM AND SECURITY SYSTEMS | COMPLETED | \$1,706,692 |
| CHILD DEVELOPMENT CENTER | COMPLETED | \$11,548,391 |
| CONSTRUCTION TECHNOLOGY BUILDING | COMPLETED | \$1,976,068 |
| DEMAND SIDE ENERGY OPTIMIZATION | COMPLETED | \$57,212 |
| FASHION AND FINE ARTS BUILDING - PHASE I | COMPLETED | \$4,925,699 |
| GYMNASIUM | COMPLETED | \$1,572,816 |
| LAND ACQUISITION - EAST CAMPUS | COMPLETED | \$33,500,515 |
| LAND ACQUISITION - SOUTH CAMPUS | COMPLETED | \$18,826,872 |
| LEARNING RESOURCES CENTER | COMPLETED | \$38,875,647 |
| LIBERAL ARTS BUILDING | COMPLETED | \$68,290,974 |
| MATH AND SCIENCE BUILDING | COMPLETED | \$2,124,126 |
| OLIVE STREET PARKING | COMPLETED | \$13,403,996 |
| RWGPL - F RAMP | COMPLETED | \$4,395,725 |
| TRANSPORTATION AND ACCESSIBILITY IMPROVEMENTS | COMPLETED | \$167,744 |
| ART AND CULINARY ARTS BUILDING | ON HOLD | \$46,503,737 |
| FASHION AND FINE ARTS BUILDING - PHASE II | ON HOLD | \$1,764,035 |
| RE-GROUT AND SEAL TILES IN RESTROOMS | ON HOLD | \$4,955 |
| SOUTH CAMPUS ATHLETIC FIELD | ON HOLD | \$145,209 |
| WELLNESS CENTER | ON HOLD | \$114,754 |
| TOTAL | | \$581,853,920 |

Los Angeles Valley College Project Highlights



THE NEW LIBRARY/LEARNING ASSISTANCE CENTER HAS 93,000 SQUARE FEET AND WILL PROVIDE A COMPUTER LEARNING CENTER, A TUTORIAL LEARNING CENTER, A STAFF DEVELOPMENT TRAINING FACILITY, AND OFFICE SPACE TO ACCOMMODATE THE STAFF. THE NEW LIBRARY OPENED IN THE FALL OF 2012.

LOS ANGELES VALLEY COLLEGE - PROJECT LIST/ SUPPORT SERVICES

| PROJECT NAME | STATUS | BUDGET AT COMPLETION |
|--|--------------|----------------------|
| CAMPUS CENTER BUILDING - PHASE II | PLANNING | \$5,456,432 |
| CAMPUS INFRASTRUCTURE - ENERGY INFRASTRUCTURE AND SECURITY SYSTEM IMPROVEMENTS | PLANNING | \$6,678,018 |
| CAMPUS-WIDE IMPROVEMENTS - EMERGENCY LIGHTING, FIRE ALARM AND SECURITY SYSTEM | PLANNING | \$1,807,416 |
| NEW PLANETARIUM EXPANSION | PLANNING | \$5,225,037 |
| PARKING LOTS/INTERNAL ROADS | PLANNING | \$8,086,472 |
| RWGPL PHASE II | PLANNING | \$4,893,603 |
| SUSTAINABLE MALL | PLANNING | \$3,403,809 |
| ATHLETIC TRAINING FACILITY-BASEBALL STADIUM BLEACHER | DESIGN | \$29,786,770 |
| COMMUNITY WORKFORCE DEVELOPMENT CENTER/NEW ADMINISTRATION | DESIGN | \$43,187,992 |
| GYM PHASE II | DESIGN | \$1,000,000 |
| MONARCH CENTER (STUDENT UNION) | DESIGN | \$36,206,846 |
| PARKING STRUCTURE | DESIGN | \$20,421,652 |
| CAMPUS-WIDE IMPROVEMENTS - UPGRADE | CONSTRUCTION | \$5,519,974 |
| MULTI-PURPOSE COMMUNITY SERVICES CENTER | CONSTRUCTION | \$20,909,146 |
| BULK PROCUREMENT | ONGOING | \$546 |
| CAMPUS PROJECT SUPPORT | ONGOING | \$55,585,639 |
| MASTER PLANNING | ONGOING | \$11,050,821 |
| ADMIN BUILDING | COMPLETED | \$478,827 |
| ALLIED HEALTH AND SCIENCES CENTER | COMPLETED | \$71,645,968 |
| ART BUILDING | COMPLETED | \$2,414,495 |
| BEHAVIORAL SCIENCE BUILDING | COMPLETED | \$965,444 |
| BUSINESS JOURNALISM BUILDING | COMPLETED | \$1,919,667 |
| CAMPUS CENTER BUILDING - PHASE I | COMPLETED | \$1,010,538 |
| CAMPUS IMPROVEMENT - CENTRAL PLANT/UTILITIES INFRASTRUCTURE | COMPLETED | \$26,711,739 |
| CAMPUS IMPROVEMENT - IT DEPARTMENT | COMPLETED | \$4,476,712 |
| CAMPUS-WIDE RESTROOMS | COMPLETED | \$2,593,793 |
| CHILD DEVELOPMENT CENTER | COMPLETED | \$16,749,457 |
| ENGINEERING BUILDING | COMPLETED | \$1,709,142 |
| FAMILY RESOURCE CENTER | COMPLETED | \$1,754,739 |
| FIELD HOUSE | COMPLETED | \$8,182,037 |
| FOREIGN LANGUAGE BUILDING | COMPLETED | \$1,165,326 |
| GYM BUILDING PHASE I | COMPLETED | \$22,000,977 |
| HUMANITIES BUILDING | COMPLETED | \$1,756,393 |
| LIBRARY AND LEARNING RESOURCE CENTER | COMPLETED | \$38,881,698 |
| LIFE SCIENCES BUILDING | COMPLETED | \$1,631,316 |
| MAINTENANCE AND OPERATIONS, SHERIFF STATION | COMPLETED | \$8,789,003 |
| MATH AND SCIENCE BUILDING | COMPLETED | \$1,558,124 |
| MOTION PICTURE BUILDING | COMPLETED | \$3,607,059 |
| MTA BUS STATION EXTENSION | COMPLETED | \$2,877,002 |
| MUSIC BUILDING | COMPLETED | \$1,962,449 |
| PLANETARIUM BUILDING MODERNIZATION | COMPLETED | \$2,480,993 |
| RWGPL PHASE I | COMPLETED | \$9,528,080 |
| STUDENT SERVICE CENTER | COMPLETED | \$27,305,193 |
| THEATRE ARTS BUILDING | COMPLETED | \$3,215,026 |
| MEDIA AND PERFORMING ARTS CENTER | ON HOLD | \$86,217,609 |
| BUSINESS RENOVATION (FOR ENV CTR/AHS/EMS) | CANCELLED | \$0 |
| LAND ACQUISITION - PANORAMA CITY EDUCATION | CANCELLED | \$0 |
| TEMPORARY FACILITIES | NOT IN USE | \$0 |
| TOTAL | | \$612,808,978 |

West Los Angeles College Project Highlights



Parking Structure—Lot 8



Student Services Building



Science and Math Complex



General Classroom

UNDER THE BOND PROGRAM, THE COLLEGE HAS COMPLETED THE FOUR NEW BUILDINGS SHOWN ABOVE. THE PARKING STRUCTURE LOT 8 (302,689 SF) HAS 988 VEHICLE SPACES. THE STUDENT SERVICE BUILDING (50,470 SF) HOUSES ADMINISTRATIVE SERVICE, A BOOKSTORE AND FOOD SERVICES. THE SCIENCE AND MATH BUILDING (86,925 SF) INCLUDES LECTURE AND DEPARTMENTAL AREAS. THE GENERAL CLASSROOM BUILDING (44,604 SF) HAS CLASSROOM AND OFFICE SPACE.

WEST LOS ANGELES COLLEGE - PROJECT LIST/ SUPPORT SERVICES

| PROJECT NAME | STATUS | BUDGET AT COMPLETION |
|---|-----------|----------------------|
| CAMPUS IMPROVEMENTS - STREET IMPROVEMENTS FIRE SERVICE ROAD | DESIGN | \$1,430,920 |
| CAMPUS WIDE INFRASTRUCTURE IMPROVEMENTS | DESIGN | \$8,103,904 |
| CENTRAL PLANT PHASE 1 & 2 | DESIGN | \$13,263,907 |
| RWGPL - LANDSCAPE/HARDSCAPE | DESIGN | \$9,290,969 |
| BULK PROCUREMENT | ONGOING | \$355 |
| CAMPUS PROJECT SUPPORT | ONGOING | \$36,968,001 |
| LAND ACQUISITION - 10100 PROPERTY | ONGOING | \$47,594,818 |
| MASTER PLANNING | ONGOING | \$8,945,683 |
| CAMPUS IMPROVEMENTS - ATHLETIC COMPLEX | COMPLETED | \$8,136,648 |
| CAMPUS IMPROVEMENTS - INFRASTRUCTURE BUS ROUTE TURN AROUND | COMPLETED | \$620,894 |
| CAMPUS IMPROVEMENTS - SIGNAGE FOR SAFETY AND PUBLIC INFORMATION | COMPLETED | \$761,829 |
| COLLEGE BOULEVARD - SECOND ACCESS ROAD | COMPLETED | \$14,750,214 |
| GENERAL CLASSROOM | COMPLETED | \$27,194,595 |
| HELDMAN LEARNING RESOURCE CENTER | COMPLETED | \$8,679,981 |
| PARKING STRUCTURE - LOT 8 | COMPLETED | \$27,853,206 |
| SCIENCE AND MATH BUILDING | COMPLETED | \$66,041,823 |
| STUDENT SERVICES BUILDING | COMPLETED | \$36,231,949 |
| CAMPUS ENTRY SIGNAGE | ON HOLD | \$656,504 |
| CAREER EDUCATION | ON HOLD | \$8,171,465 |
| PHYSICAL EDUCATION & DANCE | ON HOLD | \$2,186,783 |
| PLANT FACILITIES CENTER - FMO | ON HOLD | \$2,592,537 |
| TECHNOLOGY LEARNING CENTER | ON HOLD | \$34,517,530 |
| WATSON CENTER | ON HOLD | \$14,978,761 |
| ALLIED HEALTH AND WELLNESS | CANCELLED | \$16,568,960 |
| NORTH PARKING STRUCTURE AND PV FARM | CANCELLED | \$10,638,330 |
| TOTAL | | \$406,180,566 |

Satellites and Multicampus

SATELLITE AND MULTI-CAMPUS - SUMMARY

| PROJECT NAME | STATUS | BUDGET AT COMPLETION |
|--|------------|----------------------|
| DISTRICT 770 HQ | CONTINGENT | \$52,106,066 |
| ELAC FIRESTONE FACTORY BUILDING | DESIGN | \$196,123,251 |
| LACCD VAN DE KAMP INNOVATION CAMPUS | COMPLETED | \$92,883,881 |
| HEALTH CAREERS ACADEMY AT COUNTY GENERAL | ON HOLD | \$755,652 |
| MISSION COLLEGE - SUNLAND/TUJUNGA | ON HOLD | \$24,737 |
| VALLEY COLLEGE - BURBANK | ON HOLD | \$0 |
| WEST COLLEGE - LAX | ON HOLD | \$109,302 |
| SOUTHWEST MUSEUM | CANCELLED | \$0 |
| TOTAL | | \$342,002,890 |

College Project Central Services

COLLEGE PROJECT CENTRAL SERVICES - PROGRAM HOLDING/SUSPENSE ACCOUNT

| PROJECT NAME | BUDGET AT COMPLETION |
|----------------------------------|----------------------|
| PROGRAM HOLDING/SUSPENSE ACCOUNT | \$2,979,346 |
| TOTAL | \$2,979,346 |

COLLEGE PROJECT CENTRAL SERVICES - OWNER CONTROLLED INSURANCE PROGRAM (OCIP)

| PROJECT NAME | BUDGET AT COMPLETION |
|-------------------------------|----------------------|
| OCIP - CITY | \$6,027,143 |
| OCIP - EAST | \$10,293,390 |
| OCIP - HARBOR | \$7,124,346 |
| OCIP - MISSION | \$7,031,195 |
| OCIP - PIERCE | \$10,276,565 |
| OCIP - SOUTHWEST | \$6,868,855 |
| OCIP - TRADE | \$8,374,330 |
| OCIP - VALLEY | \$6,633,087 |
| OCIP - WEST | \$5,892,557 |
| OCIP - DISTRICT 770 HQ | \$2,239 |
| OCIP - ADA COMPLIANCE | \$2,018,218 |
| OCIP - ESCROW DEPOSIT | \$10,916,471 |
| OCIP - HEALTH CAREERS ACADEMY | \$481,426 |
| OCIP - SOUTHGATE | \$3,466,775 |
| OCIP - STORM WATER | \$767,432 |
| OCIP - PROP A/AA | \$0 |
| TOTAL | \$86,174,029 |

College Project Central Services

COLLEGE PROJECT CENTRAL SERVICES - RECYCLING

| Project Name | Budget at Completion |
|-----------------------|----------------------|
| RECYCLING - CITY | \$821,035 |
| RECYCLING - EAST | \$1,033,584 |
| RECYCLING - HARBOR | \$678,816 |
| RECYCLING - MISSION | \$613,861 |
| RECYCLING - PIERCE | \$845,556 |
| RECYCLING - SOUTHWEST | \$784,796 |
| RECYCLING - TRADE | \$747,195 |
| RECYCLING - VALLEY | \$858,432 |
| RECYCLING - WEST | \$1,315,303 |
| RECYCLING - SOUTHGATE | \$48,102 |
| Total | \$7,746,679 |

COLLEGE PROJECT CENTRAL SERVICES - FURNITURE, FIXTURES AND EQUIPMENT (FF&E)

| Project Name | Budget at Completion |
|--------------------------|----------------------|
| FF & E - CITY | \$5,951,238 |
| FF & E - EAST | \$8,942,900 |
| FF & E - HARBOR | \$3,382,152 |
| FF & E - MISSION | \$4,056,639 |
| FF & E - PIERCE | \$7,503,904 |
| FF & E - SOUTHWEST | \$3,485,146 |
| FF & E - TRADE | \$4,955,324 |
| FF & E - VALLEY | \$4,497,176 |
| FF & E - WEST | \$4,578,361 |
| FF & E - DISTRICT 770 HQ | \$158,099 |
| FF & E - SOUTHGATE | \$3,300,395 |
| Total | \$50,811,334 |

COLLEGE PROJECT CENTRAL SERVICES - LEGAL

| Project Name | Budget at Completion |
|--------------------------------|----------------------|
| LEGAL - CITY | \$2,886,052 |
| LEGAL - EAST | \$4,511,731 |
| LEGAL - HARBOR | \$1,950,422 |
| LEGAL - MISSION | \$2,245,121 |
| LEGAL - PIERCE | \$3,253,622 |
| LEGAL - SOUTHWEST | \$2,004,596 |
| LEGAL - TRADE | \$2,518,615 |
| LEGAL - VALLEY | \$2,443,803 |
| LEGAL - WEST | \$1,882,628 |
| LEGAL - ADA COMPLIANCE | \$371,474 |
| LEGAL - ANTI-GRAFFITI | \$45,592 |
| LEGAL - HEALTH CAREERS ACADEMY | \$123,757 |
| LEGAL - VAN DE KAMP | \$588,127 |
| LEGAL - SOUTHGATE | \$383,583 |
| LEGAL - STORM WATER | \$197,215 |
| LEGAL - WARRANTY PROGRAM | \$75,706 |
| LEGAL - WHOLE BUILDING | \$54,151 |
| Total | \$25,536,195 |

COLLEGE PROJECT CENTRAL SERVICES - ASSET MANAGEMENT

| PROJECT NAME | BUDGET AT COMPLETION |
|---|----------------------|
| ASSET MGMT - CITY | \$3,258,699 |
| ASSET MGMT - EAST | \$4,785,363 |
| ASSET MGMT - HARBOR | \$1,441,182 |
| ASSET MGMT - MISSION | \$2,042,464 |
| ASSET MGMT - PIERCE | \$3,817,840 |
| ASSET MGMT - SOUTHWEST | \$2,565,735 |
| ASSET MGMT - TRADE | \$2,515,780 |
| ASSET MGMT - VALLEY | \$2,383,057 |
| ASSET MGMT - WEST | \$2,297,256 |
| ASSET MGMT - DISTRICT 770 HQ | \$3,000,000 |
| ASSET MGMT - SOUTHGATE | \$1,794,430 |
| SAP COMPUTERIZED MAINTENANCE MANAGEMENT SYSTEM | \$9,594,000 |
| PVJOBS - OUTREACH FOR SMALL LOCAL AND EMERGING, PLA, INTERNSHIPS, AND APPRENTICESHIPS | \$37,000,000 |
| TOTAL | \$76,495,805 |

COLLEGE PROJECT CENTRAL SERVICES - MOVE MANAGEMENT

| PROJECT NAME | BUDGET AT COMPLETION |
|-----------------------|----------------------|
| MOVE MGMT - CITY | \$7,267,486 |
| MOVE MGMT - EAST | \$10,638,021 |
| MOVE MGMT - HARBOR | \$3,203,797 |
| MOVE MGMT - MISSION | \$4,540,466 |
| MOVE MGMT - PIERCE | \$8,617,804 |
| MOVE MGMT - SOUTHWEST | \$3,924,441 |
| MOVE MGMT - TRADE | \$5,798,039 |
| MOVE MGMT - VALLEY | \$5,297,614 |
| MOVE MGMT - WEST | \$5,106,876 |
| MOVE MGMT - SOUTHGATE | \$3,989,079 |
| TOTAL | \$58,383,623 |

COLLEGE PROJECT CENTRAL SERVICES - PROGRAM MANAGEMENT

| PROJECT NAME | BUDGET AT COMPLETION |
|---------------------------------------|----------------------|
| PROGRAM MGMT - CITY | \$21,513,944 |
| PROGRAM MGMT - EAST | \$19,354,428 |
| PROGRAM MGMT - HARBOR | \$15,592,384 |
| PROGRAM MGMT - MISSION | \$15,353,747 |
| PROGRAM MGMT - PIERCE | \$24,391,939 |
| PROGRAM MGMT - SOUTHWEST | \$15,568,366 |
| PROGRAM MGMT - TRADE | \$21,799,112 |
| PROGRAM MGMT - VALLEY | \$21,052,938 |
| PROGRAM MGMT - WEST | \$15,647,381 |
| PROGRAM MGMT - ANTI-GRAFFITI | \$0 |
| PROGRAM MGMT - ENERGY | \$0 |
| PROGRAM MGMT - HEALTH CAREERS ACADEMY | \$0 |
| PROGRAM MGMT - SOUTHGATE | \$7,806,757 |
| PROGRAM MGMT - STORM WATER | \$0 |
| PROGRAM MGMT - WHOLE BUILDING | \$0 |
| PROGRAM MGMT - ADA COMPLIANCE | \$0 |
| PROGRAM MGMT - WARRANTY PROGRAM | \$0 |
| TOTAL | \$178,080,996 |

COLLEGE PROJECT CENTRAL SERVICES - PROJECT MANAGEMENT

| PROJECT NAME | BUDGET AT COMPLETION |
|--------------------------|----------------------|
| PROJECT MGMT - CITY | \$37,378 |
| PROJECT MGMT - EAST | \$41,553 |
| PROJECT MGMT - HARBOR | \$27,059 |
| PROJECT MGMT - MISSION | \$423,198 |
| PROJECT MGMT - PIERCE | \$115,777 |
| PROJECT MGMT - SOUTHWEST | \$63,514 |
| PROJECT MGMT - TRADE | \$37,888 |
| PROJECT MGMT - VALLEY | \$36,573 |
| PROJECT MGMT - WEST | \$564,921 |
| PROJECT MGMT - SOUTHGATE | \$19,909 |
| TOTAL | \$1,367,770 |

COLLEGE PROJECT CENTRAL SERVICES - AUDIT

| PROJECT NAME | BUDGET AT COMPLETION |
|--------------------------------|----------------------|
| AUDIT - CITY | \$1,157,355 |
| AUDIT - EAST | \$1,506,888 |
| AUDIT - HARBOR | \$982,273 |
| AUDIT - MISSION | \$998,036 |
| AUDIT - PIERCE | \$1,491,318 |
| AUDIT - SOUTHWEST | \$942,280 |
| AUDIT - TRADE | \$1,331,767 |
| AUDIT - VALLEY | \$1,326,161 |
| AUDIT - WEST | \$940,857 |
| AUDIT - HEALTH CAREERS ACADEMY | \$60,641 |
| AUDIT - STORM WATER | \$96,134 |
| AUDIT - ANTI-GRAFFITI | \$23,321 |
| AUDIT - ADA COMPLIANCE | \$252,827 |
| AUDIT - SOUTHGATE | \$450,291 |
| AUDIT - WARRANTY PROGRAM | \$39,374 |
| AUDIT - WHOLE BUILDING | \$41,019 |
| TOTAL | \$11,640,542 |

COLLEGE PROJECT CENTRAL SERVICES - SPECIALTY CONSULTING

| PROJECT NAME | BUDGET AT COMPLETION |
|----------------------------------|----------------------|
| SPECIALTY CONSULTING - CITY | \$6,528,884 |
| SPECIALTY CONSULTING - EAST | \$5,784,009 |
| SPECIALTY CONSULTING - HARBOR | \$4,534,428 |
| SPECIALTY CONSULTING - MISSION | \$4,369,458 |
| SPECIALTY CONSULTING - PIERCE | \$6,166,241 |
| SPECIALTY CONSULTING - SOUTHWEST | \$4,241,097 |
| SPECIALTY CONSULTING - TRADE | \$6,529,189 |
| SPECIALTY CONSULTING - VALLEY | \$6,337,612 |
| SPECIALTY CONSULTING - WEST | \$3,662,652 |
| SPECIALTY CONSULTING - SOUTHGATE | \$2,199,581 |
| TOTAL | \$50,353,151 |

Districtwide Initiatives

DISTRICTWIDE INITIATIVES - ENERGY

| PROJECT NAME | BUDGET AT COMPLETION |
|--|----------------------|
| RENEWABLE ENERGY - CITY | \$7,189,213 |
| RENEWABLE ENERGY - EAST | \$10,197,629 |
| RENEWABLE ENERGY - HARBOR | \$30,895,417 |
| RENEWABLE ENERGY - MISSION | \$7,047,929 |
| RENEWABLE ENERGY - PIERCE | \$19,407,163 |
| RENEWABLE ENERGY - SOUTHWEST | \$8,785,029 |
| RENEWABLE ENERGY - TRADE | \$13,627,431 |
| RENEWABLE ENERGY - VALLEY | \$7,310,490 |
| RENEWABLE ENERGY - WEST | \$5,349,283 |
| RENEWABLE ENERGY - SOUTHGATE | \$1,823,155 |
| RENEWABLE ENERGY - VAN DE KEMP | \$3,083,347 |
| RENEWABLE ENERGY - 770 HQ | \$20,079 |
| RENEWABLE ENERGY - DISTRICTWIDE | \$3,131,342 |
| RENEWABLE ENERGY - MEASUREMENT AND DEMAND RESPONSE | \$10,043,380 |
| RENEWABLE ENERGY - OWNER'S RESERVE | \$4,078,673 |
| TOTAL | \$131,989,560 |

DISTRICTWIDE INITIATIVES - TRANSPORTATION AND ACCESSIBILITY IMPROVEMENTS

| PROJECT NAME | BUDGET AT COMPLETION |
|--|----------------------|
| ACCESSIBILITY IMPROVEMENTS - CITY | \$3,903,704 |
| ACCESSIBILITY IMPROVEMENTS - EAST | \$14,059,345 |
| ACCESSIBILITY IMPROVEMENTS - HARBOR | \$3,878,914 |
| ACCESSIBILITY IMPROVEMENTS - MISSION | \$4,255,899 |
| ACCESSIBILITY IMPROVEMENTS - PIERCE | \$6,157,574 |
| ACCESSIBILITY IMPROVEMENTS - SOUTHWEST | \$1,912,150 |
| ACCESSIBILITY IMPROVEMENTS - TRADE | \$9,015,298 |
| ACCESSIBILITY IMPROVEMENTS - VALLEY | \$13,268,150 |
| ACCESSIBILITY IMPROVEMENTS - WEST | \$7,684,723 |
| ACCESSIBILITY IMPROVEMENTS - SOUTHGATE | \$101,727 |
| ACCESSIBILITY IMPROVEMENTS - VAN DE KAMP | \$1,478 |
| ACCESSIBILITY IMPROVEMENTS - DISTRICT 770 HQ | \$45,460 |
| ACCESSIBILITY IMPROVEMENTS - OWNER'S RESERVE | \$4,694,448 |
| TOTAL | \$68,978,870 |

DISTRICTWIDE INITIATIVES - TECHNOLOGY

| PROJECT NAME | BUDGET AT COMPLETION |
|--|----------------------|
| STUDENT INFORMATION SYSTEM (SIS) | \$43,249,454 |
| CONNECT LACCD NETWORK | \$27,500,000 |
| SERVERS & SUPPORT EQUIPMENT | 20,444,989 |
| ONE CARD SYSTEM (PHYSICAL SECURITY) AND MONITORING | \$6,000,000 |
| FACILITY MANAGEMENT (CMMS) AND BUILDING MANAGEMENT INTERFACE | \$13,481,580 |
| DISTANCE EDUCATION COLLABORATION | \$10,000 |
| MEDIA LAB ENHANCEMENT | \$10,000 |
| STANDARDS, PROCESS MAPPING AND PROGRAM STRATEGY/MANAGEMENT | \$8,731,964 |
| PROJECT SUPPORT | \$338,964 |
| TECHNOLOGY COORDINATORS | \$7,515,243 |
| TOTAL | \$127,282,194 |

DISTRICTWIDE INITIATIVES - ANTI-GRAFFITI PROGRAM

| PROJECT NAME | BUDGET AT COMPLETION |
|---|----------------------|
| ANTI-GRAFFITI PROGRAM - CITY | \$72,173 |
| ANTI-GRAFFITI PROGRAM - EAST | \$212,723 |
| ANTI-GRAFFITI PROGRAM - HARBOR | \$218,514 |
| ANTI-GRAFFITI PROGRAM - MISSION | \$51,508 |
| ANTI-GRAFFITI PROGRAM - PIERCE | \$107,258 |
| ANTI-GRAFFITI PROGRAM - SOUTHWEST | \$134,406 |
| ANTI-GRAFFITI PROGRAM - TRADE | \$162,046 |
| ANTI-GRAFFITI PROGRAM - VALLEY | \$70,621 |
| ANTI-GRAFFITI PROGRAM - WEST | \$80,009 |
| ANTI-GRAFFITI PROGRAM - SOUTHGATE | \$35,807 |
| ANTI-GRAFFITI PROGRAM - OWNER'S RESERVE | \$0 |
| TOTAL | \$1,145,065 |

DISTRICTWIDE INITIATIVES - WARRANTY PROGRAM

| PROJECT NAME | BUDGET AT COMPLETION |
|------------------------------------|----------------------|
| WARRANTY PROGRAM - CITY | \$659,520 |
| WARRANTY PROGRAM - EAST | \$735,956 |
| WARRANTY PROGRAM - HARBOR | \$477,431 |
| WARRANTY PROGRAM - MISSION | \$470,605 |
| WARRANTY PROGRAM - PIERCE | \$747,747 |
| WARRANTY PROGRAM - SOUTHWEST | \$471,743 |
| WARRANTY PROGRAM - TRADE | \$1,109,921 |
| WARRANTY PROGRAM - VALLEY | \$645,298 |
| WARRANTY PROGRAM - WEST | \$468,899 |
| WARRANTY PROGRAM - SOUTHGATE | \$326,686 |
| WARRANTY PROGRAM - VAN DE KEMP | \$19,548 |
| WARRANTY PROGRAM - OWNER'S RESERVE | \$0 |
| TOTAL | \$6,133,354 |

DISTRICTWIDE INITIATIVES - WHOLE BUILDING

| PROJECT NAME | BUDGET AT COMPLETION |
|----------------------------------|----------------------|
| WHOLE BUILDING - CITY | \$1,281,852 |
| WHOLE BUILDING - EAST | \$1,424,739 |
| WHOLE BUILDING - HARBOR | \$927,973 |
| WHOLE BUILDING - MISSION | \$1,361,089 |
| WHOLE BUILDING - PIERCE | \$1,453,460 |
| WHOLE BUILDING - SOUTHWEST | \$916,814 |
| WHOLE BUILDING - TRADE | \$1,298,805 |
| WHOLE BUILDING - VALLEY | \$1,254,236 |
| WHOLE BUILDING - WEST | \$911,403 |
| WHOLE BUILDING - SOUTHGATE | \$635,232 |
| WHOLE BUILDING - VAN DE KAMP | \$27,470 |
| WHOLE BUILDING - OWNER'S RESERVE | \$0 |
| TOTAL | \$11,493,073 |

DISTRICTWIDE INITIATIVES - STORM WATER

| PROJECT NAME | STATUS | BUDGET AT COMPLETION |
|-------------------------------|--------------|----------------------|
| STORM WATER - CITY | PLANNING | \$172,761 |
| STORM WATER - EAST | DESIGN | \$2,962,914 |
| STORM WATER - HARBOR | PLANNING | \$609,893 |
| STORM WATER - MISSION | DESIGN | \$1,861,732 |
| STORM WATER - PIERCE | PLANNING | \$244,266 |
| STORM WATER - SOUTHWEST | CONSTRUCTION | \$1,702,902 |
| STORM WATER - TRADE | PLANNING | \$3,334,408 |
| STORM WATER - VALLEY | PLANNING | \$2,186,003 |
| STORM WATER - WEST | DESIGN | \$2,666,295 |
| STORM WATER - SOUTHGATE | PLANNING | \$5,953 |
| STORM WATER - VAN DE KAMP | PLANNING | \$276 |
| STORM WATER - OWNER'S RESERVE | N/A | \$7,246,978 |
| TOTAL | | \$22,994,381 |



ACRONYMS AND ABBREVIATIONS

ADA: Americans with Disabilities Act

ASO: Associated Student Organization

CMMS: Computerized Maintenance Managing System

CPM: Construction Project Manager

DCOC: District Citizen's Oversight Committee

DSP&S: Disabled Student Program and Services

Env Ctr/ AHS/EMS: Environmental Center/Allied Health and Science/Energy Management System

EOPS: Extended Opportunities Program and Services

ESL: English as Second Language

FF&E: Furniture, Fixtures and Equipment

FMO: Facilities, Maintenance and Operations

HQ: Headquarters

HVAC: Heating, Ventilation and Air Conditioning

IT: Information Technology

LACCD: Los Angeles Community College District

LAUSD: Los Angeles Unified School District

LEED: Leadership in Energy and Environmental Design

MGMT: Management

OCIP: Owner Controlled Insurance Program

OIG: Office of Inspector General

PE: Physical Education

PLA: Project Labor Agreement

PM: Program Manager

PV: Photovoltaic

RWGPL: Roadway, Walkway, Grounds, Parking Lots

SAP: Systems, Applications, and Products in Data Processing

SF: Square Feet



SIS: Student Information System

SLE: Student Learning Environment

Specialty Consulting: Located in the “College Projects Central Services” list, this line item includes prevailing wage labor compliance program costs, small business bond assistance program costs, real estate consulting costs, construction documentation services, district wide design standards preparation, sustainability measurement, etc.

TES: Thermal Energy Storage

Colleges:

ELAC: East Los Angeles College

LACCD: Los Angeles Community College District

LACC: Los Angeles City College

LAHC: Los Angeles Harbor College

LAMC: Los Angeles Mission College

LAVC: Los Angeles Valley College

LAPC: Los Angeles Pierce College

LASC: Los Angeles Southwest College

LATTC: Los Angeles Trade Tech College

WLAC: West Los Angeles College

