



DISTRICT CITIZENS' OVERSIGHT COMMITTEE

PROPOSITIONS A/AA & MEASURE J

2014 -2015 ANNUAL REPORT



OUR COLLEGES:

EAST LOS ANGELES COLLEGE (ELAC)

LOS ANGELES CITY COLLEGE (LACC)

LOS ANGELES HARBOR COLLEGE (LAHC)

LOS ANGELES MISSION COLLEGE (LAMC)

LOS ANGELES SOUTHWEST COLLEGE (LASC)

LOS ANGELES TRADE-TECH COLLEGE (LATTCC)

LOS ANGELES PIERCE COLLEGE (LAPC)

LOS ANGELES VALLEY COLLEGE (LAVC)

WEST LOS ANGELES COLLEGE (WLAC)

Website: www.buildlaccd.org/oversight

To the Los Angeles Community College District Community and those it serves:

Fulfilling its obligation to the Los Angeles Community College District, its building program and the taxpayers of L.A. County, the District Citizens' Oversight Committee submits this report on the status of the bond program at the conclusion of the 2014-15 fiscal year. It has again been a productive year of construction, renovation, upgrading and the furnishing of structures at LACCD's nine colleges and its satellite campuses. We hope this report will be reviewed by all who have an interest in this monumental endeavor, from users and administrators to staff, faculty, the student body and, of course, the taxpayers, a majority of whom have generously approved funding for these projects over the last 14 years through bond propositions A, AA, and measure J. Without your support, this program would not exist.

Most of the Proposition A and AA bond funds have now been expended and the projects built with those funds are in their final stages of closeout. The Measure J bond projects are well underway with a majority of the funds committed and several of the projects either completed and in the closeout phase or currently under construction.

In April, 2013, the LACCD Board of Trustees approved a program management contract with AECOM. With the second year of the agreement now completed, the improved project controls are well established with key metrics in place to measure the ongoing performance of the bond program. Several audits have been performed over the past year and they show that the improved controls are effective.

In the past year, 25 projects (seven at L.A. City College, six at West L.A. College, three at Harbor College, three at East Los Angeles College, four at Trade Tech College, one at Southwest College and one at Pierce College) have been completed. More information on these projects can be found in the dashboard reports on the www.buildlaccd.org website.

The excellence of the building program has been recognized in the past year by three organizations that bestowed prestigious awards on bond projects, including a national honor. The Design-Build Institute of America's National Design-Build Award for Educational Facilities went to Los Angeles Mission College's Center for Math and Science. At the Los Angeles Architectural Awards, hosted by the Los Angeles Business Council, the Education Award went to Los Angeles City College's Student Union. One of the San Fernando Valley Business Journal's Commercial Real Estate Awards, the Best Public Project, went to Los Angeles Valley College's Library and Academic Resource Center.

Last year, the DCOC began holding its meetings at LACCD's colleges. This policy continued this year,

enabling our committee members to inspect every LACCD campus. During these visits, we observed many students using the newly constructed or newly renovated buildings. This has enabled us to better gauge the progress of the many ongoing projects in their various stages of development.

Our volunteer committee will proudly continue fulfilling our mission of keeping all concerned parties apprised of the status of the bond program.

Drawing on the experience of our members in both the construction industry and educational facilities, we monitor all aspects of the program including master plan revisions, significant change orders, construction schedules and financial matters, offering our expertise and advice should any concerns arise.

The DCOC consists of three regional members, representing the nine LACCD colleges, along with representatives from business, labor, LACCD's foundations, taxpayers, the student body and seniors plus a member of the community at large. All DCOC members are required to disclose their financial interests in order to avoid the perception of any conflict of interest. The full committee meets at least quarterly with additional meetings on specific issues held by ad-hoc committees, who, in turn, make recommendations to the full committee. Information about the bond program is supplied to the DCOC through interaction with the LACCD Board of Trustees, the Chancellor's office and District staff members, along with personnel at the various campuses through supplemental reports. The DCOC also regularly reviews bond program and performance audits. All DCOC meetings are recorded and posted on www.buildlaccd.org along with minutes of all the meetings.

Being chairman of the DCOC has proven to be a gratifying experience, but it is a position in which I could not be successful without the effort and support of my fellow committee members. I have so much admiration for them and for those who served in previous years, working so hard to make the DCOC the efficient and effective group it has become, a committee that can give the public confidence that taxpayer dollars are being spent wisely, honoring the intent of the voters to provide a collegiate environment that supports and promotes student success. I am also thankful for all those in the District who have given us the support we need to do our job.

We must never forget that the ultimate mission for all of us connected to the program is to serve our students.

Daniel Swartz, Chairperson, DCOC



TABLE OF CONTENTS

About the District.....	5
Our Members.....	6
DCOC Meeting Schedule & LACCD Board of Trustees.....	6
District Bond Program Facts.....	7-8
East Los Angeles College (ELAC) Project Highlights.....	9
ELAC Project List.....	10
Los Angeles City College (LACC) Project Highlights.....	11
LACC Project List.....	12
Los Angeles Harbor College (LAHC) Project Highlights.....	13
LAHC Project List.....	14
Los Angeles Mission College (LAMC) Project Highlights.....	15
LAMC Project List.....	16
Los Angeles Pierce College (LAPC) Project Highlights.....	17
LAPC Project List.....	18-19
Los Angeles Southwest College (LASC) Project Highlights.....	20
LASC Project List.....	21
Los Angeles Trade-Tech College (LATTTC) Project Highlights.....	22
LATTTC Project List.....	23
Los Angeles Valley College (LAVC) Project Highlights.....	24
LAVC Project List.....	25-26
West Los Angeles College (WLAC) Project Highlights.....	27
WLAC Project List.....	28
Satellites and Multicampus Project List.....	29
College Project Central Services Project List.....	30-32
Districtwide Initiatives Project List.....	32-34
Acronyms & Abbreviations.....	35-36

ABOUT THE DISTRICT

Over the past seventy-seven years the Los Angeles Community College District (LACCD) has served as the educational institution to more than three million students. Affordable, accessible and practical, the LACCD offers opportunity to all. The doors are wide open for a diverse student population eager for skills, knowledge and upward mobility. LACCD educates almost three times as many Latino students and nearly four times as many African-American students as all of the University of California campuses combined. Eighty percent of LACCD

students are from underserved populations. The LACCD serves approximately 250,000 students a year in 36 cities across an area of 882 square miles. LACCD is, by many measures, the largest community college district in the United States. The LACCD is composed of nine comprehensive colleges and a central office, which together employ roughly 4,400 full-time and part-time faculty, and more than 5,400 full-time and part-time administrative and support staff, including about 1,800 part-time student workers. An elected, seven-member Board of Trustees, serving four-year terms, governs the LACCD. One student trustee, selected by the students, serves a one-year term beginning on June 1st of every year.

Propositions A/AA and Measure J - District Citizens' Oversight Committee:

The Board of Trustees for the Los Angeles Community College District formed the District Citizens' Oversight Committee (DCOC) in June 2001 to provide a vital link between the District and the community with respect to implementation of Proposition A funds for construction and modernization projects within the District. The Proposition A bond measure totaled \$1.245 billion. The voters subsequently approved two additional bonds: Proposition AA and Measure J. Proposition AA bond measure totaled \$980 million and Measure J bond measure totaled \$3.5 billion. The DCOC consists of representatives from the local communities. The DCOC members are appointed for a two year term and can be re-appointed for a term not to exceed two consecutive terms.

Report Covers Fiscal Year 2014-15

This is the DCOC's formal annual report on bond money generated by Propositions A, AA and Measure J, consistent with the requirements of Proposition 39.

DCOC Establishment, Purpose and Responsibilities

As provided in Education Code section 15278, the District's Citizens' Oversight Committee was established by the Board of Trustees to inform the public concerning the District's expenditure of revenues received from the sale of bonds authorized by the voters on April 10, 2001, May 20, 2003 and November 4, 2008.

The District Citizens' Oversight Committee will provide oversight ensuring that:

- a. bond revenues are expended only for the construction, rehabilitation, or replacement of college facilities, including the furnishing and equipping of college facilities, or the acquisition or lease of real property for college facilities; and
- b. no bond revenues are expended for any teacher or administrative salaries or other college operating expenses.



Highlight

On December 2014 the Standard and Poor's rating services upgraded the District's bond rating from "AA" to "AA+", which results in savings to taxpayers due to reduced borrowing costs.

OUR MEMBERS

Members:

Daniel Swartz, Chair, *Taxpayer Representative*, Principle, Quadrangle Development Company
Richard Slawson, Vice-Chair, *Senior Representative*, Executive Secretary, Los Angeles/Orange Counties Building & Construction Trades Council (Retired)
Lanny Nelms, *College Representative*, Principal, Harbor Community Adult School (Retired)
David Morin, *College Representative*, Chair of Mathematics Department, East Los Angeles College (Former)
Donna "Obie" Slamon, *College Representative*, Chair, Los Angeles Pierce College Citizens' Oversight Committee
Dr. Elliot Axelband, *At-Large Representative*, Senior Engineer, RAND Corporation
David Rattray, *Business Representative*, Sr. Vice President of Education & Workforce Development, Los Angeles Chamber of Commerce
David Gomez, *Labor Representative*, Business Development Associate, IBEW/NECA (International Brotherhood of Electrical Workers/National Electrical Contractors Association)
Dr. J. Eric Bubbers, *Foundation Representative*, Vice President, Los Angeles Valley College Foundation Board of Directors
Michael J. Griggs, *Student Representative*, Student Trustee, Los Angeles Community College District

DCOC Regular Meetings

All meetings are open to the public, recorded and documented by minutes. The schedule for 2015-16 is:

August 14, 2015, 12pm-2pm - ESC

October 9 2015, 12pm-2pm - LATTTC

December 11, 2015, 12pm-2pm - Location TBD

February 26, 2016 12pm-2pm - Location TBD

April 29, 2016 12pm-2pm - Location TBD

June 10, 2016 12pm-2pm - Location TBD

Please check the website for schedule/location changes:

www.buildlaccd.org/oversight

Los Angeles Community College District

Board of Trustees:

- ◆ Scott Svonkin, President (Seat No. 5)
- ◆ Mike Eng, Vice President (Seat No. 2)
- ◆ Mike Fong (Seat No. 7)
- ◆ Andra Hoffman (Seat No. 1)
- ◆ Sydney K. Kamlager (Seat No. 3)
- ◆ Ernest H. Moreno (Seat No. 4)
- ◆ Nancy Pearlman (Seat No. 6)
- ◆ Gerson Liahut-Sanchez, Interim Student Trustee

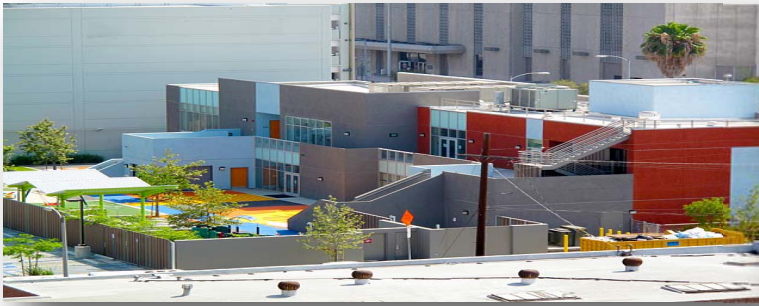
Chancellor:

- ◆ Dr. Francisco C. Rodriguez

DCOC Contact Information

Lillian Mazariegos
Telephone: (213) 891-2081
Email: mazarild@email.laccd.edu

Los Angeles Community College District
District Citizens' Oversight Committee
770 Wilshire Boulevard, 9th Floor
Los Angeles, CA 90017



DISTRICT BOND PROGRAM FACTS

BUDGET OVERVIEW

Total: **\$6,264,846,864***

Contracted: **\$5,140,392,752**

Expended: **\$4,566,611,519**

Program Reserve: **\$140,000,000**

* Amount reflects three bond issues, state and federal funding, interest and other sources

STATUS OF PROJECTS

222 Projects are Complete

41 In Construction

31 Projects in Design

46 Projects are in Planning

61 Projects not Started

DISTRICT BOND PROGRAM AUDITS, REPORTS AND LACCD RESPONSES

The following were completed and presented to the DCOC:

- Bond Performance Audit — Fiscal Year Ended June 30, 2014
<http://www.buildlaccd.org/oversight/reviews-and-audits>
- Bond Financial Audit — Fiscal Year Ended June 30, 2014
<http://www.buildlaccd.org/oversight/reviews-and-audits>
- LACCD Building Program Schedule
<http://www.buildlaccd.org/docs/default-source/DCOC-Agendas-and-Minutes/5.29.15/laccd-building-program---5-29-15.pdf>

The reports can be found at: www.buildlaccd.org/oversight/reviews-and-audits.

DISTRICT BOND PROGRAM FACTS

66 Leadership in Energy & Environmental Design (LEED) Projects:

43 LEED Building Certified*

- ◆ 3 Platinum
- ◆ 20 Gold
- ◆ 12 Silver
- ◆ 8 Certified

1 LEED Gold Certified Campus

25 LEED Ongoing LEED Projects

- ◆ 7 Projects in Programming
- ◆ 1 Projects in Design
- ◆ 17 LEED Building in Construction

*Projects may include more than one building.



LAHC - Library Resource Center



LAVC - Allied Health & Science Center



LACC - Science & Technology Building



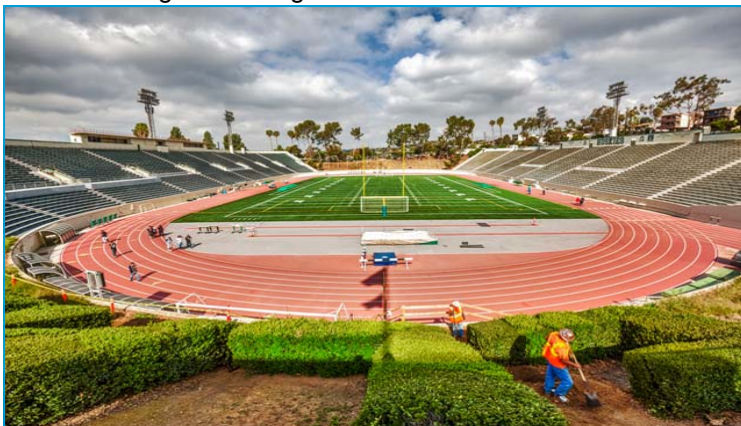
LASC - School of Career & Technical Education

EAST LOS ANGELES COLLEGE PROJECT HIGHLIGHTS

Each year, ELAC helps more than 1,000 of its students transfer to the University of California and California State University systems. Forty-seven percent of its students are focused on transferring to a 4-year school while 18 percent are working toward career preparedness. The college's 80-acre campus is located 10 miles east of downtown Los Angeles in suburban Monterey Park.



East Los Angeles College



ELAC Stadium Modernization - Phase 1(East End Terrace)



E3 E5 Replacement



EAST LOS ANGELES COLLEGE - PROJECT LIST/ SUPPORT SERVICES

Project/Building Name	Status	Budget at completion
Science Career & Mathematics Building	Planning	\$94,502,072
Academic Network Integrated Backbone	Construction	\$3,730,219
Campus Student Center/Book Store Complex	Construction	\$40,523,804
Student Success and Retention Center	Construction	\$85,474,832
Transit Center Accessibility	Ongoing	\$978,841
Campus Project Support	Ongoing	\$56,760,926
Bulk Procurement	Ongoing	\$569
Parking Structure Lot 3	Completed	\$38,488,822
Physical Plant Building	Completed	\$3,863,974
Parking Structure Lot 4/Facilities Maintenance (Northeast)	Completed	\$16,752,471
Fitness Center	Completed	\$807,739
Performing and Fine Arts Complex	Completed	\$100,586,405
PE Fields	Completed	\$5,377,585
Bailey Library Learning Center Modernization	Completed	\$19,277,979
Baum Center	Completed	\$24,130,975
ELAC Stadium Modernization - Phase 1 (East End Terrace)	Completed	\$10,380,410
Student Services Building E1	Completed	\$40,319,304
Technology Center	Completed	\$9,417,289
Central Plant and Microturbines/TES Farm	Completed	\$29,317,322
Northeast Parking Resurfacing	Completed	\$475,838
E3 & E5 Replacement Building	Completed	\$17,821,456
Men's Baseball Field Renovation	Completed	\$3,299,887
Campus Marquees	Completed	\$2,315,814
Master Planning	Completed	\$919,001
Campus-Wide Infrastructure	Completed	\$29,639,170
RWGPL	Completed	\$1,945,114
Entry Plaza	Completed	\$8,997,657
Campus-Wide Improvements	Completed	\$2,770,906
Corporate Center for Health Career (Land Acquisition)	Completed	\$13,459,468
Health Careers Center	On Hold	\$2,486,528
Total		\$664,822,377

LOS ANGELES CITY COLLEGE PROJECT HIGHLIGHTS

The 78-year-old campus is located on 49 acres in the heart of Los Angeles. The college is enhancing its campus with a new, advanced technology learning facility, increased parking, and expanded athletic/fitness and child development centers. LACC's math and debate teams are nationally recognized and its theater and cinema-television programs are among the best in the country.



Los Angeles City College



Child Development Center



Clausen Hall



LOS ANGELES CITY COLLEGE - PROJECT LIST/ SUPPORT SERVICES

Project Name	Status	Budget at Completion
Cafeteria Building	Not Started	\$907,318
Demolition of Men's Gym, Pool, Maint & Misc Bungalows	Planning	\$1,317,256
RWGPL - Central Plant Phase II	Planning	\$7,179,874
RWGPL - Street Improvements	Planning	\$1,548,290
Campus-Wide Improvements	Planning	\$8,024,737
RWGPL - Landscaping/Hardscape Improvements	Planning	\$8,635,997
Cesar Chavez - Admin Building Modernization	Design	\$34,707,939
Da Vinci Hall Modernization	Design	\$25,380,762
South Gym Modernization	Design	\$1,836,299
RWGPL - Red Line Pedestrian Corridor	Construction	\$8,471,879
Holmes Hall Modernization	Construction	\$13,009,791
Student Services Center	Construction	\$42,582,045
Temporary Facilities/3020 Wilshire	Construction	\$14,791,909
Physical Plant (M&O Building)	Construction	\$9,064,289
Tennis Courts	Construction	\$1,254,465
Land Acquisition - South of Monroe Street Projects	Ongoing	\$25,446,434
Master Planning	Ongoing	\$1,733,309
Campus Project Support	Ongoing	\$45,697,699
Bulk Procurement	Ongoing	\$1,882
Clausen Hall Modernization	Completed	\$25,498,176
Maintenance Facilities	Completed	\$535,339
Franklin Hall Modernization	Completed	\$24,497,389
Jefferson Hall Modernization	Completed	\$10,790,050
Health, Fitness, PE Building	Completed	\$27,872,586
Parking Structure	Completed	\$52,213,250
Athletic Field	Completed	\$4,115,906
Child Development Center	Completed	\$15,807,229
MLK Library - Learning Resource Center	Completed	\$23,430,724
Communications Building	Completed	\$611,606
Roofing - Chavez, RadTech, Holmes, Theater	Completed	\$580,768
Student Lounge	Completed	\$555,705
Parking Mitigation - I Pass	Completed	\$539,520
Food Lab Upgrade	Completed	\$775,645
Green Technology Student Union Building	Completed	\$41,022,904
Chemistry Building Modernization	Completed	\$7,447,552
Life Sciences Modernization	Completed	\$4,546,973
RWGPL - Site Utilities Infrastructure	Completed	\$23,959,841
RWGPL - Central Plant	Completed	\$7,395,012
Learning Support Center	Cancelled	\$410,607
Family Life Science	Cancelled	\$112,331
Student Admissions Center	Cancelled	\$1,109,227
Parking Structure - Student Admissions Center	Cancelled	\$751,541
Theater Building	Cancelled	\$38,789
Science and Technology II	Cancelled	\$135,328

Total		\$526,346,172
--------------	--	----------------------

LOS ANGELES HARBOR COLLEGE PROJECT HIGHLIGHTS

Los Angeles Harbor College has offered educational opportunities for harbor-area residents for over 60 years. The college's student body reflects the cultural and ethnic diversity in the cities it serves: Carson, Harbor City, Gardena, Lomita, San Pedro, Wilmington and the Palos Verdes Peninsula.



Los Angeles Harbor College



Child Development Center



Science Complex



LOS ANGELES HARBOR COLLEGE - PROJECT LIST/ SUPPORT SERVICES

Project Name	Status	Budget at completion
Old Administration Modernization	Design	\$10,906,262
Campus ADA	Design	\$1,140,278
Student Union	Construction	\$59,166,714
Theater Drama Speech Building	Construction	\$17,200,876
Infrastructure/Land & Hardscape/Security	Construction	\$22,220,959
Marquee Modernization	Construction	\$2,152,964
Master Planning	Ongoing	\$2,351,064
Campus Project Support	Ongoing	\$38,390,209
Bulk Procurement	Ongoing	\$405
Fine Arts Building	Completed	\$1,608,952
Student Cafeteria and Seahawk Center	Completed	\$91,600
PE Facility	Completed	\$182,511
Technology Instruction and Classroom Building	Completed	\$29,526,002
Facilities Management and Operations Headquarters	Completed	\$15,037,402
Student Services Center	Completed	\$21,272,030
Northeast Academic Building	Completed	\$30,868,711
PE, Wellness Center	Completed	\$20,599,819
Track and Field	Completed	\$6,244,432
Nursing Building	Completed	\$3,242,556
Music Building	Completed	\$1,899,289
General Classroom Building	Completed	\$319,449
Site Utilities Allowance	Completed	\$9,961,267
Central Plant	Completed	\$11,316,697
New Child Development Center	Completed	\$9,739,021
Science Complex	Completed	\$59,826,892
New Learning Resource Center	Completed	\$27,956,007
Astronomy Modernization	Completed	\$2,359,546
Keyless Entrance System	Completed	\$400
Campus Softball Field Modernization	Completed	\$203,301
Campus Parking Lot Reconstruction	Completed	\$9,903,171
West Parking Structure	Completed	\$23,712,603
Campus Improvements - Restrooms	Completed	\$2,338,382
RWGPL	Completed	\$3,175,138
Campus Improvements	Completed	\$2,738,571
SPS / Health Center	Cancelled	\$342,050
Community Services Modernization	Cancelled	\$710,453
Technology Instruction and Classroom Building - TV Studio	Cancelled	\$476,041
Existing Building Exterior Upgrade - Campus Wide	Cancelled	\$54,759
Total		\$449,236,783

LOS ANGELES MISSION COLLEGE PROJECT HIGHLIGHTS

Founded in 1975, Los Angeles Mission College is the youngest of LACCD's nine colleges. On its 22-acre campus in Sylmar, Mission College offers accessible, affordable, high-quality educational opportunities in a culturally and intellectually supportive environment.



Los Angeles Mission College - Main Campus



Los Angeles Mission College - East Campus



Health and P.E., Fitness Center



Family and Consumer Studies Building



LOS ANGELES MISSION COLLEGE - PROJECT LIST/ SUPPORT SERVICES

Project Name	Status	Budget at completion
RWGPL - Pedestrian Access & Street Improvements	Not Started	\$456,638
Central Energy Plant	Planning	\$14,651,886
Campus Modernization Phase 2	Design	\$14,522,138
Campus Demand Side Management	Design	\$5,095,785
Media Arts Center	Construction	\$40,012,488
Campus Modernization Phase 1	Construction	\$23,182,107
Student Services/Admin Building	Construction	\$9,390,251
Master Planning	Ongoing	\$4,446,772
Traffic Mitigation	Ongoing	\$3,000,001
Campus Project Support	Ongoing	\$36,834,442
Bulk Procurement	Ongoing	\$349
Learning Assistance Center	Completed	\$1,824,291
Parking Structure A	Completed	\$27,874,649
Health and PE, Fitness Center	Completed	\$49,837,741
Family and Consumers Studies Building	Completed	\$52,471,214
Instruction Student Services Building	Completed	\$1,933,654
Campus Center	Completed	\$787,681
Child Development Center	Completed	\$13,282,036
Instructional Building	Completed	\$5,526,536
East Complex	Completed	\$86,592,039
Sheriff Station	Completed	\$5,007,878
Campus-Wide Infrastructure	Completed	\$13,295,433
RWGPL	Completed	\$4,038,636
Temporary Facilities	Completed	\$21,412
Campus-Wide Improvements	Completed	\$749,150
Land Acquisition - Church Property	Completed	\$5,684,287
Land Acquisition - Pentecostal & Syrian Church Properties	Completed	\$10,079,183
Land Acquisition - Hubbard Street	Completed	\$1,340,000
Athletic Complex	Cancelled	\$5,210,778
Plant Facilities and Central Plant	Cancelled	\$1,534,622
Total		\$438,684,077

LOS ANGELES PIERCE COLLEGE PROJECT HIGHLIGHTS

Pierce College sits on 426 acres in the western San Fernando Valley. Each semester about 22,000 students are served in a diverse and dynamic mix of career, technical, transfer, workforce education and general interest programs. The school's comprehensive curriculum includes exceptional science, technology and nursing departments.



Los Angeles Pierce College



Student Services Building



New Library/Learning Crossroads Building



LOS ANGELES PIERCE COLLEGE - PROJECT LIST/ SUPPORT SERVICES

Project/Building Name	Status	Budget at completion
Agricultural Education Center	Not Started	\$4,773,253
Horticulture Facilities	Planning	\$7,826,899
Green Technologies Building	Planning	\$981,715
Digital Arts and Media Building	Planning	\$32,951,174
Student Learning Environments (SLE) - Classroom Modernization & Technology Upgrade South	Planning	\$9,617,509
Expanded Automotive and New Technical Education Facilities	Planning	\$27,871,111
Sustainable Landscape and Campus Accessibility Compliance - DeSoto and Mason Entrances	Planning	\$5,944,389
Sustainable Landscape and Campus Accessibility Compliance - SLE - South of Mall	Planning	\$2,377,927
Parking Lots and Roadways Phase III	Planning	\$4,951,296
West Central Plant	Planning	\$6,300,791
Campus-Wide Infrastructure Phase III	Design	\$2,519,891
Life Science, Chemistry, Physics Building Renovation	Construction	\$21,005,961
Administration Building Renovation	Construction	\$11,719,332
Computer Science And Computer Learning Renovation	Construction	\$10,398,954
Behavioral Science, Social Science, Mathematics, and English Buildings Renovation	Construction	\$12,847,218
Theater/Performing Arts Building Renovation	Construction	\$17,915,120
Campus Center Renovation	Construction	\$6,513,347
Student Learning Environments (SLE) - Classroom Modernization & Technology Upgrade North	Construction	\$9,617,509
Stadium ADA Improvements	Construction	\$15,306,123
Renovation of Agricultural Facilities	Construction	\$6,036,564
Sustainable Landscape and Campus Accessibility Compliance	Construction	\$8,801,847
Parking Lots and Roadways Phase IV	Construction	\$2,531,338
Parking Lots and Roadways Phase V	Construction	\$3,688,255
Campus-Wide Infrastructure Phase II	Construction	\$4,636,969
Land Acquisition - Agoura Property	Ongoing	\$4,474
Campus Project Support	Ongoing	\$56,092,856
Bulk Procurement	Ongoing	\$550
Center for the Sciences	Completed	\$63,763,523
Student Store and Financial Aid Building	Completed	\$8,561,526
Existing Library Renovation	Completed	\$408,521

LOS ANGELES PIERCE COLLEGE - PROJECT LIST/ SUPPORT SERVICES

Project/Building Name	Status	Budget at completion
Child Development Center	Completed	\$14,035,859
Business Education Renovation	Completed	\$2,960,045
Faculty Offices Renovation	Completed	\$3,695,275
Fine Art And Music Renovation	Completed	\$4,221,525
Animal Science Facilities	Completed	\$2,346,326
Campus Sheriff Station	Completed	\$597,936
Exhibition and Events Center	Completed	\$7,234,646
P.E. Facilities	Completed	\$23,978,878
Student Services Building	Completed	\$23,265,084
Old Book Store Renovation	Completed	\$3,240,319
New Maintenance and Operations Facility	Completed	\$17,056,544
New Library/Learning Crossroads Building	Completed	\$49,612,027
Parking Lots and Roadways Phase II	Completed	\$6,401,837
Photovoltaic Arrays for Parking Lots 1 and 8	Completed	\$10,880,307
Landscape and Site Master Plan	Completed	\$10,587,406
Central Plant	Completed	\$8,338,373
Campus-Wide Infrastructure Phase I	Completed	\$33,087,442
Campus-Wide Improvements - Parking Lots Phase I	Completed	\$9,400,191
Temporary Facilities - Relocation, Acquisition (Pierce Village)	Completed	\$12,760,196
Campus-Wide Improvements - Roadways Phase I	Completed	\$7,053,759
College - Initiatives	Completed	\$483,826
Technology Center	Cancelled	\$1,272,266
Life Science and Natural Resources Management	Cancelled	\$6,556
Total		\$627,755,475

LOS ANGELES SOUTHWEST COLLEGE PROJECT HIGHLIGHTS

Opened in 1967, Los Angeles Southwest College empowers a diverse student population to achieve their academic and career goals, and to become critical thinkers and socially responsive leaders. LASC offers associate degree programs in 35 fields, occupational certificates in 45 disciplines, community services and ESL/citizenship classes.



Los Angeles Southwest College



School of Behavioral & Social Sciences



Fitness and Wellness Center



LOS ANGELES SOUTHWEST COLLEGE - PROJECT LIST/ SUPPORT SERVICES

Project/Building Name	Status	Budget at completion
Campus Wide Security Upgrades	Planning	\$928,530
Campus Wide Infrastructure Upgrades - Phase II	Planning	\$4,256,796
School of Math & Sciences (Lecture Lab)	Design	\$43,159,016
Land Acquisition - Campus Corner Sign	Ongoing	\$1,703,836
Master Planning	Ongoing	\$2,363,566
Campus Project Support	Ongoing	\$35,216,541
Bulk Procurement	Ongoing	\$349
Campus Wide Technology Upgrades - Phase II	Completed	\$3,125,139
Cox Building - Phase II (Little Theater Upgrade)	Completed	\$18,070,584
Cox Building - Phase III	Completed	\$44,840,777
School of Career & Technical Education	Completed	\$35,878,840
School of Behavioral and Social Sciences	Completed	\$22,155,020
Student Services Activities Center	Completed	\$29,470,380
Cox Building - Phase I	Completed	\$2,339,446
PE Fields	Completed	\$1,146,141
Athletic Field House, Stadium	Completed	\$21,773,357
Child Development Center	Completed	\$20,326,390
Maintenance and Operation Facility	Completed	\$13,485,499
Central Plant	Completed	\$14,504,095
West Entry Drive and Parking Lot Facilities	Completed	\$14,390,887
Campus Corner Sign	Completed	\$876,709
Design Build - East and West Sides	Completed	\$3,648,935
School of Arts and Humanities	Completed	\$5,586,600
Campus Wide Infrastructure Upgrades - Phase I	Completed	\$7,999,386
Campus Wide Technology Upgrades - Phase I	Completed	\$2,216,610
Fitness and Wellness Center	Completed	\$18,659,052
Northeast Quadrant Parking Structure	Completed	\$15,315,629
RWGPL	Completed	\$11,777,851
Campus-Wide Improvements	Completed	\$2,677,071
School of English & Foreign Languages Modernization	Cancelled	\$7,373,618
Campus Wide Hardscape & Landscape Improvements and Fire Access	Cancelled	\$118,462
Renewable Energy	Cancelled	\$1,934
Total		\$405,387,046

LOS ANGELES TRADE-TECH COLLEGE PROJECT HIGHLIGHTS

Los Angeles Trade-Technical College has educated and trained students for 90 years. Top-rated in construction technology, transportation, culinary arts, fashion design, welding and cosmetology, Trade-Tech has prepared students to transfer to four-year universities worldwide. The 25-acre campus is located in downtown Los Angeles, just south of the central business district.



Los Angeles Trade Tech College



Magnolia Hall



Mariposa Hall



LOS ANGELES TRADE-TECH COLLEGE - PROJECT LIST/ SUPPORT SERVICES

Project/Building Name	Status	Budget at completion
Facilities M&O Headquarters	N/A	\$6,013,192
Art and Culinary Arts Building	Planning	\$61,619,611
RWGPL - Grand Avenue Enhancement	Planning	\$2,656,733
RWGPL - Blue Line Station Extension	Planning	\$2,583,493
Campus-Wide Infrastructure - Main Electrical Distribution System	Planning	\$10,476,674
South Campus	Construction	\$101,291,289
Learning Resources Center	Construction	\$41,904,199
Campus-Wide Improvements - North Quad	Construction	\$10,104,532
East Parking Structure	Construction	\$27,223,298
Master Planning	Ongoing	\$1,936,452
Campus Project Support	Ongoing	\$54,999,290
Bulk Procurement	Ongoing	\$461
Child Development Center	Completed	\$12,989,032
Auto, Metal Building	Completed	\$6,080,748
Liberal Arts Building	Completed	\$75,011,578
Construction Technology Building	Completed	\$18,849,571
Gymnasium	Completed	\$1,572,816
Math and Science Building	Completed	\$2,119,336
Fashion and Fine Arts Building - Phase I	Completed	\$6,091,002
Building C	Completed	\$54,858
Building E	Completed	\$450,009
Olive Street Parking	Completed	\$13,403,996
Campus-Wide Infrastructure - Emergency Lighting, Fire Alarm and Security Systems	Completed	\$1,706,692
RWGPL - F Ramp	Completed	\$4,395,725
Campus-Wide Improvements - Phase I	Completed	\$21,837,737
Campus-Wide Improvements - Phase II	Completed	\$5,344,667
Campus-Wide Improvements - Phase III	Completed	\$9,256,640
Demand Side Energy Optimization	Cancelled	\$57,212
Transportation and Accessibility Improvements	Completed	\$167,744
Land Acquisition - East Campus	Completed	\$33,500,515
Land Acquisition - South Campus	Completed	\$18,826,872
Fashion and Fine Arts Building - Phase II	On Hold	\$213,845
Construction Trades Center	On Hold	\$19,645,754
Performing Arts Center	On Hold	\$2,912,685
South Campus Athletic Field	On Hold	\$6,873,273
Wellness Center	On Hold	\$114,754
Re-grout and Seal Tiles in Restrooms	On Hold	\$4,955

Total		\$582,291,240
--------------	--	----------------------

LOS ANGELES VALLEY COLLEGE PROJECT HIGHLIGHTS

Since 1949, Los Angeles Valley College has offered students the education, skills and training necessary to pursue their dreams at the school's Valley Glen campus, located in the eastern San Fernando Valley. Valley College's maintenance and operations building was the first LEED-certified building completed by LACCD's bond-financed build program.



Los Angeles Valley College



Library and Learning Resource Center



Parking Structure



LOS ANGELES VALLEY COLLEGE - PROJECT LIST/ SUPPORT SERVICES

Project/Building Name	Status	Budget at completion
Campus Center Building - Phase II	Planning	\$5,865,276
Campus Infrastructure - Energy Infrastructure and Security System Improvements	Planning	\$9,824,057
Campus-Wide Improvements - Emergency Lighting, Fire Alarm and Security System	Planning	\$6,496,683
Sustainable Mall	Planning	\$3,281,803
Media and Performing Arts Center	Design	\$94,895,810
Athletic Training Facility-Baseball Stadium Bleacher	Construction	\$31,786,769
Community Workforce Development Center/New Administration	Construction	\$43,403,309
Monarch Center (Student Union)	Construction	\$36,768,207
Bulk Procurement	Ongoing	\$546
Campus Project Support	Ongoing	\$47,987,962
Master Planning	Ongoing	\$9,495,040
Parking Lots/Internal Roads	Completed	\$3,181,572
Campus-Wide Improvements - Upgrade	Completed	\$5,674,301
Multi-Purpose Community Services Center	Completed	\$23,307,509
Parking Structure	Completed	\$18,831,606
Admin Building	Completed	\$478,827
Allied Health and Sciences Center	Completed	\$73,313,077
Art Building	Completed	\$2,415,496
Behavioral Science Building	Completed	\$965,444
Business Journalism Building	Completed	\$1,919,667
Campus Center Building - Phase I	Completed	\$1,002,535
Campus Improvement - Central Plant/Utilities Infrastructure	Completed	\$26,710,552
Campus Improvement - IT Department	Completed	\$4,510,990
Campus-Wide Restrooms	Completed	\$2,599,036
Child Development Center	Completed	\$16,853,822
Engineering Building	Completed	\$1,709,117
Family Resource Center	Completed	\$1,737,709
Field House	Completed	\$8,189,446
Foreign Language Building	Completed	\$1,165,327
Gym Building	Completed	\$23,188,307
Humanities Building	Completed	\$1,749,598

LOS ANGELES VALLEY COLLEGE - PROJECT LIST/ SUPPORT SERVICES

Project/Building Name	Status	Budget at completion
Library and Learning Resource Center	Completed	\$37,639,698
Life Sciences Building	Completed	\$1,631,316
Maintenance and Operations, Sheriff Station	Completed	\$8,786,487
Math and Science Building	Completed	\$1,555,678
Motion Picture Building	Completed	\$2,321,110
MTA Bus Station Extension	Completed	\$2,203,165
Music Building	Completed	\$1,964,581
Planetarium Building Modernization	Completed	\$2,472,395
RWGPL	Completed	\$14,424,886
Student Service Center	Completed	\$26,850,141
Theatre Arts Building	Completed	\$3,180,285
New Planetarium Expansion	On Hold	\$151,440
Total		\$612,490,582

WEST LOS ANGELES COLLEGE PROJECT HIGHLIGHTS

Since it opened in 1969, West Los Angeles College has served thousands of students on its 70-acre campus near Culver City. West awards more than 600 degrees and certificates annually in approximately 50 fields, including STEM areas, computer science, allied health, law and film/tv production, arts, the liberal arts, humanities, and social and behavioral sciences.



West Los Angeles College



Student Services Building



Science and Math Building



WEST LOS ANGELES COLLEGE - PROJECT LIST/ SUPPORT SERVICES

Project/Building Name	Status	Budget at completion
Physical Education & Dance	Planning	\$761,545
Watson Center	Planning	\$15,491,277
Performing Arts Amphitheater	Planning	\$844,372
Technology Learning Center	Design	\$41,416,850
Central Plant Phase 1 & 2	Design	\$13,455,531
Campus Wide Infrastructure Improvements	Design	\$8,375,059
Plant Facilities Center - FMO	Design	\$3,445,665
Campus Entry Signage	Design	\$724,409
Land Acquisition - 10100 Property	Ongoing	\$47,594,818
Master Planning	Ongoing	\$9,257,911
Campus Project Support	Ongoing	\$36,905,907
Bulk Procurement	Ongoing	\$355
Science and Math Building	Completed	\$64,040,378
Heldman Learning Resource Center	Completed	\$4,491,333
RWGPL - Landscape/Hardscape	Completed	\$8,419,716
Campus Improvement- Street Improvements Fire Service Road	Completed	\$1,435,611
Student Services Building	Completed	\$36,257,627
Parking Structure - Lot 8	Completed	\$27,853,206
General Classroom	Completed	\$26,999,523
Allied Health and Wellness	Completed	\$16,568,960
Campus Improvements - Signage for Safety and Public Information	Completed	\$747,500
Campus Improvements - Infrastructure Bus Route Turn Around	Completed	\$623,614
Campus Improvements - Athletic Complex	Completed	\$8,136,648
College Boulevard - Second Access Road	Completed	\$14,611,390
North Parking Structure and PV Farm	Completed	\$10,638,330
Fine Arts Building Renovation	On Hold	\$40,344
Career Education	On Hold	\$1,724,108
Science Center Renovation	On Hold	\$50,891
Total		\$400,912,878

SATELLITES AND MULTICAMPUS

Satellite and Multi-Campus - Summary

Project Name	Status	Budget at Completion
ELAC Firestone Factory Building	Planning	\$192,395,892
District 770 HQ	Completed	\$49,897,160
LACCD Van de Kamp Innovation Campus	Completed	\$92,737,658
Health Careers Academy at County General	Closed	\$755,652
Mission College - Sunland/Tujunga	Closed	\$24,737
Valley College - Burbank	Closed	\$0
West College - LAX	Closed	\$109,302
Southwest Museum	Closed	\$0
Total		\$342,002,890

COLLEGE PROJECT CENTRAL SERVICES

College Project Central Services - Program Holding/Suspense Account

Project Name	Budget at Completion
Program Holding/Suspense Account	\$18
Total	\$18

College Project Central Services - Owner Controlled Insurance Program (OCIP)

Project Name	Budget at Completion
OCIP - City	\$7,804,544
OCIP - East	\$10,610,610
OCIP - Harbor	\$6,851,463
OCIP - Mission	\$6,814,844
OCIP - Pierce	\$10,298,331
OCIP - Southwest	\$6,562,810
OCIP - Trade	\$7,908,585
OCIP - Valley	\$9,268,421
OCIP - West	\$6,325,516
OCIP - District 770 HQ	\$10,353
OCIP - ADA Compliance	\$2,234,209
OCIP - Escrow Deposit	\$10,916,471
OCIP - Health Careers Academy	\$533,101
OCIP - Southgate	\$3,978,959
OCIP - Storm Water	\$849,532
OCIP - Prop A/AA	\$0
Total	\$90,967,748

COLLEGE PROJECT CENTRAL SERVICES

College Project Central Services - Recycling

Project Name	Budget at Completion
Recycling - City	\$821,035
Recycling - East	\$1,033,584
Recycling - Harbor	\$678,816
Recycling - Mission	\$605,333
Recycling - Pierce	\$845,556
Recycling - Southwest	\$764,616
Recycling - Trade	\$731,111
Recycling - Valley	\$858,432
Recycling - West	\$1,303,921
Recycling - Southgate	\$43,717
Total	\$7,686,118

College Project Central Services - Furniture, Fixtures and Equipment (FF&E)

Project Name	Budget at Completion
FF & E - City	\$2,344,559
FF & E - East	\$3,333,104
FF & E - Harbor	\$2,305,776
FF & E - Mission	\$1,834,857
FF & E - Pierce	\$3,661,701
FF & E - Southwest	\$2,703,264
FF & E - Trade	\$2,804,873
FF & E - Valley	\$1,897,767
FF & E - District 770 HQ	\$886,995
FF & E - West	\$2,075,005
FF & E - Southgate	\$954,236
Total	\$24,828,595

College Project Central Services - Legal

Project Name	Budget at Completion
Legal - City	\$5,54,961
Legal - East	\$7,517,337
Legal - Harbor	\$4,230,174
Legal - Mission	\$3,734,477
Legal - Pierce	\$6,975,244
Legal - Southwest	\$3,793,088
Legal - Trade	\$5,983,385
Legal - Valley	\$5,835,231
Legal - West	\$3,563,751
Legal - Southgate	\$1,051,507
Legal - Van De Kamp	\$1,006,240
Total	\$49,245,396

COLLEGE PROJECT CENTRAL SERVICES

College Project Central Services - Asset Management

Project Name	Budget at Completion
Asset Mgmt - City	\$3,258,698
Asset Mgmt - East	\$4,785,363
Asset Mgmt - Harbor	\$1,441,182
Asset Mgmt - Mission	\$2,042,464
Asset Mgmt - Pierce	\$3,817,840
Asset Mgmt - Southwest	\$2,565,735
Asset Mgmt - Trade	\$2,515,780
Asset Mgmt - Valley	\$2,383,056
Asset Mgmt - West	\$2,297,256
Asset Mgmt - District 770 HQ	\$3,000,000
Asset Mgmt - Southgate	\$1,794,430
Outreach for Small Local and Emerging, PLA, Internships, and Apprenticeships	\$22,448,661
Total	\$52,350,466

College Project Central Services - Move Management

Project Name	Budget at Completion
Move Mgmt - City	\$4,487,103
Move Mgmt - East	\$6,725,114
Move Mgmt - Harbor	\$3,818,418
Move Mgmt - Mission	\$3,907,164
Move Mgmt - Pierce	\$6,726,282
Move Mgmt - Southwest	\$4,238,523
Move Mgmt - Trade	\$3,602,295
Move Mgmt - Valley	\$4,244,511
Move Mgmt - West	\$4,403,345
Move Mgmt - Southgate	\$2,150,894
Total	\$44,303,649

College Project Central Services - Program Management

Project Name	Budget at Completion
Program Mgmt - City	\$24,705,993
Program Mgmt - East	\$28,202,283
Program Mgmt - Harbor	\$17,625,633
Program Mgmt - Mission	\$17,629,258
Program Mgmt - Pierce	\$28,201,013
Program Mgmt - Southwest	\$17,585,075
Program Mgmt - Trade	\$24,675,886
Program Mgmt - Valley	\$23,969,251
Program Mgmt - West	\$17,625,632
Program Mgmt - Southgate	\$10,575,379
Total	\$210,795,404

COLLEGE PROJECT CENTRAL SERVICES

College Project Central Services - Audit

Project Name	Budget at Completion
Audit - City	\$1,604,136
Audit - East	\$1,780,643
Audit - Harbor	\$1,156,934
Audit - Mission	\$1,160,346
Audit - Pierce	\$1,728,219
Audit - Southwest	\$1,125,075
Audit - Trade	\$1,592,747
Audit - Valley	\$1,561,628
Audit - West	\$809,982
Audit - Southgate	\$667,710
Audit - ADA Compliance	\$302,463
Audit - Anti-Graffiti	\$27,753
Total	13,517,636

College Project Central Services - Specialty Consulting

Project Name	Budget at Completion
Specialty Consulting - City	\$5,550,023
Specialty Consulting - East	\$5,985,006
Specialty Consulting - Harbor	\$3,889,799
Specialty Consulting - Mission	\$3,893,350
Specialty Consulting - Pierce	\$5,914,156
Specialty Consulting - Southwest	\$3,958,934
Specialty Consulting - Trade	\$5,252,956
Specialty Consulting - Valley	\$5,251,211
Specialty Consulting - Southgate	\$1,980,783
Specialty Consulting - West	\$4,261,674
Total	\$45,937,892

DISTRICTWIDE INITIATIVES

Districtwide Initiatives - Energy

Project Name	Budget at Completion
Renewable Energy - City	\$7,174,950
Renewable Energy - East	\$13,518,329
Renewable Energy - Harbor	\$31,660,641
Renewable Energy - Mission	\$3,898,470
Renewable Energy - Pierce	\$19,293,824
Renewable Energy - Southwest	\$8,483,875
Renewable Energy - Trade	\$13,625,773
Renewable Energy - Valley	\$6,570,770
Renewable Energy - West	\$5,351,158
Renewable Energy - Southgate	\$0
Renewable Energy - Van De Kamp	\$2,736,736
Renewable Energy - 770 HQ	\$20,079
Renewable Energy - Districtwide	\$3,129,982
Measurement and Demand Response	\$6,929,815
Renewable Energy - Owner's Reserve	\$6,457,632
Total	\$128,852,031

DISTRICTWIDE INITIATIVES

Districtwide Initiatives - Transportation and Accessibility Improvement

Project Name	Budget at Completion
Accessibility Improv. - City	\$4,076,648
Accessibility Improv. - East	\$14,558,532
Accessibility Improv. - Harbor	\$4,228,017
Accessibility Improv. - Mission	\$4,278,167
Accessibility Improv. - Pierce	\$6,144,626
Accessibility Improv. - Southwest	\$2,074,292
Accessibility Improv. - Trade	\$9,025,183
Accessibility Improv. - Valley	\$13,286,475
Accessibility Improv. - West	\$7,684,724
Accessibility Improv. - Southgate	\$101,727
Accessibility Improv. - Van De Kamp	\$1,478
Accessibility Improv. - District 770 HQ	\$46,321
Energy	\$209,574
Accessibility Improv. - Owner's Reserve	\$2,472,681
Total	\$67,978,870

Districtwide Initiatives - Technology

Project Name	Budget at Completion
Student Information System (SIS)	\$49,969,701
Connect LACCD Network	\$27,341,186
Servers & Support Equipment	\$18,956,258
One card System (Physical Security) and Monitoring	\$6,000,000
Facility Management (CMMS) and Building Management interface	\$6,115,181
Distance Education Collaboration	\$10,000
Media Lab Enhancement	\$10,000
Standards, Process Mapping and Program Strategy/Management	\$8,616,783
Energy	\$111,361
ProjectWise	\$2,068,837
Project Support	\$367,649
Technology Coordinators	\$8,226,714
Total	\$127,793,670

Districtwide Initiatives - Anti-Graffiti Program

Project Name	Budget at Completion
Anti-Graffiti Program - City	\$72,173
Anti-Graffiti Program - East	\$212,723
Anti-Graffiti Program - Harbor	\$191,379
Anti-Graffiti Program - Mission	\$51,508
Anti-Graffiti Program - Pierce	\$107,258
Anti-Graffiti Program - Southwest	\$134,406
Anti-Graffiti Program - Trade	\$162,046
Anti-Graffiti Program - Valley	\$70,621
Anti-Graffiti Program - West	\$80,009
Anti-Graffiti Program - Southgate	\$35,807
Total	\$1,117,930

DISTRICTWIDE INITIATIVES

Districtwide Initiatives - Warranty Program

Project Name	Budget at Completion
Warranty Program - City	\$370,284
Warranty Program - East	\$411,636
Warranty Program - Harbor	\$268,172
Warranty Program - Mission	\$264,303
Warranty Program - Pierce	\$419,824
Warranty Program - Southwest	\$264,920
Warranty Program - Trade	\$375,299
Warranty Program - Valley	\$362,404
Warranty Program - West	\$263,377
Warranty Program - Southgate	\$81,547
Warranty Program - Van De Kamp	\$3,310
Total	\$3,085,078

Districtwide Initiatives - Whole Building Commissioning

Project Name	Budget at Completion
Whole Building - City	\$2,289,246
Whole Building - East	\$2,544,976
Whole Building - Harbor	\$1,657,980
Whole Building - Mission	\$2,134,994
Whole Building - Pierce	\$2,595,568
Whole Building - Southwest	\$1,637,869
Whole Building - Trade	\$2,320,372
Whole Building - Valley	\$2,240,559
Whole Building - West	\$1,628,343
Whole Building - Southgate	\$731,127
Whole Building - Van De Kamp	\$30,322
Total	\$12,784,284

Districtwide Initiatives - Stormwater

Project Name	Budget at Completion
Stormwater - City	\$3,072,759
Stormwater - East	\$2,962,914
Stormwater - Harbor	\$609,893
Stormwater - Mission	\$1,861,732
Stormwater - Pierce	\$3,673,801
Stormwater - Southwest	\$1,702,902
Stormwater - Trade	\$3,334,408
Stormwater - Valley	\$2,186,003
Stormwater - West	\$2,671,330
Stormwater - Southgate	\$5,953
Stormwater - Van De Kamp	\$275
Stormwater - Owner's Reserve	\$912,410
Total	\$22,994,380

ACRONYMS AND ABBREVIATIONS

ADA	Americans with Disabilities Act
CMMS	Computerized Maintenance Managing System
DCOC	District Citizen’s Oversight Committee
ELAC	East Los Angeles College
ESC	Educational Service Center
FF&E	Furniture, Fixtures and Equipment
FMO	Facilities, Maintenance and Operations
HQ	Headquarters
HVAC	Heating, Ventilation and Air Conditioning
IT	Information Technology
LACC	Los Angeles City College
LACCD	Los Angeles Community College District
LAHC	Los Angeles Harbor College
LAMC	Los Angeles Mission College
LAPC	Los Angeles Pierce College
LASC	Los Angeles Southwest College
LATTC	Los Angeles Trade Tech College
LAUSD	Los Angeles Unified School District

ACRONYMS AND ABBREVIATIONS

LAVC	Los Angeles Valley College
LAX	Los Angeles International Airport
LEED	Leadership in Energy and Environmental Design
M&O	Maintenance and Operations
MTA	Metropolitan Transportation Authority
OCIP	Owner Controlled Insurance Program
PE	Physical Education
PV	Photovoltaic
RWGPL	Roadway, Walkway, Grounds, Parking Lots
SIS	Student Information System
SLE	Student Learning Environment
Specialty Consulting	Located in the “College Projects Central Services” list, this line item includes prevailing wage labor compliance program costs, small business bond assistance program costs, real estate consulting costs, construction documentation services, district wide design standards preparation, sustainability measurement, etc.
SPS	Student Program and Services
WLAC	West Los Angeles College