



Propositions A/AA and Measure J District Citizens' Oversight Committee



The Colleges

- East Los Angeles College
- Los Angeles City College
- Los Angeles Harbor College
- Los Angeles Mission College
- Pierce College
- Los Angeles Southwest College
- Los Angeles Trade Tech College
- Los Angeles Valley College
- West Los Angeles College

2009-10 Annual Report

About the District

The Los Angeles Community College District (LACCD) is the nation's largest community college district, covering a metropolitan area of 882 square miles and serving 36 cities in Los Angeles County. The LACCD is the fifth largest public agency in Southern California in terms of population and area served, ranking behind the Metropolitan Water District, the South Coast Air Quality Management District, the Metropolitan Transit Authority, and the County of Los Angeles. If the District were a U.S. state, it would be the 22nd largest in population, ranking behind Minnesota but ahead of Louisiana. Though it is now larger geographically than the Los Angeles Unified School District (LAUSD), it was once a subagency of the LAUSD. The nine colleges in LACCD encompass seven other unified or high school districts: Alhambra, Beverly Hills, Burbank, Culver City, Las Virgenes, Montebello and Palos Verdes.

Dear Stakeholders of the Los Angeles Community College District:

As Chair of the Los Angeles Community College District Citizens' Oversight Committee, I am pleased to report that the Los Angeles Community College District (LACCD) Sustainable Building program has come into full flower over the 2009-2010 fiscal year. Substantial progress has been made on the design and construction of buildings and grounds at each of the District's nine colleges and satellite sites. Elsewhere in this report one can find the descriptions and statistics on progress at each of the LACCD colleges, but in short it is the sense of the District Citizens' Oversight Committee (DCOC) that LACCD has been remarkably successful in reaching its goals.

Proposition 39, which made possible the passage of three bond measures that have provided funding for the LACCD Sustainable Building Program, requires that an independent financial audit and performance audit be conducted each year of the building program. The auditors regularly report their findings to the DCOC while in progress and upon completion of their work. The most recent audits were completed for the 2008-2009 fiscal year and presented to the DCOC at the beginning of 2010. These audit reports, and prior audit reports over the life of the program, have concluded that the LACCD Sustainable Building Program is managed effectively and within the bounds of state law and regulation. These audit reports are quite balanced in nature and show both the good aspects about the program, and items in need of improvement. The District staff and program management staff have been responsive in addressing the auditors recommendations.

In the process of transforming the LACCD colleges, the Sustainable Building Program has won numerous national, state and local awards over the last year and is viewed as a model nationally for how a large scale building program should be implemented. The sustainable building goals established by the LACCD Board of Trustees have been more than fulfilled with numerous buildings having been completed and certified as meeting the Leadership in Energy and Environmental Design (LEED) designation at the Silver and Gold levels. At the same time, the District continues to make good progress on its energy conservation and renewable energy goals. Nearly all of the Colleges have some form of sustainable technology including solar photovoltaics, drought tolerant landscaping, waterless urinals and recyclable materials.

The reaction from students, faculty and staff has been highly positive to the building program. With numerous buildings being completed and put into use, and public spaces transformed for active campus use, students, faculty and staff are being re-energized and able to commit to a program of education and service in state of the art facilities. Smart classrooms, cutting edge technology, modern furniture and equipment are creating learning environments that attract students and give faculty appropriate platforms to enable students in the acquisition of knowledge and skills that will be necessary for their current and future employment and transfer to advanced educational institutions.

The LACCD Sustainable Building Program is being run in an efficient and effective manner. The hard cost / soft cost ratio is being monitored closely and is currently running with 22% of expenses being soft cost (e.g., architects, management services, testing, inspection, audit, legal, etc.) and 78% being hard cost (e.g., bricks, concrete, steel, flooring, furniture etc.). The soft costs are well below national averages for major building programs of this type that typically see soft costs in the range of 25-30%. Bids on projects over the last year have been 20-30% below estimate due to the economic downturn and the Colleges' efforts to complete the design process in an expedient manner.

By Design, the Propositions A/AA and Measure J project lists are more extensive than the funds that were approved by the voters. This considerable dollar savings enables the Colleges to fund more of the projects on these lists.

During the fall of 2009, the LACCD Board of Trustees commissioned a special overall review of the LACCD Sustainable Building Program partly in response to the passage of Measure J and its initial implementation, and partially in response to the ongoing inquiry being made the Los Angeles Times into the various aspects of the building program by hiring Capstone Advisory Services. After more than a year of inquiry and countless hours of staff time committed to respond with mountains of information, the LA Times has not published any major article on the building program to date. Capstone Advisory Group presented their findings to the Trustees in the spring of 2010. The Board has taken several policy actions in response to the Capstone findings and has taken the remainder of the report under advisement. The work by Capstone was supplemented with a review by the District's bond counsel from Fulbright & Jaworski to determine if bond funds had been spent in a manner that was consistent with the requirements of Proposition 39. That review determined that there were certain areas of expenditure such as the funding of an enhanced outreach program to local, small and emerging businesses, and the funding of a program to recruit student interns, among others, that fell outside the boundaries of Proposition 39. In response, staffing of the building program has been altered to eliminate further expenditures in these areas.

The 2009-2010 year also saw some controversy over the completion and activation of the Van de Kamp Innovation Center in the Atwater/Glassell Park neighborhood. This project was originally contemplated as a satellite of Los Angeles City College with the former Van De Kamp Bakery designed as an adaptive reuse project to create offices, classrooms and computer labs. In addition, a new Education Building was built on the site to also serve as additional space for Los Angeles City College. In early 2009, Los Angeles City College determined that due to state budget problems and lack of funding to the District, it would not have the financial ability in the short term to operate a satellite facility as planned. As a result, the District took over the Van De Kamp site to facilitate completion of the buildings, create a stable operating base to allow the new buildings to be maintained, and allow this important public asset to be utilized in a manner that would provide maximum benefit for the community. Members of the community disagreed with this approach and worked actively to make known their desire for the originally contemplated satellite concept to be implemented. In the process, these concerned community members attended numerous meetings of the Board of Trustees and multiple meetings of the DCOC. In July of 2010, the DCOC held a special meeting at the almost completed Van De Kamp Innovation Center to better understand the nature of the issues being raised by the community. However, the DCOC notes that questions remain on the appropriateness of funds used to build the Innovation Center. The committee looks forward to reviewing the study of the District's Inspector General on this matter.

In summary, as described in some detail in this report, progress on the LACCD Sustainable Building program has been very strong over the last year. At present, the majority of the buildings contemplated under Measure J are either under construction or finishing design. The remainder of the buildings planned under Measure J will enter design over the next six to nine months. If that occurs, it is expected that the last building made possible by the funding from the three bond measures will be completed in 2014. The LACCD Sustainable Building Program is well on track to completing that goal.

Sincerely,

*Reginald Byron Jones-Sawyer Sr.
Chair, District Citizens' Oversight Committee*

Propositions A/AA and Measure J District Citizens' Oversight Committee Members

The Board of Trustees for the Los Angeles Community College District formed the District Citizens' Oversight Committee (DCOC) in June 2001 to provide a vital link between the District and the community with respect to implementation of Proposition A funds for construction and modernization projects within the District. The Proposition A bond measure totaled \$1.245 billion. The voters subsequently approved two additional bonds: Proposition AA and Measure J. Proposition AA bond measure totaled \$980 million and Measure J bond measure totaled \$3.5 billion. The DCOC consists of sixteen representatives from the local communities. The DCOC members are appointed for a two year term and can be re-appointed for an additional term not to exceed two consecutive two year terms.

DCOC Committee members:

Reginald Byron Jones-Sawyer Sr., *At-Large Representative, Chair*

Elliot Axelband, *WLAC Representative*

Dr. Yvonne Chan, *LAMC Representative*

Bob Courtney, *Foundation Representative*

Isa Meksin, *Senior Representative*

Richard Slawson, *Labor Representative*

Daniel Swartz, *Taxpayer Representative*

Mark Wilson, *LATTC Representative*

Nancy Carson, *LAHC Representative, Vice-Chair*

Harvey Berg, *LAVC Representative*

Dr. Philip Cohen, *ELAC Representative*

Russell Hughes, *Business Representative*

Henry Porter, *LASC Representative*

Donna Smith, *Pierce College Representative*

Kurt Tennyson, *LACC Representative*

Lisa Munoz, *Student Representative*

Los Angeles Community College District Board of Trustees:

Georgia L. Mercer, President

Miguel Santiago, First Vice President

Nancy Pearlman, Second Vice President

Kelly Candaele

Mona Field

Tina Park

Sylvia Scott-Hayes

Rodney Robinson, Interim Student Trustee

DCOC meetings are scheduled quarterly (four times a year).

All meetings are open to the public. The tentative schedule for 2010-11 is:

September 17, 2010, 12:00-2:00 PM—811 Wilshire Boulevard, 3rd floor Hearing Room

December 17, 2010, 12:00-2:00 PM—District Board Room

February 18, 2011, 12:00-2:00 PM—District Board Room

May 13, 2011, 12:00-2:00 PM—District Board Room

Please check the website for schedule changes:

<http://www.laccdbuildsgreen.org/about-oversight.php>

Report Covers Fiscal Year(s) 2003-10

This is the second formal report of Propositions A/AA and Measure J by the Citizens' Oversight Committee since its formation in June 2001. It is the intent of the District Citizens' Oversight Committee (DCOC) to issue reports annually, consistent with the requirements of Proposition 39.

Purpose and Responsibilities of the DCOC

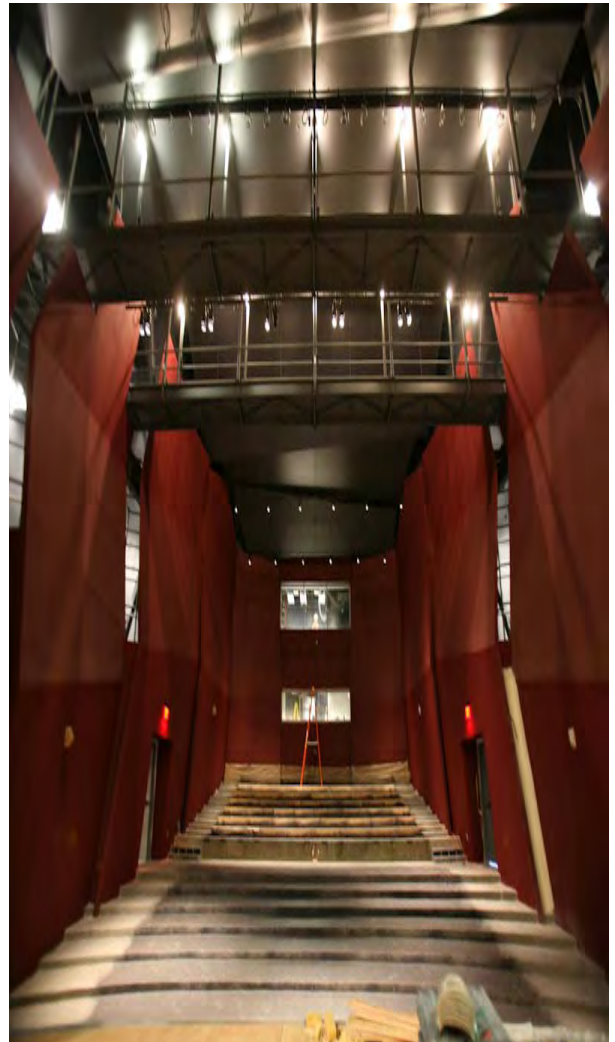
The DCOC members represent various segments of the local communities. The DCOC's role is to inform the public concerning the District's expenditure of revenues received from the sale of bonds as authorized by Propositions A/AA and Measure J. The committee will monitor the expenditures of the bonds and the progress of construction in completing the colleges' Facilities Master Plans.

DCOC findings based on review of independent financial and performance audits.

The District has received and the DCOC has reviewed the financial audits conducted by KPMG and the performance audits by Moss-Adams for the year ending June 30, 2009. The KPMG report concluded, "In our opinion, the financial statements referred to above present fairly, in all material respects, the net assets of the Los Angeles Community College District as of June 30, 2009 and 2008, and the changes in its net assets and its cash flow for the years then ended in conformity with the U.S. generally accepted accounting principles." The Moss-Adams report concluded, "Our performance audit found no exceptions with the use of Bond Program funds for approved Propositions A/AA and Measure J."

The District and DCOC has also reviewed the organizational and operations analysis report of the bond program by Capstone Advisory Group and the review of known activities by the law firm Fulbright & Jaworski L.L.P.

The Capstone Advisory Group LLC issued recommendations to the District for consideration and the District has implemented changes based on a number of these recommendations. There were also recommendations issued by Fulbright & Jaworski L.L.P. to ensure compliance with Proposition 39. The District took immediate action on several recommendations and the District is awaiting further analysis before taking additional action.



East Los Angeles College—Performing and Fine Arts Complex

Summary

The District Citizens' Oversight Committee (DCOC) has reviewed the audit reports by the outside auditors of all expenditures authorized by Propositions A/AA and Measure J to ensure funding is expended in compliance with Proposition 39. The DCOC has determined that based on the reviews of the expenditures, the audit reports and independent reports that were conducted show that for the most part expenditures have been consistent with the requirements of Proposition 39. Corrections may be needed in some of the areas of expenditure that were previously deemed permissible by previous audits, reports and bond counsel.

It is the opinion of the DCOC that the District is making appropriate corrective efforts in response to these recent reports and recommendations. The DCOC is confident that the bond funds are being properly managed and are in compliance with the requirements of Article XIII A Section 1(b)(3) of the California's Constitution and consistent with the District's approved Propositions A/AA and Measure J bonds. The DCOC will continue to follow-up and review the issues that are awaiting further clarification.



Los Angeles Trade-Technical College—South Campus

DCOC contact information

To contact the Los Angeles Community College District regarding the Propositions A/AA and Measure J Bond Program or members of the DCOC, please contact Laurelyn Johnson, Facilities Programs Specialist at telephone 213.891.2425 or email at johnsolk@email.laccd.edu. Our address is 770 Wilshire Boulevard, Los Angeles CA 90017.

Our website for DCOC is <http://laccdbuildsgreen.org/about-oversight.php>

East Los Angeles College Project Highlights

East Los Angeles College Project Highlights



The new three story Performing and Fine Arts Complex will house Theater Arts (42,110 square feet), the Recital Hall (77,068 square feet) and the Vincent Price Gallery (40,382 square feet). The design of the buildings will conform to LEED certification requirements as well as minimize the life cycle costs and impact of the building on the environment.



The new parking structure is 553,725 square feet and has six levels of parking. The structure includes a state-of-the-art digital parking space counter that displays parking availability. This reduces time spent searching for a parking space and decreases fuel consumption. One level of the structure is reserved for faculty and staff.



The new Technology Building was built in 2004 and is approximately 58,558 square feet.



This is the roof of the C1-Men's gymnasium building. This project consists of installation of a thin film photovoltaic system. These systems have been placed on several buildings at the college.

East Los Angeles College - Project List

Completed Projects

Project Name	Date Completed/ Anticipated Completion	Budget
General Classroom Building	8/6/10	\$25,269
Baum Center	7/26/10	\$7,447,702
Baum Center - Master	7/26/10	\$14,654,647
Campus Student Center / Swing Space	5/7/10	\$214,355
Transit Center- Site Preparation	12/31/09	\$246,883
Academic Network Integrated Backbone	12/21/09	\$4,302,491
E9 & G9 Boiler Replacement	07/30/09	\$357,896
Art Relocation F6,F7,F8	06/26/09	\$3,902,211
Transit Center - Master	5/31/09	\$52,920
Parking Structure Lot 3	4/20/09	\$29,556,563
PE Fields - Women's Softball Field	03/05/09	\$1,773,321
Fitness Center- Men's Gym	01/26/09	\$3,706
Conversion Baseball Field to Parking Lot	08/30/08	\$541,021
Waterless urinals	08/01/08	\$114,600
Temporary Facilities - Swing Space Phase 2	07/31/08	\$2,224,369
Demolition -Facilities	06/03/08	\$1,667,291
Demolition - Master	6/3/08	\$46,360
Northwest Parking Photovoltaic Farm	04/21/08	\$117,199
Central Plant and Photovoltaics	4/21/08	\$163,120
Temporary Facilities - K6 Relocation	03/14/08	\$43,656
Temporary Facilities - R5 Replacement	03/14/08	\$1,520,557
Temporary Facilities - Master	01/16/08	\$119,916
Temporary Facilities - R5A Relocation	12/07/07	\$839,180
Temporary Facilities - N2 Modernization	12/07/07	\$108,593
ELAC Stadium - Alteration Scoreboard	11/07/07	\$1,119,526
Northeast Parking Resurfacing	09/07/07	\$59,879
Temporary Facilities - Relocation of Swing Space - N2 Relocation	08/03/07	\$857,593
F, G, H, & K Mechanical and Electrical Upgrades	07/13/07	\$484,227
Temporary Facilities - Relocation or Swing Space	06/01/07	\$5,211,232
Campus-Wide Improvements - Fire Alarm	05/21/07	\$644,627
Campus-Wide Improvements - F, G, H, & K Mechanical and Electrical Upgrade	11/29/06	\$1,228,198
RWGPL - Parking Structure Lot 3 Site Preparation Package	11/07/06	\$6,885,462
Completed Projects Subtotal		\$86,534,570

Please note: project budgets include non-bond funding sources

East Los Angeles College - Project List

Completed Projects (continued)

Project Name	Date Completed/ Anticipated Completion	Budget
PE Fields - Baseball Lockers, Dugout & Fencing	05/01/06	\$2,239,960
ELAC Stadium - Bleacher Covers	01/11/06	\$659,026
ELAC Stadium - Stadium Concrete Coating	01/03/06	\$752,890
RWGPL	09/14/05	\$413,406
Demolition - K8 Building	09/06/05	\$40,352
Campus-Wide Improvements - E3 & E5 Multimedia Conversion	03/25/05	\$594,109
Campus-Wide Improvements - Master	3/25/05	\$81,995
Campus-Wide Improvements - Fire Loop	01/31/05	\$529,155
Environmental Impact Report	09/22/04	\$698,914
Bailey Library - Electrical and Mechanical Upgrade	06/29/04	\$2,029,824
Restrooms-Modernization Bldg	06/10/04	\$1,050,949
PE Fields - Ramp to Temporary Parking	06/04/04	\$257,890
PE Fields - Track and Field Events	11/15/03	\$1,050,391
Temporary Facilities - Off Site Parking	03/12/03	\$1,941,928
Campus-Wide Improvements - SCE Transformer Upgrades	03/12/03	\$322,659
ELAC Stadium-Benches & Concrete Sealing	03/01/03	\$79,429
Campus-Wide Improvements - Site Power Upgrade Study	12/31/02	\$34,000
C-Buildings Utility & Site Improvements	12/02/02	\$229,648
PE Fields - Baseball Safety Fencing	10/03/02	\$16,461
PE Fields - Stadium Synthetic Turf	08/30/02	\$758,834
Physical Plant Building	N/A	\$3,628,750
ELAC Stadium Modernization	N/A	\$767,136
Technology Center	N/A	\$9,370,781
Campus-Wide Improvements - Building E7 & E8 Abatement	N/A	\$122,648
Campus-Wide Improvements - Feeder 7	N/A	\$13,565
Waterless Urinals (Southgate)	N/A	\$165
Land Acquisition (Southgate)	N/A	\$31,966,637
Completed Projects Total		\$146,186,072
Active Projects		
Science Career & Mathematics Building	8/9/14	\$73,703,470
Student Success and Retention Center	1/22/14	\$81,722,186
Campus Student Center/ Book Store Complex	10/11/13	\$34,087,234
Active Project Subtotal		\$189,512,890

Please note: project budgets include non-bond funding sources

East Los Angeles College - Project List

Active Projects (continued)

Project Name	Date Completed/ Anticipated Completion	Budget
Health Careers Center	11/19/12	\$41,015,268
Baseball Paving & Fencing	7/8/12	\$724,010
Men's Baseball Field Renovation-Parking Lot to Baseball Field	7/8/12	\$3,733,266
Parking Structure Lot 4/FacilitiesMaintenance (Northeast)	2/9/12	\$17,228,195
Transit Center	12/23/11	\$919
Bailey Library Learning Center Modernization	11/14/11	\$14,861,815
Stadium Marquees	10/13/11	\$2,478,481
Science Career & Mathematics Building - Swing Space	8/23/11	\$8,017,391
Student Success and Retention Center / Swing Space	8/5/11	\$7,255,389
E3 & E5 Replacement Building	5/6/11	\$18,769,324
ELAC Stadium - East End Zone Terrace	1/12/11	\$46,909
Stadium Modernization - Phase 1	1/12/11	\$3,591,097
Student Services Building E1	12/3/10	\$33,326,935
K5 Retaining Wall	12/2/10	\$400,000
Campus Improvements - Master	11/3/10	\$4,615,754
Performing and Fine Arts Complex	10/15/10	\$87,250,854
Central Plant	10/11/10	\$27,856,467
Swim Stadium Modernization	N/A	\$28,960
EIR (Southgate)	N/A	\$488,963
Master Plan (Southgate)	N/A	\$493,960
Firestone Site (Southgate)	N/A	\$2,043,837
Active Projects Total		\$463,740,684
Project Support		
Bailey Library Relocation	N/A	\$145,277
Bulk Purchase - Athletic/Fitness Equipment	N/A	\$5
Bulk Purchase - Child Development Center FF&E	N/A	\$17
Bulk Purchase - Musical Instruments	N/A	\$441
Bulk Purchase - Power tools	N/A	\$106
Campus Program Management - Asset Assessment and Move management	N/A	\$1,077,482
Campus Program Management - Election Costs - Prop A	N/A	\$72,356
Campus Program Management - Inspection and Testing	N/A	\$13,798
Project Support Subtotal		\$1,309,482

Please note: project budgets include non-bond funding sources

East Los Angeles College - Project List

Project Support (continued)

Project Name	Date Completed/ Anticipated Completion	Budget
Campus Program Management - Legal Services	N/A	\$653,047
Campus Program Management - Other Consulting Services	N/A	\$3,973,447
Campus Program Management - Performance / Financial Auditing Services	N/A	\$363,335
Campus Program Management - Program Management Services	N/A	\$15,075,157
Campus Program Management - Project Management Services	N/A	\$25,084,502
Campus Program Management - Reimbursables	N/A	\$1,259,845
DW-Scanning & Coding	N/A	\$567
Land Acquisition	N/A	\$136,020
Master Planning	N/A	\$323,895
Master Planning: Site Survey and Infrastructure Studies	N/A	\$42,170
RWGPL - Monterey Park Water Upgrade	N/A	\$1,500,000
RWGPL - Utility Infrastructure and Traffic Improvements	N/A	\$28,802,873
RWGPL-Off-site Fire Line	N/A	\$5
Temporary Facilities - Lease Component	N/A	\$760,983
Site Survey (Southgate)	N/A	\$180,459
Public Works (Southgate)	N/A	\$157
VIDEO CONF CTRS MOD (Southgate)	N/A	\$336
Bulk Purchase - Power tools (Southgate)	N/A	\$48
Bulk Purchase - Musical Instruments (Southgate)	N/A	\$96
Video Conference Equipment (Southgate)	N/A	\$4,115
Bulk Purchase - Child Development Center FF&E (Southgate)	N/A	\$8
DW-Scanning & Coding (Southgate)	N/A	\$661
Asset Assess & Move (Southgate)	N/A	\$115,682
Campus Program (Southgate)	N/A	\$2,045,519
Project Management (Southgate)	N/A	\$913,461
Legal Services (Southgate)	N/A	\$178,841
Audit (Southgate)	N/A	\$44,446
Other Consulting Services (Southgate)	N/A	\$696,512
Project Support Total		\$83,465,669

Please note: project budgets include non-bond funding sources

East Los Angeles College - Project List

Projects On-Hold/Cancelled

Project Name	Date Completed/ Anticipated Completion	Budget
Bailey Library - Roof Replacement	N/A	\$ 1,350
Baum Center - G1 Security Hardware	N/A	\$ 9,896
Campus Center F5	N/A	\$ 36,399
Campus Conference Center	N/A	\$ 367,598
Campus Improvements - Outdoor Marquee and Signage	N/A	\$ 58,432
Campus-Wide Improvements - Tech Center Central Quad	N/A	\$ 45,758
Community Outreach Educational Center	N/A	\$13,608
Health Careers Center- Swing Space	N/A	\$18,868
Health Care Careers Center	N/A	\$ 22,585
Language Arts Center	N/A	\$189,190
Parking Structure Lot 2 - Pool	N/A	\$11,270
Projects On-Hold/Cancelled Total		\$774,954
Grand Total		\$694,167,379

Los Angeles City College Project Highlights

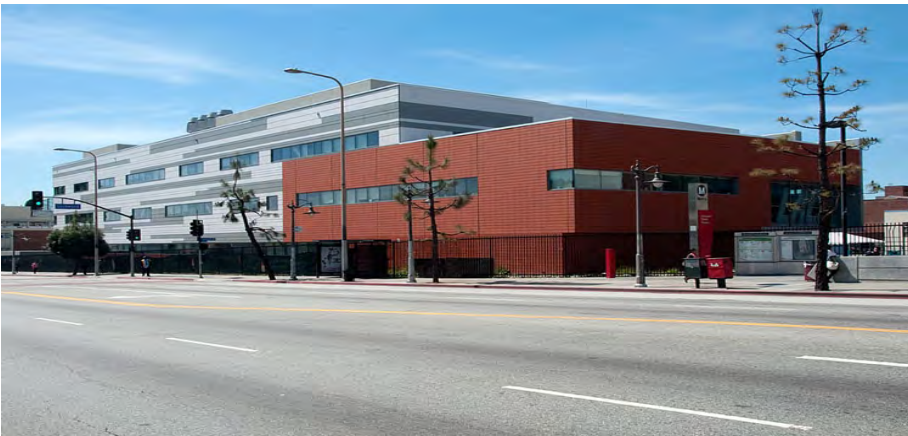
Los Angeles City College Project Highlights



The Center for Child & Family Studies is a 26,772 square foot building. The campus Child Development Center is on the first level and the Child & Family Studies department is on the second level.



The new Martin Luther King Jr. Library houses more than 150,000 books in a 70,365 square foot facility.



The Science and Technology Building presents a new campus gateway adjacent to MTA's Redline Vermont/Santa Monica subway station. The building's exterior has the latest in construction technology, including a rain screen system of terra cotta tile and cement fiberboard panels, selected for their energy-saving aspects and as a healthier alternative to the existing campus brick facades.



The parking structure consists of two levels of covered parking, totaling more than 1,900 spaces. There is also a 12,000 gross square foot maintenance facility that includes a shipping and receiving dock.

There will be athletic fields on the top level including a softball field, soccer field and a running track that are expected to be open after 2011.

Los Angeles City College - Project List

Completed Projects

Project Name	Date Completed/ Anticipated Completion	Budget
RWGPL - Site Utilities Infrastructure	9/7/2010	\$26,020,014
Food Lab Upgrade	3/6/2010	\$1,005,949
Franklin Hall Modernization	2/9/2010	\$22,063,537
Door Replacement Project	2/6/2010	\$283,776
RWGPL - Central Plant	9/10/2009	\$7,325,777
Science and Technology Building	9/1/2009	\$43,419,575
Clock System Replacement	8/29/2009	\$300,000
IT Generator	2/27/2009	\$138,528
Student Lounge	1/15/2009	\$556,000
Child Development Center	12/29/2008	\$14,612,115
Maintenance Facilities	8/29/2008	\$308,144
Parking Structure-Health, Fitness, PE Building, Athletic Field	8/22/2008	\$51,811,720
Relocation of Community Services and Temporary Parking Lot	8/2/2008	\$38,465
Relocation of Other Temporary Spaces	7/15/2008	\$111,939
Parking Mitigation - I-Pass	6/30/2008	\$539,520
MLK Library - Learning Resource Center	6/16/2008	\$22,329,607
Roofing - Chavez, Rad Tech, Holmes, Theater	4/5/2008	\$585,651
Relocation of Other Temporary Spaces	11/7/2007	\$88,589
Campus-Wide Computer Network for Internet Access	3/15/2007	\$54,627
Relocation of Child Development Center	1/25/2007	\$1,124,032
Restrooms Modernization	11/15/2006	\$1,001,564
Signage for Safety and Public Information	8/26/2006	\$818
Land Acquisition	6/1/2006	\$6,838,675
Relocation of Chemistry Department	5/18/2006	\$912,491
Temporary Student Center	1/26/2006	\$187,680
Demolition of Chemistry Building, Bleachers and Pool	11/3/2005	\$45,625
Relocation of Clausen Hall Student Center	1/13/2005	\$79,135
Temporary Facilities - Parking	1/12/2005	\$464,956
Clausen Hall - DSPS	10/21/2004	\$645,020
Campus-Wide Improvements - HVAC	10/20/2004	\$17,100
Completed Projects Subtotal		\$202,910,630

Los Angeles City College - Project List

Completed Projects (continued)

Project Name	Date Completed/ Anticipated Completion	Budget
Demolition of Bungalows for P.E. Building	10/7/2004	\$272,696
Demolition of Maintenance Bungalows	3/19/2004	\$117,868
Demolition of Tennis Courts, Bungalows	12/3/2003	\$263,663
Relocation of Transfer Center and M&O	8/21/2003	\$226,575
Campus-Wide Improvements - State Square Utilities	7/9/2003	\$108,307
Completed Projects Total		\$203,899,738
Active Projects		
Land Acquisition	12/31/2014	\$37,161,103
Emergency Lighting, Fire Alarm, and Security Systems	12/31/2014	\$865,837
Temporary Facilities/3020 Wilshire	12/1/2014	\$8,989,204
RWGPL - Landscaping/Hardscape Improvements	11/6/2014	\$17,260,231
Monroe Street Plaza	7/14/2014	\$960,000
Student Services Center	1/10/2013	\$51,508,918
Physical Plant (M&O Building)	12/31/2012	\$7,430,681
Tennis Courts	12/28/2012	\$521,933
Green Technology Student Union Building	9/5/2012	\$41,982,423
Clausen Hall Modernization	8/7/2012	\$19,436,980
Holmes Hall Modernization	7/19/2012	\$6,828,955
Health, Fitness, PE Building	1/31/2012	\$27,474,985
RWGPL - Traffic Mitigation	9/22/2011	\$6,400,500
M&O Facilities	6/28/2011	\$342,573
Chemistry Building Modernization	6/22/2011	\$6,592,322
Life Sciences Modernization	6/22/2011	\$3,796,280
Jefferson Hall Modernization	5/4/2011	\$12,554,935
Sidewalk Repairs Parking Lots 1 & 2	12/22/2010	\$208,000
Athletic Field Relocation	12/8/2010	\$2,298,717
Campus-Wide Retro Commissioning	11/16/2010	\$542,000
Active Projects Total		\$253,156,577

Please note: project budgets include non-bond funding sources

Los Angeles City College - Project List

Planned Projects

Project Name	Date Completed/ Anticipated Completion	Budget
Cesar Chavez - Admin Building Modernization	12/2/2014	\$22,532,278
Learning Support Center	12/31/2013	\$23,051,529
Da Vinci Hall	8/7/2013	\$19,159,213
Demolition of Men's Gym, Pool, Maint & Misc Bungalows	5/21/2013	\$3,489,689
South Gym Modernization	1/8/2013	\$11,694,295
Planned Projects Total		\$79,927,004

Project Support

Environmental Impact Report (EIR)	4/14/2010	\$481,545
Master Planning	4/14/2010	\$1,006,313
Video Conference Equipment	9/24/2009	\$1,395
DW-Scanning & Coding	8/1/2008	\$2,045
Bulk Purchase - Athletic/Fit Equipment	6/1/2008	\$4
Bulk Purchase - Child Development Center FF&E	6/1/2008	\$15
Bulk Purchase - Musical Instruments	6/1/2008	\$378
Bulk Purchase - Power tools	6/1/2008	\$91
Waterless urinals	6/1/2008	\$311
Reimbursables	3/31/2008	\$276,029
Inspection and Testing	7/28/2006	\$17,665
CEQA	1/22/2003	\$47
Election Costs Prop A	6/30/2001	\$61,840
Asset Assessment and Move Management	N/A	\$769,678
Campus Program Management - Legal Services	N/A	\$525,406
Contingency	N/A	\$11,410,778
Other Consulting Services	N/A	\$3,719,688
Performance / Financial Auditing Services	N/A	\$312,677
Program Management Services	N/A	\$16,824,608
Project Management Services	N/A	\$21,055,955
Site Survey and Infrastructure Studies	N/A	\$538,687
Project Support Total		\$57,005,155

Los Angeles City College - Project List

Projects On-Hold/Cancelled

Project Name	Date Completed/ Anticipated Completion	Budget
Cafeteria Building	N/A	\$17,054
Campus-Wide Improvements - All Other Projects	N/A	\$150
Campus-Wide Improvements - LEED and Site Improvements	N/A	\$5,980
Clausen Hall - Modernization	N/A	\$33,146
Communications Building	N/A	\$28,619
Demolition of Men's Gym	N/A	\$111,673
Family Life Science	N/A	\$112,331
Martin Luther King Jr. Annex (Learning Skill Center)	N/A	\$76,915
Parking Structure - Student Admissions Center	N/A	\$751,541
RWGPL - Replace Electrical at Chemistry Demo Site	N/A	\$41,220
Science and Technology II	N/A	\$135,328
Student Admissions Center	N/A	\$921,548
Theater Building	N/A	\$38,789
Women's Gym Renovation	N/A	\$31,000
Projects On-Hold/Cancelled Total		\$2,305,294
Grand Total		\$596,293,768

Los Angeles Harbor College Project Highlights

Los Angeles Harbor College Project Highlights



The Northeast Academic (NEA) Center and Student Services (SS) buildings consist of a state-of-the-art lecture and lab facility and new student services offices. The NEA is 66,000 square feet and the SS is 44,000 square feet. The NEA building houses 35 classrooms, 60 offices, and related support space. The SS building houses enrollment, financial aid, counseling services, all campus administrative functions and presidential/vice-presidential office suites. The intent of SS building is to be a one-stop shop for all student services needs.



The PE/Wellness Center is a new 41,651 square foot facility that expanded and replaced the existing Physical Education Building. The new facility was constructed south of the existing facility.



The New Technology Building is 59,140 square feet and serves students in electrical engineering, drafting, architecture, television and film, the media arts (Photoshop, digital editing, web design) and business.



The new Child Development Center is approximately 18,581 square feet and houses a childcare center, a demonstration lab and office space.

Los Angeles Harbor College - Project List

Completed Projects

Project Name	Date Completed/ Anticipated Completion	Budget
SPS Modernization	8/20/2010	\$189,100
PE and Wellness Center	3/31/2010	\$19,324,192
Child Development Center	2/26/2010	\$9,659,383
Photovoltaic Installation	1/21/2010	\$24,700,000
Campus Parking Lot Reconstruction	1/21/2010	\$9,502,365
Technology Instruction & Classroom	2/9/2009	\$28,472,340
Student Services and Administration	12/18/2008	\$20,461,960
Northeast Academic Hall	12/18/2008	\$28,592,005
Central Plant	12/18/2008	\$11,289,098
Facilities Maintenance Operations	3/7/2008	\$14,910,163
Athletic Fields	8/3/2007	\$6,207,398
Utilities	5/25/2007	\$10,267,578
Surface Parking & Loop Road	11/11/2006	\$3,005,246
Nursing	11/9/2006	\$975,209
Fine Arts	10/27/2006	\$1,645,031
Music	10/27/2006	\$1,899,289
Theater, Drama, Speech	9/29/2006	\$3,398,381

Completed Projects Total **\$194,498,738**

Active Projects

S.A.I.L.S. SPS / Health	7/23/2012	\$4,629,930
Theater, Drama, Speech (Fine Arts Quad)	7/18/2012	\$10,892,155
Job Placement / Data Center (Old Admin. Bldg.)	7/9/2012	\$10,660,113
NEA/SS Enhancement	3/30/2012	\$1,753,725
Extended Education Modernization (General Classroom Bldg.)	3/14/2012	\$2,721,005
Library and LRC	3/7/2012	\$30,795,922
Tech Bldg. Enhancement	1/5/2012	\$1,264,837
T.V. Studio (inside Technology Instr. & Classroom Bldg)	12/30/2011	\$3,897,021
Marquee Modernization	8/26/2011	\$1,454,278
Campus Events Office & Restrooms	7/22/2011	\$998,700
West Parking Structure	6/14/2011	\$24,848,773
PE and Wellness Center (Phase II - Demo old gym & site work)	6/3/2011	\$1,428,500
Softball Field Modernization	11/3/2010	\$498,341

Active Projects Subtotal **\$95,843,300**

Please note: project budgets include non-bond funding sources

Los Angeles Harbor College - Project List

Active Projects (continued)

Project Name	Date Completed/ Anticipated Completion	Budget
S.A.I.L.S. Infrastructure Upgrades, Land/Hardscape, Security	6/26/2014	\$31,786,908
S.A.I.L.S. Student Union	2/19/2014	\$42,263,223
Science Complex	11/23/2012	\$62,725,500
S.A.I.L.S. Astronomy	7/30/2012	\$2,721,347
Active Projects Total		\$235,340,278
Planned Projects		
ADA Transition	03/29/14	\$2,344,819
Project Support		
Master Planning	N/A	\$1,617,061
Campus Improvements - Space Management	N/A	\$1,715,410
Campus Improvements	N/A	\$124,000
Master Planning	N/A	\$1,504,957
Campus Program / Project Management	N/A	\$32,496,183
Campus Program Management Other Consulting Services	N/A	\$3,193,803
Project Support Total		\$40,651,414
Projects On-Hold/Cancelled		
S.A.I.L.S. Existing Buildings Exterior Upgrades Campus Wide	N/A	\$4,614,317
Land Acquisition	N/A	\$1,247,651
Projects On-Hold/Cancelled Total		\$5,861,968
Grand Total		\$478,697,217

Los Angeles Mission College Project Highlights

Los Angeles Mission College Project Highlights

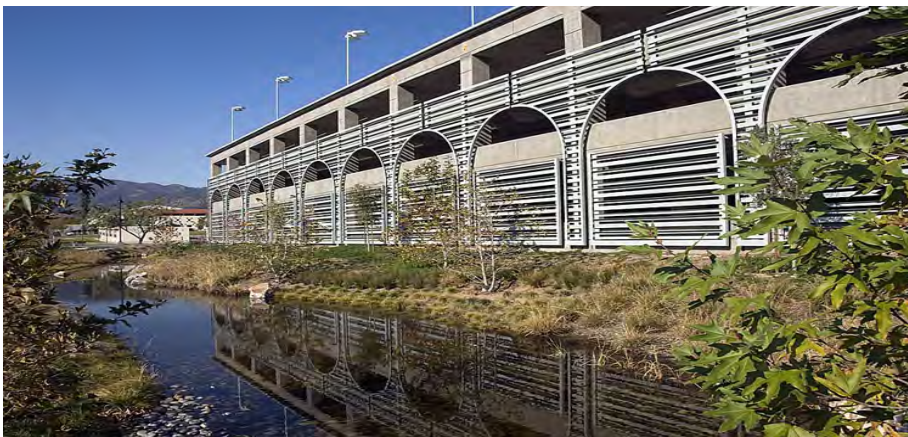


This project consists of a 93,011 square foot building with two levels and basement. The building consists of classrooms, locker rooms, restrooms, a gymnasium, weight fitness center, multi-purpose rooms, faculty offices, and storage rooms.



The new Center for Child Development Studies and Child Development Center is 28,666 square feet and serves as a child development laboratory for students majoring in Childhood Education where they may identify, study and demonstrate developmentally appropriate practices and principles of child development and education.

It also offers a childhood education and care program for children and their families in the college community and the community-at-large.



This parking structure increased student parking spaces by 608 and faculty and staff parking by 116 spaces. This structure holds a total of 1,225 vehicles. There is also a photovoltaic (PV) farm located on the rooftop of this parking structure. The PV farm is capable of generating 165kw of renewable energy.



This project provides a new entrance walkway that connects to the bus stop. Also included in this project were walkway improvements, a bike rack installation, walkway lighting, and security enhancements.

Los Angeles Mission College - Project List

Completed Projects

Project Name	Date Completed/ Anticipated Completion	Budget
Health and P.E., Fitness Center	2/22/2010	\$50,378,495
Campus Center Tenant Improvements	12/30/2009	\$681,000
Campus-Wide Infrastructure - Fire Safety Systems (FSS)	9/1/2009	\$1,114,254
RWGPL - Entrance Monument	6/9/2009	\$1,378,170
Instructional Building - Culinary and Faculty	4/15/2009	\$1,420,998
Campus-Wide Infrastructure - Campus Security Systems (CSS)	4/5/2009	\$1,883,295
Child Development Center	10/28/2008	\$13,522,857
Campus-Wide Infrastructure - Electrical substation	7/10/2008	\$439,559
Temporary Facilities - Plant Facilities , Media Arts & Sheriff Station Bungalows	6/20/2008	\$2,280,143
Campus-Wide Infrastructure - VOIP	5/30/2008	\$636,891
Campus-Wide Infrastructure - IT	5/15/2008	\$2,038,919
Campus-Wide Infrastructure - EMS	4/29/2008	\$1,235,578
Parking Structure A - Photovoltaic System	3/21/2008	\$2,413,112
Instructional Building - Classroom Conversion to Biology Lab	12/31/2007	\$1,527,370
Parking Structure A	9/30/2007	\$23,241,750
Temporary Facilities - Relocation or Acquisition	8/31/2007	\$2,025,868
Campus Center - Flooring Replacement	6/24/2007	\$280,606
Parking Structure A - Temporary Parking Lot	6/13/2007	\$2,189,264
Campus-Wide Infrastructure	10/31/2006	\$4,517,485
Campus Center - Title V Computer Lab and Classroom	2/3/2006	\$432,620
RWGPL - Delivery and Washdown Control Area	4/15/2005	\$70,370
RWGPL - CSB Parking Lot	4/19/2003	\$139,012
Instructional Student Services Building - Modernization	7/30/2002	\$1,933,654

Completed Projects Total **\$115,781,270**

Active Projects

Student Services Center/Admin Building	9/5/2013	\$37,374,583
Campus Services Building and Sheriffs' Station	4/30/2012	\$748,050
Campus Modernization Phase 2	4/30/2012	\$16,479,779

Active Projects Subtotal **\$54,602,412**

Los Angeles Mission College - Project List

Active Projects (continued)

Project Name	Date Completed/ Anticipated Completion	Budget
Campus Modernization Phase 3	3/27/2012	\$5,225,000
East Complex	2/13/2012	\$90,954,875
RWGPL - LADWP Water Line Relocation at Extended Campus	2/13/2012	\$260,225
Athletic Complex	12/2/2011	\$22,887,203
Media Arts Center	10/5/2011	\$30,695,763
Campus Administrative Services Building Remodel	4/19/2011	\$229,216
Campus Modernization Phase 1	4/19/2011	\$13,342,301
Campus Improvements - Central Quad Improvements	4/19/2011	\$148,851
Campus Improvements - Executive Corridor Improvements	4/19/2011	\$107,452
Family and Consumer Studies Building	11/1/2010	\$52,149,062
Active Projects Total		\$270,602,360
Project Support		
Master Planning & Land Acquisition	12/1/2013	\$15,765,554
Environmental Impact Report (EIR) & support	12/1/2013	\$4,264,150
Soil Testing	12/1/2013	\$111,946
Campus Program Management - Asset Assessment and Move Management	12/1/2013	\$455,627
Campus Program Management - Program Management Services	12/1/2013	\$9,492,154
Campus Program Management - Project Management Services	12/1/2013	\$17,595,909
Campus Program Management - Legal Services	12/1/2013	\$806,001
Campus Program Management - Performance/Financial Auditing Services	12/1/2013	\$230,317
Campus Program Management - Other Consulting Services	12/1/2013	\$3,745,117
Campus Program Management - Election Costs - Prop AA	12/1/2013	\$46,695
RWGPL - Campus-Wide Landscaping, Irrigation and Signage	12/1/2013	\$438,704
Project Support Total		\$52,952,174
Projects On-Hold/Cancelled		
Plant Facilities	N/A	\$1,468,705
Learning Assistance Center - Modernization	N/A	\$1,530,315
Projects On-Hold/Cancelled Total		\$2,999,020
Grand Total		\$442,334,824

Please note: project budgets include non-bond funding sources

Pierce College Project Highlights

Pierce College Project Highlights



This project renovated/reconstructed the North & South Gymnasiums, existing pool and deck, added a wellness pool, provided for renovations to Football Stadium, and related support facilities including various play fields. A new Football/Soccer scoreboard was also included in this project.



The New Student Services Building is three stories and is 50,449 square feet. The building is located at the southern tip of the main Pedestrian Mall and houses Career/Transfer Center, Admissions & Records, Financial Aid, Counseling, Aid for Students with Disabilities, Health Services, International Students, EOPS, High School Outreach and Administration.



The new Child Development Center is 14,261 square feet and has a courtyard configuration. It includes demonstration areas, staff areas, parent/staff room, observation rooms, a kitchen, and an exterior playground with equipment.



This is the new FHWA-Brahma Drive that is designed to increase traffic safety and straightens the road.

Pierce College - Project List

Completed Projects

Project Name	Date Completed/ Anticipated Completion	Budget
Center for the Sciences	08/30/10	\$60,051,077
PLRW - Horticulture Intersection at Brahma Drive	08/30/10	\$825,403
Child Development Center	08/27/10	\$11,283,581
Phase I Renovations - Business Education	08/16/10	\$3,058,209
Phase I Renovations - Business Education - Computer Labs Renovation	08/16/10	\$334,393
FTA Bus Rapid Transit Extension & Winnetka / Mason DeSoto Entrances	04/06/10	\$2,013,350
FHWA-Brahma Drive	03/26/10	\$18,269
P.E. Facilities - Pool Piping and Deck	02/01/10	\$907,015
P.E. Facilities - General	02/01/10	\$21,484,681
Fire Alarm Panel Update	01/15/10	\$204,933
Phase I Renovations - Fine Arts and Music	12/30/09	\$4,590,805
SMP - Remove & Replace Transite Pipes	11/24/09	\$442,693
Student Services Building	10/21/09	\$23,448,033
Animal Science Facilities	07/31/09	\$1,947,403
Temporary Village Expansion - Partitions	07/24/09	\$32,918
SLE - Student Community Center Great Hall Acoustics	07/12/09	\$143,822
Phase I Renovations - Faculty Office	06/22/09	\$3,062,681
Temporary Village Expansion - Electrical / Low Voltage	06/19/09	\$101,997
Exhibition & Events Center - Phase 1B	06/11/09	\$2,973,817
RWGPL - West Parking Lot	06/11/09	\$9,788
Campus Improvements - Utilities	05/01/09	\$24,721,476
RWGPL - Parking Lot 1	02/09/09	\$2,829,983
Waterless Urinals	11/21/08	\$70,398
Demolition of 20 Temporary Structures	11/01/08	\$415,210
RWGPL - East Parking Lot @ Exhibition / Ag Science	09/02/08	\$2,918,972
Temporary Village Expansion	09/02/08	\$2,941,141
Campus Improvements - Utilities Early Release Package	08/25/08	\$9,491,661
Infrastructure - Early Release Package - El Rancho Road	08/25/08	\$1,770,399
RWGPL Brahma Drive	08/25/08	\$2,167,517
Old Book Store Renovation	04/04/08	\$3,135,319
SMP - Underground Piping Replacement	03/07/08	\$386,271
Completed Projects Subtotal		\$187,783,215

Please note: project budgets include non-bond funding sources

Pierce College - Project List

Completed Projects (continued)

Project Name	Date Completed/ Anticipated Completion	Budget
RWGPL - Botanical Garden	07/27/07	\$271,365
SMP - Repair Hazardous Walkways	07/16/07	\$61,709
SMP - Campus System Clock Replacement	06/15/07	\$25,999
Temporary Facilities - Swing Space	04/11/07	\$598,343
Temporary Facilities - Relocation, Acquisition (Village)	04/09/07	\$8,901,802
Library	01/05/07	\$408,521
Maintenance and Operations Building - Above Ground Fuel Storage	07/31/06	\$94,892
SMP - Backflow Device Replacement	07/14/06	\$10,901
Demolition of Existing soils Labs	10/26/05	\$42,613
P.E. Facilities - Football/Soccer Scoreboard	06/22/05	\$127,086
Temporary Facilities - SMCI Trailers & Swing Space Utilities	04/15/05	\$757,273
Early Renovations - Corridor Upgrade	11/25/04	\$98,862
Child Development Center - Modifications	06/15/04	\$22,255
Temporary Facilities - Child Development	06/15/04	\$1,276,275
Phase I Renovations - Business Education - Cinema Lab	03/24/04	\$159,261
Exhibition & Events Center - Phase 1A	03/19/04	\$2,211,591
Student Store and Financial Aid Building	01/15/04	\$7,194,627
Early Renovations - Administration Building - Lobby	01/31/03	\$322,727
Campus-Wide Improvements - Fencing	11/01/02	\$287,712
Campus-Wide Improvements - Parking Lot 7	10/09/02	\$3,465,893
Exhibition & Events Center - Phase 1 Stalls	10/02/02	\$50,865
Demolition of Temporary Facilities	09/30/02	\$83,091
Completed Projects Total		\$214,256,878
Active Projects		
Infrastructure and Central Plant Extensions	12/23/14	\$9,516,944
Digital Arts and Media Building	12/23/14	\$52,617,861
Infrastructure - Campus-Wide Utilities Extensions	12/23/14	\$449,500
Green Technologies Building	08/01/14	\$56,301,111
SLE South of Mall-ADA/Landscaping/Technologies/Low Voltage	01/09/14	\$14,263,427
Expanded Automotive and New Technical Education Facilities	09/10/13	\$30,067,350
Active Projects Subtotal		\$163,216,193

Please note: project budgets include non-bond funding sources

Pierce College - Project List

Active Projects (continued)

Project Name	Date Completed/ Anticipated Completion	Budget
Phase II Renovations - Behavioral Science, Social Science, Mathematics, and English Buildings	12/03/12	\$9,256,207
SLE North of Mall-ADA/Landscaping/Technologies/Fire	12/03/12	\$13,477,973
Restrooms Renovations Campus	12/03/12	\$1,361,785
Phase II Renovations - Computer Science and Computer Learning	12/03/12	\$5,703,201
Library/Learning Crossroads Building	10/15/12	\$53,237,265
Mason Reroute	04/26/12	\$3,064,142
Horticulture/Animal Science Facility	04/16/12	\$18,144,586
Measure J Animal Science Facilities	03/31/12	\$494,548
Early Renovations - Theater Building - Performing Arts	12/21/11	\$1,373,296
Performing Arts Building ADA Improvements	12/21/11	\$9,786,128
Campus Center (Existing) - General	12/12/11	\$2,845,611
Phase II Renovations - Administration Building - Interior and Exterior	12/12/11	\$5,428,683
Maintenance and Operations Building - Central	12/01/11	\$1,412,241
New Maintenance and Operations Facility	12/01/11	\$17,256,958
Life Science, Chemistry, Physics Building	11/23/11	\$12,365,139
SLE Faculty Center/Campus Center	11/21/11	\$698,943
Stadium ADA Improvements	11/02/11	\$12,867,137
SLE Community Services/Agriculture Science Building Renovation	10/24/11	\$2,935,682
SMP - Irrigation Systems Replacement/Lot 5	08/12/11	\$501,648
Exhibition & Events Center - Phase 1B - Fence Relocation	05/31/11	\$1,015,573
SLE Temporary CDC Reuse	01/10/11	\$1,505,474
Landscape and Site Master Plan	10/29/10	\$11,301,426
Campus-Wide Improvements - Central Plant	09/15/10	\$8,274,810
SLE - College Services Building (CSB) Mailroom Relocation	09/10/10	\$1,094,656
Parking Lots and Roadways	N/A	\$3,817,599
Sustainable Landscape, Storm Water Mitigation & Campus Access	N/A	\$ 9,487,998
Active Projects Total		\$371,924,902

Pierce College - Project List

Planned Projects

Project Name	Date Completed/ Anticipated Completion	Budget
Campus Improvements - Traffic Mitigation	05/29/12	\$931,319
Off-site Traffic Mitigation	05/29/12	\$1,106,332
Planned Projects Total		\$2,037,651

Project Support

Campus Program Management	N/A	\$10,497,669
Campus Program Management - Asset Assessment and Move Management	N/A	\$777,730
Campus Program Management - Contingency	N/A	\$3,054,956
Campus Program Management - Election Costs - Prop A	N/A	\$138,833
Campus Program Management - Inspection and Testing	N/A	\$54,843
Campus Program Management - Legal services	N/A	\$988,326
Campus Program Management - Other Consulting Services	N/A	\$6,324,270
Campus Program Management - Performance/Financial Auditing Services	N/A	\$700,000
Campus Program Management - Project Management Services	N/A	\$18,049,202
Campus Program Management - Reimbursables	N/A	\$392,595
Campus-Wide Improvements - Aesthetic Architect	N/A	\$204,184
Land Acquisition	N/A	\$102,618
Master Planning	N/A	\$527,538
Master Planning - Campus-Wide Geotechnical Services	N/A	\$150,000
Master Planning - Environmental Impact Report (EIR)	N/A	\$990,155
Master Planning - Site Survey and Infrastructure Study	N/A	\$444,344
Project Support Total		\$43,397,263

Projects On-Hold/Cancelled

Agoura Satellite Center - Land Acquisition	N/A	\$7,574,884
Agricultural Education Center	04/26/13	\$5,709,723
Projects On-Hold/Cancelled Total		\$13,284,607
Grand Total		\$644,901,301

Los Angeles Southwest Project Highlights

Los Angeles Southwest Project Highlights



This project included a new stadium with 4,000 seats, new press box structure, restrooms, and concessions. Also included within the scope of this project was a Field House building, perimeter site improvements, and a parking structure. The stadium improvements included a new track and infield. The Field House building is approximately 19,460 square feet and includes offices for athletic coaches, men's and women's locker rooms, weight rooms, meeting rooms, restrooms and shower facilities.



The New Student Services Building is 67,266 square feet and has two stories. This building houses registration, EOPS, DSPS, Live Scan, and Community Services. It is also the location of the future bookstore.



This project includes construction of pedestrian walkways, parking areas, amphitheatre, surrounding hard/ soft landscaping, site lighting and signage on 16.7 acres of the campus.



The new Child Development Center is 22,056 square feet. This building includes the childcare center and child development/early childhood education classes.

Los Angeles Southwest College - Project List

Completed Projects

Project Name	Date Completed/ Anticipated Completion	Budget
CDC Water Softener & Abatement	05/26/10	\$72,599
Central Plant Security Upgrade	04/15/10	\$57,185
Site Improvements - Campus-Wide Perimeter Fence	09/30/09	\$1,133,774
Child Development Center - SMART Classrooms	07/31/09	\$192,686
Central Plant	06/24/09	\$14,228,089
Student Services Activities Center	04/06/09	\$25,674,346
Design-Build Athletic Field House, Stadium	03/18/09	\$21,996,730
Waterless Urinals	01/29/09	\$48,357
Fields & Courts Walking Track	01/23/09	\$839,747
Campus Security Facility	11/20/08	\$3,675,170
Fire Alarm Network Upgrade SMP	09/19/08	\$202,965
Design-Build Parking Structure, West Entry Drive and Parking Lot Facilities	08/25/08	\$14,436,169
Technical Education Center - Modernization	08/21/08	\$6,899,778
Northeast Quadrant-Landscape, Lighting, Signage & Palm Court (#3)	07/25/08	\$7,523,608
Campus Corner Sign	06/26/08	\$684,892
Demolition of Bungalows - For Design Build	04/30/08	\$86,833
Campus IT and Telephone System	04/15/08	\$2,037,224
Maintenance and Operation Facility	03/07/08	\$13,591,273
Campus Wide Security Cameras - Gymnasium	01/25/08	\$22,648
SSEC Fire Alarm & Fire Sprinkler	10/15/07	\$128,551
Demolition of Exist CDC Bldgs. A, B, C, D	08/30/07	\$69,798
Child Development Center	08/27/07	\$19,332,100
Student Services Building Roof Screenwall	01/09/07	\$126,688
Demolition of Bungalows - Interim Prkg Ph 1.2	11/28/06	\$140,828
RWGPL - Northeast Quadrant, Entry Plaza & Parking (#2)	10/30/06	\$3,312,378
Temporary Parking for Phase 1.1	09/20/06	\$26,250
PE Gym Acoustic/Sound System	06/15/06	\$443,896
Campus Wide Security Cameras	05/16/06	\$15,000
Demolition of Bungalows - Interim Parking Ph 1.1	05/09/06	\$286,269
Campus-Wide Improvements - Cox, Lecture Lab & PE Gym Concrete and Exterior Stairs Cleaning	03/28/06	\$14,700
Completed Projects Subtotal		\$137,300,531

Please note: project budgets include non-bond funding sources

Los Angeles Southwest College - Project List

Completed Projects (continued)

Project Name	Date Completed/ Anticipated Completion	Budget
Campus-Wide Improvements - Ozone Generators Replacement	03/27/06	\$15,000
Campus-Wide Improvements - Cox Building - Exterior Lighting Fixture Replacement	03/25/06	\$13,950
Campus-Wide Improvements - Fire Alarm Inspection & Certification	03/25/06	\$12,029
Campus-Wide Improvements - PE Gymnasium Exterior Painting	03/25/06	\$14,500
Campus-Wide Improvements - Student Services Education Center, Lecture Lab, & Tech Ed Restrooms Retrofit	03/25/06	\$5,491
Campus-Wide Improvements - Lecture Lab, Tech Ed, & Cox IT Infrastructure Wiring Upgrade	03/24/06	\$14,998
Campus-Wide Improvements - Lecture Laboratory Building Boiler Replacement	03/24/06	\$21,710
Campus Drinking Fountains	03/16/06	\$300
Demolition Service Station	02/03/06	\$166,530
Student Services, Education Center	12/23/05	\$16,066,191
Demo Bungalows for Interim Parking	08/29/05	\$252,017
Demolition - Utilities NE Quadrant (#1)	04/20/05	\$1,260,986
Land Acquisition	06/14/04	\$1,735,754
Lecture, Laboratory Building - Door Replacements	08/06/03	\$49,764
Cox Building - Little Theater	07/01/03	\$3,804
Cox Building - Fourth Floor	05/13/03	\$47,009
Completed Projects Total		\$156,980,564
Active Projects		
School of Math & Sciences	03/05/13	\$22,194,208
Cox Building Upgrade	02/12/13	\$34,210,020
Fitness and Wellness Center	01/30/13	\$15,388,068
Cox Building - Little Theater Upgrade	01/16/13	\$12,186,454
Landscape Improvements	12/27/12	\$3,029,404
Campus Wide Infrastructure Upgrades	11/28/12	\$7,216,143
Campus Wide Technology Upgrades	10/24/12	\$5,471,271
Campus-Wide Reclaimed Water	09/20/12	\$61,840
School of Arts and Humanities	04/23/12	\$30,630,339
Active Projects Subtotal		\$130,387,747

Please note: project budgets include non-bond funding sources

Los Angeles Southwest College - Project List

Active Projects (continued)

Project Name	Date Completed/ Anticipated Completion	Budget
School of Career & Technical Education	04/23/12	\$50,297,093
Northeast Quadrant Parking Structure	04/11/12	\$14,838,306
Campus Wide Security Upgrades	03/07/12	\$4,024,797
Campus-Wide Storm Water Collection System	11/30/11	\$917,820
School of English & Foreign Languages Modernization	11/15/11	\$3,461,494
School of Behavioral Science and Social Sciences Upgrades	11/01/11	\$5,931,950
Cal Trans Pony Wall	07/19/11	\$697,533
Site Improvements - Campus East Pump House & Fire Water Upgrade	05/31/11	\$6,265,375
Book Store	03/11/11	\$2,639,665
Cox Building - Elevator Modernization	11/24/10	\$1,465,578
Active Projects Total		\$220,927,358
Planned Projects		
Child Development Center Security Upgrade - Phase 1	N/A	N/A
Child Development Center Security Upgrade - Phase 2	N/A	N/A
Campus-wide Technology Upgrades - Phase 1	N/A	N/A
Project Support		
Site Improvements - Master	N/A	\$87
Bulk Purchase - Power tools	N/A	\$63
Bulk Purchase - Athletic/Fit Equipment	N/A	\$3
Bulk Purchase - Musical Instruments	N/A	\$274
Bulk Purchase - Child Development Center FF&E	N/A	\$10
DW-Scanning & Coding	N/A	\$336
Master Planning Update	N/A	\$1,097,743
Site Improvements - Develop Architectural Site Standards and Exterior LEED Points	N/A	\$246,344
Master Planning - Site Survey and Infrastructure Studies	N/A	\$413,719
Master Planning - Environmental Impact Report (EIR)	N/A	\$563,470
Campus Program Management - Asset Assessment and Move Management	N/A	\$1,508,208
Campus Program Management - Program Management Services	N/A	\$9,492,302
Campus Program Management - Project Management Services	N/A	\$14,133,870
Project Support Subtotal		\$27,456,429

Please note: project budgets include non-bond funding sources

Los Angeles Southwest College - Project List

Project Support (continued)

Project Name	Date Completed/ Anticipated Completion	Budget
Campus Program Management - Reimbursables	N/A	\$269,444
Campus Program Management - Legal Services	N/A	\$400,345
Campus Program Management - Performance/Financial Auditing Services	N/A	\$245,691
Campus Program Management - Other Consulting Services	N/A	\$5,889,186
Campus Program Management - Inspection and Testing	N/A	\$1,492
Campus Program Management - Election Costs - Prop A	N/A	\$46,695
Campus Program Management - Contingency	N/A	\$1,347,902
Project Support Total		\$35,657,184
Projects On-Hold/Cancelled		
Building Improvements - SSAC Food Court	N/A	\$17,849
Cox Building - Basement	N/A	\$135,783
Cox Building - Fire Alarm Replacement	N/A	\$47
Cox Building - Modernization	N/A	\$1,352,070
Cox Building - Student Lounge Conversion	N/A	\$593
Cox Building - Third Floor	N/A	\$16,000
Site Improvements - Normandie Campus Entrance	N/A	\$29,877
PE Fields and Courts	N/A	\$306,394
PE Gym	N/A	\$39,499
PE Gym Reroofing SMP Project	N/A	\$12,120
PE Gym, Pool, Bleachers	N/A	\$263,355
Renewable Energy - Carport	N/A	\$2,231,934
RWGPL-Palm Court Plz Hard/Softscape #4	N/A	\$93,165
Campus-Wide Improvements - Northeast Segment of the Campus	N/A	\$911,910
Campus-Wide Improvements - Southeast, Southwest and Northwest Segments of the Campus	N/A	\$9,555
Student Services Activities Center	N/A	\$806,916
Student Services Activities Cluster B	N/A	\$22,917
Swimming Pool Covering	N/A	\$69,947
Project On-Hold/Cancelled Total		\$6,319,931
Grand Total		\$419,885,037

Please note: project budgets include non-bond funding sources

Los Angeles Trade-Technical College Project Highlights

Los Angeles Trade-Technical College Project Highlights



The new South Campus includes the Technology Education Building, which is 70,546 square feet and the Student Services/Administration Building, which is 60,181 square feet.



This project relocated the auto ramp on the F Building from its current location to the southwest corner of F Building roof parking area. The result created an exit in a southerly direction onto Flower Street.

This project was necessary to complete the South Campus (Student Services and Technology Education Buildings and Parking Structure/Athletic Field).



The new Child Development Center has two stories and is 15,714 square feet. The facility accommodates 114 children.



The new parking structure has six levels and 800 parking spaces. It is located directly across the street from the college (south of Washington Boulevard, between Grand Avenue and Olive Street).

Los Angeles Trade-Technical College - Project List

Completed Projects

Project Name	Date Completed/ Anticipated Completion	Budget
Liberal Arts - Replace Theater Pneumatic Controls	05/25/10	\$319,912
Duct Cleaning	04/29/10	\$278,542
Demolition of Facilities/Temporary Parking along Grand Avenue	04/29/10	\$263,801
Campus-Wide Improvements - General	04/29/10	\$2,835,458
Liberal Arts Building - Refurbish Theater	03/30/10	\$64,514
Gymnasium - Replace Domestic Hot Water Boiler and Tank	01/14/10	\$266,456
South Campus	01/08/10	\$99,554,191
South Campus - Undergrounding of Overhead Utilities	01/08/10	\$587,445
Building E - Space Heating System	11/13/09	\$448,089
Campus-Wide Improvements - New Fuel Tanks	10/02/09	\$127,355
Child Development Center	09/01/09	\$10,603,577
Land Acquisition - East Campus	08/19/09	\$13,658,233
Math and Science Building - Repair HVAC Controls	07/29/09	\$1,539,666
Emergency Lighting, Fire Alarm and Security Systems - Electrical Site Distribution	07/16/09	\$293,591
Learning Resource Center and Library - Phase 1	05/29/09	\$59,810
Emergency Lighting, Fire Alarm and Security Systems - Campus Security Systems	05/21/09	\$433,172
Liberal Arts Building - Utility Tunnel Repair Phase 2	03/17/09	\$189,977
Construction Technology Building - Miscellaneous Finish Upgrades	03/17/09	\$672,943
Fashion and Fine Arts Building - Miscellaneous Finish Upgrade	03/17/09	\$1,314,853
Land Acquisition - Master	12/10/08	\$18,887,679
Upgrade Existing Chalkboards	11/18/08	\$6,525
Upgrade Existing Chalkboards	11/18/08	\$8,337
Gymnasium - Replace Boiler - Swimming Pool	08/13/08	\$278,412
Campus Improvements - Onsite Telecommunication Services	08/07/08	\$11,985
Auto, Metal Building - Structural Repairs Phase 2	07/24/08	\$1,709,745
Building E - Relocate Telephone System	06/19/08	\$8,920
RWGPL - F Ramp	06/16/08	\$4,548,605
Trade Technical Campus Improvements Underground Fuel Tanks Phase II	06/06/08	\$199,992
Completed Projects Subtotal		\$159,171,785

Please note: project budgets include non-bond funding sources

Los Angeles Trade-Technical College - Project List

Completed Projects (continued)

Project Name	Date Completed/ Anticipated Completion	Budget
Olive Street Parking	03/10/08	\$13,400,321
Liberal Arts - Renovation of Cosmetology Studios	10/18/07	\$150,000
Math and Science Building - Pumps and Others	06/26/07	\$100,262
Liberal Arts Building - Utility Tunnel Repair	03/02/07	\$548,243
Emergency Lighting, Fire Alarm and Security Systems - Information Technology (IT) Conduit Installation	01/15/07	\$226,632
South Campus - Demolition	12/06/06	\$901,378
Campus-Wide Improvements - Removal of Existing Fuel Tanks	11/28/06	\$127,954
Liberal Arts Building - Ceiling Mitigation Phase 2	09/28/06	\$7,000
Liberal Arts Building - Electrical Upgrade and Miscellaneous Work	01/17/06	\$24,070
Construction Technology Yard - Toilet Modular Facilities	01/11/06	\$478,698
Auto, Metal Building - Structural Upgrade	08/24/05	\$133,491
Auto, Metal Building - HVAC Upgrade and Hazardous Substance Removal	08/16/05	\$6,024,185
Construction Technology Building - General	08/20/03	\$80,881
Art and Culinary Arts Building - Phase 1	07/07/03	\$95,286
Auto, Metal Building - Reroofing	04/24/02	\$237,422
Completed Projects Total		\$181,707,608
Active Projects		
South Campus Athletic Field	08/14/15	\$7,724,780
Construction Technology Building	02/23/15	\$91,412,539
East Campus Parking Facility	02/23/15	\$25,204,936
Wellness Sports and Preventive Health Center	03/06/14	\$40,639,039
Performing Arts & Entertainment Center - Modernization	01/23/13	\$17,968,285
Learning Assistance Center/Library Renovation	11/02/12	\$54,433,921
Campus-Wide Information Technology Upgrade	07/25/12	\$20,661,087
Signage for Public Information	07/13/12	\$269,377
Math and Science Building - Install Additional Economizer	10/27/11	\$437,695
A-Building Restoration and Modernization	07/26/11	\$56,038,958
Re-grout and Seal Tiles in Restrooms	05/06/11	\$50,000
Active Projects Subtotal		\$314,840,617

Please note: project budgets include non-bond funding sources

Los Angeles Trade-Technical College - Project List

Project Name	Date Completed/ Anticipated Completion	Budget
Active Projects (continued)		
Campus-Wide Improvements General - Phase 2	02/24/11	\$5,525,034
Relocate Electronics Department in Building "K"	12/30/10	\$600,000
Land Acquisition @ East Campus- Phase 2	10/29/10	\$7,959,621
Fashion and Fine Arts Building - HVAC Upgrade	09/20/10	\$3,573,371
Emergency Lighting, Fire Alarm and Security Systems - General	09/14/10	\$722,952
Construction Technology Building - Boiler Retrofit/Replacement	09/13/10	\$169,088
Active Projects Total		\$333,390,683
Planned Projects		
Art and Culinary Arts Building - Phase 2	10/14/16	\$50,401,810
Fashion and Fine Arts Center "D" - Modernization	12/29/15	\$176,611
Transportation Technology-Renovation	07/22/14	\$2,565
Math & Science Building "K" Fourth Floor Renovation	09/02/13	\$1,096
RWGPL - Grand Avenue Enhancement Phase 1	11/19/12	\$837,657
Blue Line Station Extension	11/19/12	\$1,630,864
Grand Avenue Enhancement Phase 2	11/19/12	\$5,000,000
Upgrade Campus Main Electrical Distribution System	06/27/12	\$759,391
Planned Projects Total		\$58,809,994
Project Support		
Campus Program Management - Project Management Services	10/14/16	\$18,343,812
Campus Program Management - Asset Assessment and Move Management	08/31/11	\$1,056,189
Campus Program Management - Program Management Services	06/30/09	\$12,159,590
Campus Program Management - Legal Services	06/30/09	\$964,702
Campus Program Management - Performance/Financial Auditing services	06/30/09	\$278,043
Campus Program Management - Other Consulting Services	06/30/09	\$3,366,468
Campus Program Management - Reimbursables	05/29/09	\$162,671
Campus Program Management - Election Costs - Prop A	08/14/08	\$58,053
Master Planning - Environmental Impact Report (EIR)	08/31/05	\$395,953
Master Planning - Site Survey and Infrastructure Studies	05/21/04	\$358,796
Master Planning - Soil Testing	06/30/03	\$273,368
Project Support Subtotal		\$37,417,645

Please note: project budgets include non-bond funding sources

Los Angeles Trade-Technical College - Project List

Project Name	Date Completed/ Anticipated Completion	Budget
Project Support (continued)		
Waterless Urinals	N/A	\$295
Bulk Purchase - Power Tools	N/A	\$87
Bulk Purchase - Athletic/Fitness Equipment	N/A	\$4
Bulk Purchase - Musical Instruments	N/A	\$357
Bulk Purchase - Child Development Center FF&E	N/A	\$14
DW-Scanning & Coding	N/A	\$463
Master Planning	N/A	\$929,888
Project Support Total		\$38,348,753
Projects On-Hold/Cancelled		
Transportation and Accessibility Improvements - Onsite	N/A	\$41,806
Transportation and Accessibility Improvements - ADA Transition	N/A	\$125,938
Math and Science Building - Space Heating System	N/A	\$431,989
Math and Science Building - Renovation	N/A	\$15
Math and Science Building - ADA / Fire Life Safety Improvement	N/A	\$13,019
Liberal Arts Building - Grand Theater Roof	N/A	\$64,476
Learning Resource Center - Space Heating System	N/A	\$15,681
Gymnasium - General	N/A	\$1,239,249
Fashion and Fine Arts Building - ADA/Fire Life Safety Improvement	N/A	\$13,019
Construction Technology Building - Upgrade Toilet Facilities	N/A	\$223,566
Construction Technology Building - ADA Fire Life Safety Improvement	N/A	\$11,045
Building C - Space Heating System	N/A	\$46,386
Auto, Metal Building - Solar Photovoltaic System	N/A	\$11,439
Projects On-Hold/Cancelled Total		\$2,237,628
Grand Total		\$614,494,666

Please note: project budgets include non-bond funding sources

Los Angeles Valley College Project Highlights

Los Angeles Valley College Project Highlights



This new Allied Health/Science Center Building is approximately 90,636 square feet. The building houses the Earth Sciences, Nursing, Biology, Chemistry, Physics, Respiratory Therapy and Health Sciences.



The new Child Development Center is approximately 25,904 square feet and will replace the existing center, which will be demolished.



This Gym Complex project included renovation of the North Gym and South Gym with a new Disabled Students Programs & Services (DSPS) exercise room. Also included in this project is a 50 meter competition pool, six lane 25 yard training pool, 3 foot deep warm-up pool and 12'x8' pool equipment building (1,980 square feet).



This is the New Maintenance and Operations Shop and the College Sheriff's Station. The building is 26,452 square feet.

Los Angeles Valley College - Project List

Completed Projects

Project Name	Date Completed/ Anticipated Completion	Budget
RWGPL - Wayfinding and Site Furnishing - Phase 1	9/2/2009	\$931,428
Life Sciences Building	8/21/2009	\$2,387,778
Temporary Facilities - Library Relocation	6/19/2009	\$4,625,109
Campus-Wide Improvements - Central Plant/Utilities Infrastructure	5/8/2009	\$25,208,799
Motion Picture Building - TV Broadcasting Studio Expansion	2/13/2009	\$2,181,519
Waterless Urinals	1/30/2009	\$112,375
Humanities Building	10/24/2008	\$1,802,121
Planetarium Building	10/14/2008	\$2,995,686
Allied Health and Sciences Center	9/30/2008	\$69,141,092
Engineering Building	9/30/2008	\$1,804,919
Math and Science Building	9/30/2008	\$1,717,381
Campus Center Building - 2nd Floor - Phase 1	9/5/2008	\$474,060
Art Building - Renovation	9/5/2008	\$1,867,073
Music Building	9/5/2008	\$2,112,334
Theatre Arts Building	9/1/2008	\$4,958,448
Campus-Wide Improvements - IT Department	8/25/2008	\$3,885,735
Campus Center Building - 2nd Floor Classrooms	6/11/2008	\$937,856
Field House - Facilities (Track and Field Phase 2)	6/11/2008	\$56,660
Field House - Concession Stand & Restrooms	4/11/2008	\$2,560,315
Campus-Wide Improvements - Restrooms	11/28/2007	\$2,933,536
Business Journalism Building	9/28/2007	\$2,244,648
Temporary Facilities - Move Business Office From Campus Center	8/16/2007	\$562,014
Maintenance and Operations, Sheriff Station	5/16/2007	\$9,302,029
Behavioral Science Building	4/25/2007	\$997,359
Field House - Stadium Track and Practice Field	3/13/2007	\$6,024,871
RWGPL - Phase 1 Center Courtyard & Phase 1 Art Courtyard	12/12/2006	\$999,596
RWGPL - Phase 1 - Marquee	11/7/2006	\$325,750
Foreign Language Building	6/21/2006	\$1,236,156
Campus-Wide Improvements - 2004 Painting Project	6/21/2006	\$887,589
Completed Projects Subtotal		\$155,274,236

Please note: project budgets include non-bond funding sources

Los Angeles Valley College - Project List

Completed Projects (continued)

Project Name	Date Completed/ Anticipated Completion	Budget
Campus-Wide Improvements - Utilities Infrastructure	5/10/2006	\$127,087
RWGPL - Phase 1 Campus Landscaping Renovations	7/13/2005	\$73,999
Art Building - Gallery Ceiling	7/13/2005	\$155,826
Campus-Wide Improvements - Restrooms - Priority	4/20/2005	\$909,600
Campus Center Building - Elevator	6/21/2003	\$71,166
Completed Projects Total		\$156,611,914
Active Projects		
RWGPL - General	12/1/2011	\$6,884,710
Library and Learning Resource Center	5/15/2011	\$44,872,683
Retro-Commissioning Upgrades	10/31/2010	\$3,915,565
Family Resource Center	10/20/2010	\$1,367,020
Student Service Center	9/31/2010	\$26,883,819
Child Development Center	9/15/2010	\$15,533,518
Active Projects Total		\$99,457,315
Planned Projects		
Campus Center Building - Basement and 1st Floor	3/24/2014	\$ 2,715,293
Parking Lots/Internal Roads	1/20/2014	\$2,392,037
Campus Center Renovation (2nd Floor)	1/15/2014	\$3,150,000
Community Workforce Development Center/New Administration	12/31/2013	\$38,964,277
Campus Infrastructure	12/6/2013	\$5,859,450
Multi-Purpose Community Services Center	11/25/2013	\$13,915,139
Monarch Center (Student Union)	11/22/2013	\$30,909,941
New Planetarium Expansion	11/10/2013	\$4,760,658
Parking Structure	9/16/2013	\$31,850,257
Demolition - Bungalows 80-85	9/1/2013	\$250,342
Motion Picture Renovation	8/30/2013	\$1,026,229
Media and Performing Arts Center	2/20/2013	\$78,101,260
RWGPL - Phase 2 Courtyard, Monuments and Graphic	9/1/2012	\$905,956
Planned Projects Subtotal		\$214,800,839

Please note: project budgets include non-bond funding sources

Los Angeles Valley College - Project List

Planned Projects (continued)

Project Name	Date Completed/ Anticipated Completion	Budget
Athletic Training Facility	7/24/2012	\$28,301,095
Bungalow Upgrade	7/9/2012	\$3,154,049
Gym Building	11/14/2011	\$21,206,884
RWGPL- MTA Bus Station Extension	10/3/2011	\$3,829,918
RWGPL - Athletic Connector & Planetarium Garden	11/12/2012	\$904,972
RWGPL - Wayfinding Phase 2 & Library Border	4/6/2012	\$455,000
IT Department Phase 2	10/10/2011	\$1,200,000
Panorama City Education Site	N/A	\$31,740,822
Planned Projects Total		\$305,593,579
Project Support		
Campus Program Management - Recovered Contingency	N/A	\$1,455,098
Grand Total		\$563,117,906

Please note: project budgets include non-bond funding sources

West Los Angeles College Project Highlights

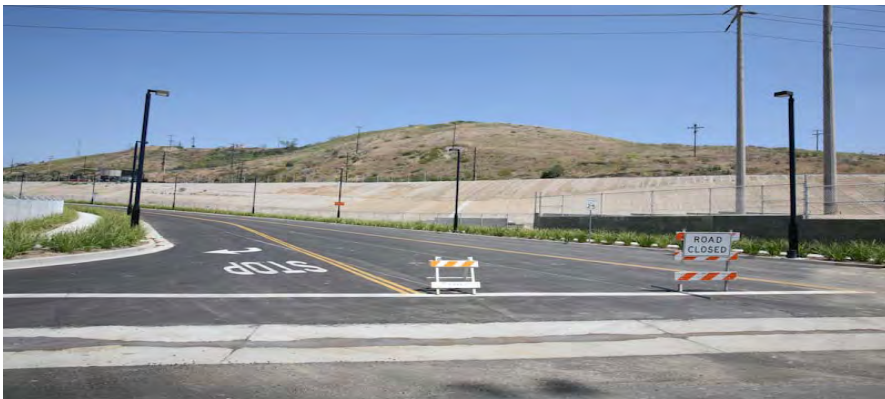
West Los Angeles College Project Highlights



This new Science & Math Building will provide new facilities for four departments and a number of shared lecture halls. The project is organized into two buildings, a Lab/Classroom building & a smaller Dental Hygiene/Faculty Office building. The area of the combined buildings is 85,220 square feet.



This new South Parking structure is a four story structure with a surface lot and has capacity of 1,132 cars. There is also a Photovoltaic (PV) farm located on the rooftop of this structure and it generates approximately 350kw.



This new Jefferson Entrance will provide a second access road to the campus as part of the Environmental Impact Report requirements.



This new enhanced pedestrian walkway includes bench and table areas for student and faculty use. It also serves as an access way to the South Parking Structure.

West Los Angeles College - Project List

Completed Projects

Project Name	Date Completed/ Anticipated Completion	Budget
Science and Math Building	7/1/2010	\$38,544,471
Second Access Road	4/1/2010	\$480,565
Campus Improvements - Call for Assistance Phones	12/31/2009	\$265,811
Campus Pedestrian Mall	12/31/2009	\$2,078,966
Emergency-Light Fire Sec	12/31/2009	\$31,155
Campus Improvements - Bleachers and Restroom and Locker Rooms	9/30/2009	\$1,099,101
Campus Improvements - Signage for Safety and Public Information	8/30/2009	\$72,359
Campus Improvements - Temporary Parking Lot A	2/20/2009	\$1,195
Campus Improvements - South Entry Plaza	1/21/2009	\$1,534,410
Parking Structure - Lot 8	12/1/2008	\$26,190,487
Campus Improvements - Soccer Field/Baseball Field/Parking	6/16/2008	\$623,065
Campus Improvements - Recycling Center and Irrigation System	5/28/2008	\$633,950
Tree Buffer Landscape	4/9/2008	\$244,143
Campus Improvements - Geriatrics Program	12/27/2007	\$67,144
Campus Improvements - Sheriff Renovation (Tenant Improvements)	11/15/2007	\$46,835
Waterless Urinals	5/31/2007	\$64,508
Campus Improvements - Street Improvements -New Service & Fire Road	5/31/2007	\$3,929,039
Campus Improvements - Sheriff Relocation	1/15/2007	\$48,298
Demolition of Temporary and /or Obsolete Facilities (Child Daycare Ctr)	10/19/2006	\$135,087
Campus Improvements - Child Care Center	10/19/2006	\$98,000
Land Acquisition	5/17/2006	\$4,546,374
Science Building - Renovation: Fume Hoods	4/18/2006	\$47,085
Campus Improvements - Athletic Complex	4/5/2006	\$4,701,534
Campus Improvements - Site and Lower Albert Vera Repairs	4/5/2006	\$427,971
Master Planning	2/23/2005	\$4,737,338
Campus Improvements - Campus Wide Aesthetic Design Standards	6/1/2004	\$75,772
Completed Projects Total		\$90,724,663
Active Projects		
Plant Facilities Center	11/30/2011	\$13,178,980
General Classroom	2/7/2011	\$9,101,271
Active Projects Subtotal		\$22,280,251

Please note: project budgets include non-bond funding sources

West Los Angeles College - Project List

Active Projects (continued)

Project Name	Date Completed/ Anticipated Completion	Budget
Student Services Building - General	2/7/2011	\$16,991,624
Campus Improvements - Student Services Entry Green	2/7/2011	\$579,514
Demolition	N/A	\$12,250
Campus Improvements - Grandstand and Restrooms	N/A	\$9,646
Temporary Facilities - Relocation, Acquisition - Campus	N/A	\$850,310
West LA Transportation Project	N/A	\$222,514
Campus Improvements	N/A	\$7,718
Active Projects Total		\$40,953,827
Project Support		
Campus Program Management - Other Consulting Services	N/A	\$1,877,237
Campus Program Management	N/A	\$423,378
Campus Program Management - Other Consulting Services - Moore	N/A	\$8,000
Campus Program Management - Other Consulting Services - 03	N/A	\$1,688,563
Campus Program Management - Other Consulting	N/A	\$40,626
Campus Program Management	N/A	\$39,425
Campus Program Management - Election Costs - Prop A	N/A	\$46,695
Campus Program Management - Contingency	N/A	\$39,543,110
Campus Program Management - Performance/Financial Auditing Services	N/A	\$220,485
Campus Program Management - Legal Services	N/A	\$1,024,622
Campus Program Management - Reimbursables	N/A	\$66,547
Campus Program Management - Project Management Services	N/A	\$15,753,345
Campus Program Management - Program Management Services	N/A	\$9,613,900
DW- Scanning & Coding	N/A	\$346
Master Planning - Soil Testing	N/A	\$15,237
Master Planning	N/A	\$5,940
Environmental Impact Report (EIR)	N/A	\$672,223
Master Planning	N/A	\$141,076
Master Planning - Environmental Impact Report (EIR)	N/A	\$1,129,877
Project Support Subtotal		\$72,310,632

Please note: project budgets include non-bond funding sources

West Los Angeles College - Project List

Project Support (continued)

Project Name	Date Completed/ Anticipated Completion	Budget
Master Planning -Site Survey & Infrastructure Studies	N/A	\$777,656
Student Services Building - Master	N/A	\$2,361,836
Campus Program Management - Asset Assessment and Move Management	N/A	\$457,400
Bulk Purchase - Power Tools	N/A	\$ 65
Bulk Purchase - Musical Instruments	N/A	\$275
Bulk Purchase - Athletic/Fitness Equipment	N/A	\$2
EIR (Temporary Haul Road)	N/A	\$907,018
Project Support Total		\$76,814,884
Projects On-Hold/Cancelled		
Campus Improvements - Site Furniture	N/A	\$71,583
Student Services Building	N/A	\$352,698
Temporary Facilities - Relocation, Acquisition - Turner	N/A	\$5,863
Career Education Renovation	N/A	\$320,499
Entertainment Media Arts	N/A	\$184,612
Plant Operations and Storage Facilities	N/A	\$140,790
RWGPL - Widen Stocker Road	N/A	\$60,327
Campus Improvements - Men's P.E. Building Renovations	N/A	\$178,762
Campus Improvements - IT Renovations	N/A	\$138,987
Campus Improvements - Main Campus Entry	N/A	\$17,785
Campus Improvements - Walkways, Demolition, Temporary Construction	N/A	\$23,850
Temporary Facilities - Relocation, Acquisition - Master	N/A	\$22,320
FA/CE/ATA Renovation	N/A	\$2,652,840
Mini CP Allied Health Watson Center & Future Projects	N/A	\$395,370
Heldman Learning Resource Center	N/A	\$4,228,106
Student Union	N/A	\$131,790
Campus Entry Gateway	N/A	\$3,821,904
Student Services Building - Photovoltaic	N/A	\$7,789
North Parking Structure and PV Farm	N/A	\$35,244,632
Campus Improvements - Utility Infrastructure	N/A	\$10,020,604
Projects On-Hold/Cancelled Subtotal		\$58,021,111

Please note: project budgets include non-bond funding sources

WEST LOS ANGELES COLLEGE

Projects On-Hold/Cancelled (continued)

Project Name	Date Completed/ Anticipated Completion	Budget
Technology Learning Center	N/A	\$ 32,130,506
Watson Center	N/A	\$20,299,652
Athletic Fields with Mitigations	N/A	\$410,806
Allied Health and Wellness	N/A	\$94,641,657
Projects On-Hold/Cancelled Total		\$205,503,732
Grand Total		\$413,997,106

Please note: project budgets include non-bond funding sources

Van de Kamp Project Highlights

Van de Kamp Project Highlights



This is a street view of the Van de Kamp Innovation Center (formerly known as the Van de Kamp Bakery Building) that was restored to maintain its historical elegance. The building is approximately 85,797 square feet.



This is a view of landscaping on the northeastern quadrant of the site.



This is the New Educational Building and it is approximately 47,000 square feet. The District is leasing the space to the Alliance College-Ready Public Schools during the day and college classes are held in the evening.



This is a rear view of the new Child Development Center at the Van de Kamp site.

Van de Kamp - Project List

Completed Projects

Project Name	Date Completed/ Anticipated Completion	Budget
Bakery Building	6/1/2010	\$22,456,330
Central Plant	1/18/2010	\$5,508,595
San Fernando Road Street Widening	1/8/2010	\$473,878
New Education Building	8/29/2009	\$25,294,255
Campus Wide Improvements	7/16/2009	\$66,013
RWGPL - Roadways, Walkways, Grounds and Parking Lots	8/2/2008	\$100,499
Temporary Facilities	3/29/2007	\$1,970
Abatement, Demolition and Infrastructure	10/21/2005	\$82,238
Demolition	12/15/2004	\$15,630
Completed Projects Total		\$53,999,408

Active Projects

Land Acquisition	N/A	\$5,021,541
------------------	-----	-------------

Project Support

Public Works	n/a	\$157
Bulk Procurement	n/a	\$46
Purchase of Power Tools	n/a	\$3
Bulk Purchase - Athletic	n/a	\$1
Bulk Purchase - Musical Instruments	n/a	\$96
Bulk Purchase - Child Development Center FF&E	n/a	\$8
DW-Scanning and Coding	n/a	\$258
Master Planning	n/a	\$285,555
Campus Program Management - Asset Assessment and Move Management	n/a	\$115,815
Campus Program Management - Program Management Services	n/a	\$2,061,472
Campus Program Management - Project Management Services	n/a	\$4,518,226
Campus Program Management - Legal Services	n/a	\$232,534
Campus Program Management - Performance/Finance Auditing Servcs	n/a	\$38,911
Campus Program Management - Other Consulting Services	n/a	\$833,993
Campus Program Management - Contingency	n/a	\$563,986
Waterless Urinals	n/a	\$165
Project Support Total		\$8,651,226

Grand Total **\$67,672,175**

Please note: project budgets include non-bond funding sources

District - Project List

Active Projects

Project Name	Date Completed/ Anticipated Completion	Budget
Educational Services Facility	N/A	\$9,000,000
Heath Careers Academy at County General	N/A	\$15,000,000
District Office Renovation	N/A	\$9,000,000
	Grand Total	\$33,000,000