

# District Citizens' Oversight Committee

## Propositions A/AA & Measure J

### Los Angeles Community College District



#### *Our Colleges:*

- ◆ East Los Angeles College (ELAC)
- ◆ Los Angeles City College (LACC)
- ◆ Los Angeles Harbor College (LAHC)
- ◆ Los Angeles Mission College (LAMC)
- ◆ Los Angeles Pierce College (LAPC)
- ◆ Los Angeles Southwest College (LASC)
- ◆ Los Angeles Trade-Tech College (LATTC)
- ◆ Los Angeles Valley College (LAVC)
- ◆ West Los Angeles College (WLAC)

## 2010-11 Annual Report

### About the District

The Los Angeles Community College District (LACCD) is the nation's largest community college district, covering a metropolitan area of 882 square miles and serving 36 cities in Los Angeles County. The LACCD is the fifth largest public agency in Southern California in terms of population and area served, ranking behind the Metropolitan Water District, the South Coast Air Quality Management District, the Metropolitan Transit Authority, and the County of Los Angeles. If the District were a U.S. state, it would be the 22nd largest in population, ranking behind Minnesota but ahead of Louisiana. Though it is now larger geographically than the Los Angeles Unified School District (LAUSD), it was once a subagency of the LAUSD. The nine colleges in LACCD encompass seven other unified or high school districts: Alhambra, Beverly Hills, Burbank, Culver City, Las Virgenes, Montebello and Palos Verdes.

## 2011-12 CURRENT COMMITTEE MEMBERS:

- Nancy Carson, *Chair, LAHC Representative*  
Dean of Academic Affairs, LAHC (Retired)
- Dr. Elliot Axelband, *Vice-Chair, WLAC Representative*  
Senior Engineer, RAND Corporation
- Donald Saguchi, *ELAC Representative*  
Vice President of Academic Affairs, ELAC (Retired)
- Marv Hoffman, *LACC Representative*  
Vice Chairman & FSO, NTS Engineering Services, Inc.
- Jose Rodriguez, *LAMC Representative*  
Principal Leader, Secondary Schools/Local District 2, LAUSD
- Donna Smith, *LAPC Representative*  
Principal, Chatsworth High School (Retired)
- Eva Holmes, *LASC Representative*  
School Administrator, LAUSD (Retired)
- Darryl Holter, *LATTC Representative*  
CEO, The Shammas Group
- Terry Anderson, *LAVC Representative*  
Attorney, Anderson & Associates
- Richard Slawson, *At-Large Representative*  
Executive Secretary, Los Angeles/Orange Counties Building & Construction Trades Council (Retired)
- Bob Courtney, *At-Large Representative*  
President, Courtney Property & Investments, Inc.
- David Rattray, *Business Representative*  
Sr. Vice President of Education & Workforce Development  
Los Angeles Chamber of Commerce
- Robert Schwartz, *Foundation Representative*  
Executive Director, Los Angeles City College Foundation
- David Gomez, *Labor Representative*  
Business Development Associate,  
IBEW Local 11 & NECA Los Angeles
- Ethel McClatchey, *Senior Representative*  
President, Emeritus Chapter, LA College Faculty Guild,  
AFT/1521
- Jaden Ledkins, *Student Representative*  
President, Associated Student Organization, LACC
- Daniel Swartz, *Taxpayer Representative*  
Principle, Quadrangle Development Company

## 2010-11 COMMITTEE MEMBERS:

- Reginald Byron Jones-Sawyer Sr.,  
*Chair, At-Large Representative*  
Director of Asset Management, City of Los Angeles
- Nancy Carson, *Vice Chair, LAHC Representative*  
Dean of Academic Affairs, LAHC (Retired)
- Philip A. Cohen, *ELAC Representative*  
Executive Vice President, Chief Operations Officer  
AHMC Healthcare Inc.
- Kurt Tennyson, *LACC Representative*  
Owner, Excel Maxillofacial Prosthetic Laboratory
- Dr. Yvonne Chan, *LAMC Representative*  
Principal, Vaughn Next Century Learning Center
- Donna Smith, *LAPC Representative*  
Principal, Chatsworth High School
- Henry Porter, *LASC Representative*  
Principle Building Inspector, City of Los Angeles (Retired)
- Mark Wilson, *LATTC Representative*  
Executive Director,  
Coalition for Responsible Community Development
- Harvey Berg, *LAVC Representative*  
Sole Practitioner, Berg Consulting Group
- Dr. Elliot Axelband, , *WLAC Representative*  
Senior Engineer, RAND Corporation
- David Rattray, *Business Representative*  
Sr. VP of Education & Workforce Development  
Los Angeles Chamber of Commerce
- Bob Courtney, *Foundation Representative*  
President, Courtney Property & Investments, Inc.
- Richard Slawson, *Labor Representative*  
Executive Secretary, Los Angeles/Orange Counties Building & Construction Trades Council
- Isa-Kae Meksin, *Senior Representative*  
Special Education Teacher  
Norwalk-La Mirada Unified School District
- Lisa Munoz, *Student Representative*
- Daniel Swartz, *Taxpayer Representative*  
Principle, Quadrangle Development Company

To the Los Angeles Community College District Community:

The District Citizens Oversight Committee (DCOC) offers this report to the diverse users of LACCD's colleges, satellites and facilities, to the taxpayers whose financial support makes possible the construction, renovation, upgrade, furnishing and equipping of college structures, to the students who seek their individual goals and dreams on the LACCD campuses, and to the local communities that support and benefit from the presence of the colleges in their neighborhoods.

This has been a year of significant achievement, both in terms of the construction of quality facilities (see summary on page 5 of this report) and the identification of problems with specific projects (see audits on page 7).

The DCOC, the Board of Trustees, Chancellor Daniel LaVista, and district and college administrators have all carefully assessed the articles published in the LA Times, various audits, reports from the Office of Inspector General and public comments, and have responded to the findings. Leadership and staffing changes have been made in the Facilities Planning and Development Department, and among college project managers and contractors. Some processes have been changed in Build LACCD and others will be made if necessary.

New procedures and policies have been put in place, such as the adoption of cost principles to determine allowable costs and preclude, or least minimize, cost and schedule overruns. A new, more comprehensive monthly report on the status of projects, including variances of budget costs and completion timelines is being adapted (see page 8 for a more complete listing of changes). The intent is to catch problems early and solve them quickly.

The DCOC itself has made changes to enable this committee of unpaid volunteers to more effectively identify successes and problems, and give recommendations to the District and the Board of Trustees. We are increasing our meetings from four to six a year, going bimonthly.

Two new subcommittees have been established, an executive committee to increase the efficiency of planning and committee processes, and an advisory committee to do research, study potential problems and issues of concern, and bring recommendations to the full DCOC. The subcommittees prepare reports and recommendations for consideration by the Board and the chancellor and facilitate meetings with them when necessary, make recommendations to the Executive Director of Facilities, Planning and Development, and evaluate information from LACCD and the individual colleges on the progress of campus projects.

More specific information is now given to the DCOC and made available to the public on the District website. With greater access, the DCOC now receives input more frequently from the Inspector General, bond counsel, college presidents and other resources. We are eagerly awaiting the report from the chancellor's Bond Program Review Panel.

Seven resolutions approved by the DCOC set in motion major procedural changes to increase the efficiency of the committee and enhance communication with the Board of Trustees. The resolutions established the subcommittees, instituted formal communication and scheduled meetings with the Board of Trustees, enhanced the review of current construction plans, created a comprehensive baseline data base, formalized procedures to bring recommendations and reports from the subcommittees, the colleges and individuals to the DCOC, and assured regularly scheduled interaction between the DCOC, the Board of Trustees, the District and college project managers, administrators and users.

Dr. LaVista has been a formidable and energetic partner and resource for the committee in seeking positive change. He regularly attends our meetings as do a representative from the Board of Trustees, the Deputy Chancellor, the District's Interim Executive Director of Facilities, Planning and Development and at least one of the college presidents.

The DCOC has held a special meeting to review the multiple audits and the recommendations.

Many of the above noted changes are part of the response process. We have carefully utilized resources such as the bond counsel to ensure compliance with Proposition 39. Deficiencies identified in the Moss-Adams audit have been corrected.

Please review this entire report, including the listing and description of each college's projects completed, in progress and planned, the costs involved and the remaining work to be done. Visit a campus near you, or any in the district, and view the exciting new buildings completed and those under construction. Consider the major upgrades in infrastructure completed. Look at the use of solar panels and other green energy technology as the campuses expand. If possible, obtain pictures or drawings of what the campuses looked like prior to the investment of your tax dollars. Talk with faculty and staff about how their ability to meet the needs of students has been expanded and improved.

Projects budgeted and part of college master plans, but not yet started, are being carefully reviewed and prioritized as to need and the cost of maintenance and operation in this tight fiscal environment.

The ultimate goal remains: To give taxpayers high quality learning institutions that respond to student and community needs and will do so for many years into the future. The LACCD DCOC welcomes input from the community. Our meeting schedule and website are noted on page 4 of this report. The committee is, in a timely fashion, replacing members that have completed their terms and anticipating active participation of all members. It is an honor to serve. If asked to participate on the district committee or a college oversight committee, please consider the request carefully.

Although the journey to the finish line for this \$6 billion construction effort has not always been smooth, Build LACCD continues to make significant progress, never wavering from the goal of creating modern, expanded campuses that will serve students for generations to come.

Thank you for the opportunity to serve.

Nancy C. Carson  
Chair, District Citizens Oversight Committee

Approved by the LACCD-DCOC on December 16, 2011



## Propositions A/AA and Measure J

### District Citizens' Oversight Committee:

The Board of Trustees for the Los Angeles Community College District formed the District Citizens' Oversight Committee (DCOC) in June 2001 to provide a vital link between the District and the community with respect to implementation of Proposition A funds for construction and modernization projects within the District. The Proposition A bond measure totaled \$1.245 billion. The voters subsequently approved two additional bonds: Proposition AA and Measure J. Proposition AA bond measure totaled \$980 million and Measure J bond measure totaled \$3.5 billion. The DCOC consists of seventeen representatives from the local communities. The DCOC members are appointed for a two year term and can be re-appointed for an additional term not to exceed two consecutive two year terms.



### Los Angeles Community College

#### District Board of Trustees:

**Miguel Santiago**, *President*

**Tina Park**, *First Vice President*

**Nancy Pearlman**, *Second Vice President*

**Kelly Candaele**

**Mona Field**

**Scott Svonkin**

**Steve Veres**

**Amber I. Barrero**, Student Trustee

#### Chancellor:

**Daniel J. LaVista**

### DCOC Regular Meetings

All meetings are open to the public.

The schedule for 2011-12 is:

**August 26, 2011**, 12pm-2pm—811 Wilshire Blvd., 3rd floor Hearing Room

**October 28, 2011** 12pm-2pm—811 Wilshire Blvd., 3rd floor Hearing Room

**December 16, 2011**, 12pm-2pm—811 Wilshire Blvd., 3rd floor Hearing Room

**February 24, 2012**, 12:00-2:00 PM—770 Wilshire Blvd., District Board Room

**April 27, 2012**, 12pm-2pm—770 Wilshire Blvd., District Board Room

**June 22, 2012**, 12pm-2pm—770 Wilshire Blvd., District Board Room

Please check the website for schedule changes:  
<http://www.laccdbuildsgreen.org/about-oversight.php>

## DCOC Members Roster for 2010-11:

- Dr. Philip Cohen, ELAC
- Kurt Tennyson, LACC
- Nancy Carson, LAHC
- Dr. Yvonne Chan, LAMC
- Donna Smith, LAPC
- Henry Porter, LASC
- Mark Wilson, LATTC
- Harvey Berg, LAVC
- Dr. Elliot Axelband, WLAC
- Reginald Byron Jones-Sawyer Sr., At-Large
- David Rattray, Business
- Robert Courtney, Foundation
- Richard Slawson, Labor
- Isa-Meksin, Seniors'
- Dan Swartz, Taxpayers'
- Lisa Munoz, Student

## DISTRICT MAP



## DISTRICT BOND PROGRAM FACTS

### Status of Projects:

- ⇒ 145 Projects are Completed
- ⇒ 34 Projects are in Construction
- ⇒ 47 Projects are in Design
- ⇒ 36 Projects are in Planning
- ⇒ 57 Project have not Started

### Budget Overview:

Total: \$6,194,093,172  
 Contracted: \$4,411,090,084  
 Expended: \$3,282,752,811

### There are 89 Leadership in Energy and Environmental Design (LEED) Projects:

- ◇ 18 in certification
- ◇ 16 in construction
- ◇ 39 in design/programming
- ◇ 16 USGBC LEED Certified
  - 8 Gold
  - 6 Silver
  - 2 Certified

## DCOC Purpose and Responsibilities

The DCOC will provide oversight ensuring that bond revenues are expended only for the construction, reconstruction, rehabilitation, or replacement of college facilities, including the furnishing and equipping of college facilities or the acquisition or lease of real property for college facilities. No bond revenues are expended for any teacher or administrative salaries or other college operating expenses. The DCOC members represent various segments of the local communities. The DCOC's role is to inform the public concerning the District's expenditure of revenues received from the sale of bonds as authorized by Propositions A/AA and Measure J. The committee will monitor the expenditures of the bonds and the progress of construction in completing the Colleges' Facilities Master Plans.



## Report Covers Fiscal Year 2010-11

This is the DCOC's formal annual report of Propositions A/AA and Measure J by the Citizens' Oversight Committee since its formation in June 2001. It is the intent of the District Citizens' Oversight Committee (DCOC) to issue reports annually, consistent with the requirements of Proposition 39.



## District Bond Program Audits, Reports and LACCD Responses

*The following audits were completed in 2010-11:*

- Bond Performance Audit—*Fiscal Year Ended June 30, 2010*
- 2010 Financial Performance Audit by KPMG
- California State Controller's Audit – *July 1, 2001, through December 31, 2010*
- Office of Inspector General, Van de Kamp Innovation Center Project Expenditure Review - *April 29, 2011*

*The reports can be found at <http://www.laccdbuildsgreen.org/about-oversight.php>.*

The District and the District Citizens' Oversight Committee are responding to these findings.





## **DCOC 2010-11 Year in Review**

Over the past year, the DCOC has actively engaged the District about the various issues that have been raised throughout this year. Below are some of the changes, recommendations and events that took place in 2010-11 to improve communication, transparency, and program accountability to the DCOC.

- ⇒ DCOC held a meeting at the Van de Kamp Satellite on July 8, 2010. During this meeting the District laid out the current plan for the site, the community members voiced their opinions about the future of the site, and the committee and community members were given a tour of the site.
- ⇒ DCOC requested that the District report successes and failures of the bond program as a regular agenda item at the DCOC meetings, which was agreed to by the District.
- ⇒ DCOC increased the frequency of its meetings from quarterly to bimonthly.
- ⇒ DCOC is now posting an audio recording of the meetings on their website, in addition to the agenda and minutes.
- ⇒ The DCOC formed an advisory subcommittee to research and investigate issues for the DCOC.
- ⇒ DCOC formed an executive subcommittee that meets quarterly with the District Board of Trustees.
- ⇒ The DCOC is now working closely with the District and has established more open communication which includes agenda setting meetings with the Chancellor and the Executive Director of Facilities Planning and Development.
- ⇒ The Inspector General has a standing agenda item at the DCOC meetings to present reports of their findings to the committee.
- ⇒ The District adopted Cost Principles to determine allowable costs for the bond program.
- ⇒ Based on the request of the DCOC, the dashboard reports will include a budget variance and schedule variance to show the difference between planned and actual construction data.
- ⇒ The District formed a Bond Program Review Panel to review the Building Program and upon completion of their review, the findings will be presented to the DCOC.
- ⇒ The Board of Trustees assigned a Board member to be a liaison to the DCOC.
- ⇒ The Chancellor assigned a college president to be a liaison to the DCOC.

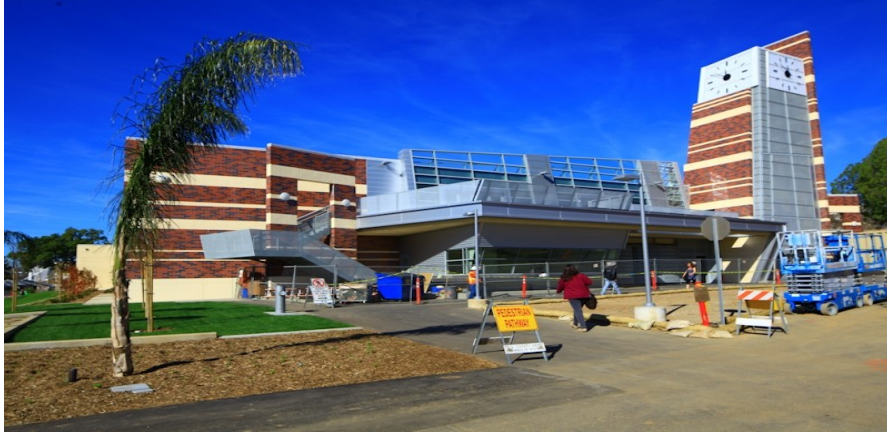
The DCOC is committed to representing the interests of the communities it serves and will continue their efforts to inform the public on the progress by the District to ensure compliance with the requirements of Proposition 39.

---

### **DCOC Contact Information**

To contact the Los Angeles Community College District regarding the Propositions A/AA and Measure J Bond Program or members of the DCOC, please contact Lillian Mazariegos at telephone 213.891.2081 or email at [MazariLD@email.laccd.edu](mailto:MazariLD@email.laccd.edu). The District Office is located at 770 Wilshire Boulevard, Los Angeles CA 90017.

# East Los Angeles College Project Highlights



This is the new Student Services Building. The building consolidates the Student Services Center to include Admissions, Records, the Career Center, Counseling, DSPS, the Enrollment Center, Financial Aid, Honors, International Students, the University Center, Matriculation and Assessment, Recruitment, Retail Outlet, Fiscal, EOP&S, and the Vice President of Student Services. This building is 50,000 square feet, 20,000 square feet was added. This project is complete.



This is the New Entry Plaza. The 120,000 square foot entry plaza provides a gathering space for students and a more accessible entry for disabled/handicapped students. The remainder of the plaza will be built after the Bailey Library is complete which is adjacent (north) to the Entry Plaza. This project is under construction.



This is the new E3/E5 (Multimedia) Building. The purpose of this project is to replace existing classrooms, labs, offices and meeting room space currently located in the existing E-3 and E-5 buildings. This building is 45,110 square feet. This project is complete.



This is the renovation and addition to the Bailey Library Building. The primary purpose of this project is to allow the college to increase its existing library square footage, as well as address the immediate need for current enrollment and future growth. This project will address the need to modernize its current space for advances in technology. The building will be 56,241 square feet (SF) (10,841 SF added + 45,400 SF renovated) upon completion. This project is currently under construction.

## East Los Angeles College - Project List/ Support Services

| Project Name  | Status       | Budget at Completion |
|---|--------------|----------------------|
| Parking Structure Lot 3                                     | Completed    | \$38,376,752         |
| Physical Plant Building                                     | Completed    | \$3,716,702          |
| Fitness Center  | Completed    | \$714,436            |
| Performing Arts Complex                                     | Completed    | \$99,198,807         |
| PE Fields   | Completed    | \$5,394,893          |
| Baum Center   | Completed    | \$23,251,765         |
| ELAC Stadium Modernization - Phase 1 (East End Terrace)     | Completed    | \$8,952,388          |
| Student Services Building E1                                | Completed    | \$39,369,006         |
| Academic Network Integrated Backbone                        | Completed    | \$4,302,490          |
| Technology Center   | Completed    | \$9,416,539          |
| Central Plant and Microturbines                             | Completed    | \$29,781,650         |
| Northeast Parking Resurfacing                               | Completed    | \$475,838            |
| E3 & E5 Replacement Building                                | Completed    | \$18,127,445         |
| Campus Student Center/Book Store Complex                    | Completed    | \$39,494,204         |
| Campus-Wide Infrastructure                                  | Completed    | \$30,835,882         |
| RWGPL   | Completed    | \$1,945,114          |
| Entry Plaza   | Completed    | \$5,429,130          |
| Campus-Wide Improvements                                    | Completed    | \$3,211,273          |
| Parking Structure Lot 4 /Facilities Maintenance (Northeast) | Construction | \$16,492,326         |
| Bailey Library Learning Center Modernization                | Construction | \$17,034,077         |
| Transit Center Accessibility                                | Design       | \$1,076,151          |
| Science Career & Mathematics Building                       | Design       | \$80,610,441         |
| Men's Baseball Field Renovation                             | Design       | \$5,287,153          |
| Health Careers Center/ Corporate Center for Health Career   | Design       | \$41,463,614         |
| Student Success and Retention Center                        | Design       | \$82,453,308         |
| Campus Marquees   | Design       | \$2,057,364          |
| Master Planning   | On Going     | \$944,149            |
| Campus Project Support                                      | On Going     | \$56,686,922         |
| Bulk Procurement  | On Going     | \$800                |
| <b>Total</b>  |              | <b>\$666,100,619</b> |



# Los Angeles City College Project Highlights



This is the Chemistry Building Renovation project. This project renovated the Chemistry building in order to provide instructional and office space. Improvements will include: ADA compliance upgrades, elevator upgrades, painting, interior wall reconstruction, and power/data upgrades. This project is complete.

---



This project is the new Green Technology Student Union building. This project will construct a new three story building (60,000 square feet) located on New Hampshire and Monroe, east of the parking structure. The new Student Union will provide space for the bookstore, food services, Associated Student Organization (ASO), computer lab/study areas and various other student activities. This project is under construction.

---



This is the Life Science Renovation Project. This project renovated the Life Science building for instructional and office space. Improvements will include: ADA compliance upgrades, elevator upgrades, painting, interior wall reconstruction, and power/data upgrades. This project is complete.

---



This project is the reconstruction of Jefferson Hall. The reconstruction provides a new configuration of classrooms, computer laboratories, and support spaces. The accessibility under ADA will be improved and hazardous materials will be abated. The utility systems (HVAC/electrical) will be upgraded to support technology use and enhance energy efficiency. Safety will be improved with a fire alarm upgrade that meets requirements for Division of the State Architect (DSA). This project is complete.



## Los Angeles City College - Project List/ Support Services

| Project Name  | Status       | Budget at Completion |
|---|--------------|----------------------|
| Maintenance Facilities                                | Completed    | \$535,339            |
| Student Lounge  | Completed    | \$555,553            |
| Parking Mitigation - I Pass                           | Completed    | \$539,520            |
| Food Lab Upgrade                                      | Completed    | \$788,671            |
| RWGPL - Central Plant                                 | Completed    | \$7,395,512          |
| Science and Technology Building                       | Completed    | \$43,209,575         |
| Franklin Hall Modernization                           | Completed    | \$24,800,845         |
| MLK Library - Learning Resource Center                | Completed    | \$23,409,970         |
| RWGPL - Site Utilities Infrastructure                 | Completed    | \$23,961,788         |
| Parking Structure                                     | Completed    | \$52,215,970         |
| Child Development Center                              | Completed    | \$15,845,700         |
| Roofing - Chavez, RadTech, Holmes, Theater            | Completed    | \$580,768            |
| Land Acquisition - South of Monroe Street Projects    | Completed    | \$26,803,863         |
| Temporary Facilities/3020 Wilshire                    | Construction | \$14,740,023         |
| Green Technology Student Union Building               | Construction | \$42,103,653         |
| Life Sciences Modernization                           | Construction | \$4,398,602          |
| Jefferson Hall Modernization                          | Construction | \$11,125,883         |
| Health, Fitness, PE Building                          | Construction | \$27,388,239         |
| Athletic Field  | Construction | \$2,661,193          |
| Chemistry Building Modernization                      | Construction | \$8,254,097          |
| South Gym Modernization                               | Design       | \$11,750,535         |
| Holmes Hall Modernization                             | Design       | \$8,684,297          |
| RWGPL - Landscaping/Hardscape Improvements            | Design       | \$20,092,390         |
| Clausen Hall Modernization                            | Design       | \$19,977,206         |
| Student Services Center                               | Design       | \$49,280,949         |
| Communications Building                               | Design       | \$662,619            |
| RWGPL - Red Line Pedestrian Corridor                  | Design       | \$6,397,616          |
| Campus-Wide Improvements                              | Design       | \$6,343,354          |
| Da Vinci Hall Modernization                           | Design       | \$19,552,442         |
| Learning Support Center                               | Planning     | \$25,429,112         |
| RWGPL - Central Plant Phase II                        | Planning     | \$3,861,000          |
| Physical Plant (M&O Building)                         | Planning     | \$8,345,284          |
| RWGPL - Street Improvements                           | Planning     | \$1,653,977          |
| Tennis Courts   | Planning     | \$631,211            |
| Demolition of Men's Gym, Pool, Maint & Misc Bungalows | Not Started  | \$3,469,800          |
| Cesar Chavez - Admin Building Modernization           | Not Started  | \$23,099,725         |
| Student Admissions Center                             | Cancelled    | \$1,109,227          |
| Family Life Science                                   | Cancelled    | \$112,331            |
| Theater Building                                      | Cancelled    | \$38,789             |
| Science and Technology II                             | Cancelled    | \$135,328            |
| Parking Structure - Student Admissions Center         | Cancelled    | \$751,541            |
| Cafeteria Building                                    | Cancelled    | \$17,054             |
| Master Planning                                       | On Going     | \$1,862,680          |
| Campus Project Support                                | On Going     | \$43,742,072         |
| Bulk Procurement                                      | On Going     | \$1,882              |
| <b>Total</b>  |              | <b>\$588,317,185</b> |

# Los Angeles Harbor College Project Highlights



This is the New West Parking Structure. This project includes the construction of a parking structure on the northwest corner of campus, replacing the northern portion of the existing parking lot 8. The parking structure will provide 926 spaces (approximately 350,000 square feet). This project is complete and in use.



This is the new Library Learning Resource Center project. This project removes the existing 50 year old 51,700 square foot building and replaces it with a new 43,009 square foot building. The facility will house the library, a learning assistance center, a writing lab, math lab, student computer lab, special programs and services, institutional research, a tutorial learning and staff development training facility. This project is under construction.



This is the new Science Complex. This project will construct a new three story Science Complex located in place of the old Technology building on campus. The new building will house all of the science programs and associated educational functions within a single facility. The project will provide the science program with facilities that have adequate safety, ventilation, and laboratory systems to provide a comprehensive curriculum. This project is under construction.



This project installed 97,000 square feet of photovoltaic carport canopies throughout student/staff parking lots on campus. The project allows the college to produce 2,260 kW of power. This project is complete.

## Los Angeles Harbor College - Project List/ Support Services

| Project Name                                      | Status       | Budget at Completion |
|---|--------------|----------------------|
| Keyless Entrance System                           | Completed    | \$400                |
| Campus Softball Field Modernization               | Completed    | \$203,301            |
| RWGPL   | Completed    | \$3,175,138          |
| Campus Improvements                               | Completed    | \$2,736,064          |
| Fine Arts Building                                | Completed    | \$1,608,657          |
| Student Cafeteria and Seahawk Center              | Completed    | \$91,600             |
| PE Facility                                       | Completed    | \$182,511            |
| Technology Instruction and Classroom Building     | Completed    | \$33,886,399         |
| Facilities Management and Operations Headquarters | Completed    | \$15,000,339         |
| Student Services Center                           | Completed    | \$22,215,667         |
| Northeast Academic Building                       | Completed    | \$31,289,093         |
| PE, Wellness Center                               | Completed    | \$22,058,695         |
| Track and Field                                   | Completed    | \$6,249,058          |
| Nursing Building                                  | Completed    | \$971,165            |
| Campus Parking Lot Reconstruction                 | Completed    | \$9,641,402          |
| West Parking Structure                            | Completed    | \$24,323,943         |
| Music Building                                    | Completed    | \$1,886,496          |
| General Classroom Building                        | Completed    | \$319,450            |
| Site Utilities Allowance                          | Completed    | \$12,550,754         |
| Central Plant                                     | Completed    | \$11,289,923         |
| New Child Development Center                      | Completed    | \$10,066,027         |
| Science Complex                                   | Construction | \$62,149,438         |
| New Learning Resource Center                      | Construction | \$27,724,748         |
| Marquee Modernization                             | Construction | \$2,086,178          |
| Campus Improvements - Restrooms                   | Construction | \$1,723,131          |
| Infrastructure/Land & Hardscape/Security          | Construction | \$27,130,296         |
| Temporary Facilities - Campus wide                | Design       | \$520,263            |
| Theater Drama Speech Building                     | Design       | \$15,716,145         |
| Student Union                                     | Design       | \$52,757,072         |
| Astronomy Modernization                           | Design       | \$3,021,336          |
| Nursing Modernization (Old Admin.Bldg.)           | Planning     | \$12,638,943         |
| Community Services Modernization                  | Planning     | \$7,999,437          |
| Campus ADA  | Planning     | \$941,502            |
| Existing Building Exterior Upgrade - Campus Wide  | Not Started  | \$529,753            |
| Master Planning                                   | On Going     | \$2,344,664          |
| Campus Project Support                            | On Going     | \$37,422,957         |
| Bulk Procurement                                  | On Going     | \$405                |
| <b>Total</b>                                      |              | <b>\$464,452,350</b> |



# Los Angeles Mission College



This is the arroyo that was part of the college landscaping project. The arroyo is a dry creek that fills and flows after significant periods of rain. The purpose is to control the drainage of water during the rainy season. This project is complete.



This is the Media Arts Center project. This project will include a performance theater, art gallery, art/painting rooms, faculty offices, graphics arts and computer graphic arts exhibition space. The completed building will have 53,400 square feet. This project is under construction.



This is the new Culinary Arts Institute which includes the Eagle Landing Bookstore. The program strives to become the premier culinary arts program in the California Community College system. This is the only program of its kind in the San Fernando Valley and combines the teaching/learning environment with services to the college population. This building is 74,921 square feet. This project is complete.



This is the new East Campus Complex. This project constructs a 98,694 square foot building that will provide space for health sciences, applied sciences, and technology teaching facilities. Health Science facilities combine a cluster of healthcare-related professions that include assisting, facilitating, or complementing the work of personnel in the health care field. Applied sciences and technology spaces provide the laboratory and teaching facilities with green technology courses. This project is under construction.



## Los Angeles Mission College - Project List/ Support Services

| Project Name                           | Status       | Budget at Completion |
|--|--------------|----------------------|
| Parking Structure A                    | Completed    | \$27,867,050         |
| Health and PE, Fitness Center          | Completed    | \$49,766,966         |
| Family and Consumers Studies Building  | Completed    | \$52,420,746         |
| Instruction Student Services Building  | Completed    | \$1,933,654          |
| Campus Center                          | Completed    | \$804,087            |
| Child Development Center               | Completed    | \$13,168,135         |
| Instructional Building                 | Completed    | \$5,556,003          |
| Campus Center Tenant Improvements      | Completed    | \$311,740            |
| Temporary Facilities - Sheriff Station | Completed    | \$2,245,754          |
| Campus-Wide Infrastructure             | Completed    | \$13,498,773         |
| RWGPL                                  | Completed    | \$4,019,563          |
| Temporary Facilities                   | Completed    | \$21,412             |
| Campus-Wide Improvements               | Completed    | \$1,039,779          |
| Land Acquisition                       | Completed    | \$9,982,668          |
| Land Acquisition - Church Property     | Completed    | \$5,729,045          |
| Land Acquisition at Hubbard Street     | Completed    | \$1,340,000          |
| Media Arts Center                      | Construction | \$33,046,187         |
| East Complex                           | Construction | \$86,542,476         |
| Campus Demand Side Management          | Construction | \$5,015,364          |
| Student Services/Admin Swing Space     | Design       | \$35,874,582         |
| Campus Modernization Phase 1           | Design       | \$17,071,520         |
| Campus Modernization Phase 2           | Design       | \$17,049,105         |
| Athletic Complex                       | Design       | \$25,220,817         |
| Learning Assistance Center             | Planning     | \$1,910,447          |
| Central Energy Plant                   | Not Started  | \$0                  |
| Parking Structure B                    | Cancelled    | \$0                  |
| Plant Facilities and Central Plant     | Cancelled    | \$1,534,622          |
| Master Planning                        | On Going     | \$4,202,168          |
| Campus Project Support                 | On Going     | \$33,319,285         |
| Bulk Procurement                       | On Going     | \$349                |
| <b>Total</b>                           |              | <b>\$450,492,297</b> |

# Pierce College Project Highlights



This project renovated the existing Business Education building (South of the Mall) including new windows, upgrades to basic electrical and plumbing systems, technology and communications, modifications to HVAC, new floor finishes, new paint interior and exterior, window treatments and ADA upgrades. This project is complete.



This is the Pedestrian Mall which was included in the Landscape and Site Master Plan project. The project included landscape, hardscape, lighting and irrigation to the North/South Axis of the Pedestrian Mall and the Hill Side Zone below the Performing Arts Building. The project also addressed site furniture, site amenities, signage and way finding and building identifications. Construction of a botanical garden in an existing 2-acre site was included. This project is complete.



This project is the construction of a new Facilities Maintenance and Operations Building. There will be 42,000 square feet of maintenance office shops building and approximately 85,000 square feet of a paved maintenance yard. This project is under construction.



This is the North Mall Phase II Renovations project. This project will provide renovations to the Computer Science, Behavioral Science, Mathematics, and English buildings on campus. The project will include new interior partitions, floor finishes, ceiling replacement/repair, restroom upgrades, ADA upgrades as needed, HVAC modifications, restroom renovations, electrical and telecommunications upgrades, interior and exterior paint, and hardware upgrades.

## Pierce College - Project List/ Support Services

| Project Name   | Status       | Budget at Completion |
|--|--------------|----------------------|
| P.E. Facilities  | Completed    | \$24,141,831         |
| College - Initiatives  | Completed    | \$386,271            |
| Center for the Sciences  | Completed    | \$62,589,824         |
| Student Store and Financial Aid Building   | Completed    | \$8,729,325          |
| Existing Library Renovation  | Completed    | \$408,521            |
| Child Development Center   | Completed    | \$14,510,301         |
| Business Education Renovation  | Completed    | \$3,160,960          |
| Faculty Offices Renovation   | Completed    | \$3,878,452          |
| Fine Art And Music Renovation  | Completed    | \$4,458,333          |
| Animal Science Facilities  | Completed    | \$2,527,601          |
| Campus Sheriff Station   | Completed    | \$598,794            |
| Exhibition and Events Center   | Completed    | \$6,819,765          |
| Student Services Building  | Completed    | \$23,439,572         |
| Old Book Store Renovation  | Completed    | \$3,256,970          |
| Landscape and Site Master Plan   | Completed    | \$10,782,921         |
| Central Plant  | Completed    | \$8,375,746          |
| Campus-Wide Infrastructure Phase I   | Completed    | \$33,661,577         |
| Campus-Wide Improvements - Parking Lots Phase I                                    | Completed    | \$9,441,694          |
| Temporary Facilities - Relocation, Acquisition (Pierce Village)                    | Completed    | \$12,807,165         |
| Campus-Wide Improvements - Roadways Phase I  | Completed    | \$9,115,394          |
| Stadium ADA Improvements   | Construction | \$11,416,508         |
| Life Science, Chemistry, Physics Building Renovation                               | Construction | \$12,686,557         |
| Administration Building Renovation   | Construction | \$6,965,637          |
| Computer Science And Computer Learning Renovation                                  | Construction | \$7,238,928          |
| Behavioral Science, Social Science, Mathematics, and English Buildings Renovation  | Construction | \$9,558,095          |
| Campus Center Renovation   | Construction | \$4,684,635          |
| New Maintenance and Operations Facility  | Construction | \$17,423,152         |
| New Library/Learning Crossroads Building   | Construction | \$52,590,598         |
| Parking Lots and Roadways Phase II   | Construction | \$8,889,510          |
| Theater/Performing Arts Building Renovation  | Design       | \$12,844,986         |
| Horticulture Facilities  | Design       | \$19,107,919         |
| Renovation of Agricultural Facilities  | Design       | \$3,324,843          |
| Photovoltaic Arrays for Parking Lots 1 and 8                                       | Design       | \$7,683,934          |
| Green Technologies Building  | Planning     | \$51,247,052         |
| Digital Arts and Media Building  | Planning     | \$47,723,870         |
| Student Learning Environments (SLE) – Classroom Modernization & Technology Upgrade | Planning     | \$16,685,685         |
| Expanded Automotive and New Technical Education Facilities                         | Planning     | \$31,581,617         |
| Campus-Wide Infrastructure Phase II  | Planning     | \$5,843,703          |
| Agricultural Education Center  | Not Started  | \$5,704,933          |
| Sustainable Landscape and Campus Accessibility Compliance                          | Not Started  | \$14,942,438         |
| West Central Plant   | Not Started  | \$5,434,322          |
| Technology Center  | Cancelled    | \$1,272,266          |
| Life Science and Natural Resources Management                                      | Cancelled    | \$6,556              |
| Land Acquisition - Agoura Property   | On Going     | \$7,568,096          |
| Master Planning  | On Going     | \$2,413,104          |
| Campus Project Support   | On Going     | \$40,918,985         |
| Bulk Procurement   | On Going     | \$550                |
| <b>Total</b>   |              | <b>\$648,849,496</b> |



# Los Angeles Southwest College



This is the new location for the Bookstore. This project renovated a portion of the ground floor within the existing Student Services Activities Center to provide space for the bookstore. The new location of the bookstore will strengthen the student body sense of community and provide for the merchandising of college oriented apparel and supplies for students, faculty and staff. This project is complete.

---



This is the Pump House and Fire Water Upgrade project. The project will construct a new pump station and add new fire and domestic water lines. This project is under construction.

---



This is the West Entry Drive and Parking Lot Facilities project. The West Entry Drive has 507 parking spaces, including site improvements to the existing West Entry Drive and the Parking Lot facilities in the northwest corner of the campus. The parking structure is a 128,982 square foot multi-level (3 levels + roof) structure. The parking structure consists of 412 parking spaces with another 95 spaces on grade, just north of the structure. This project is complete.

---



This is the modernization of the School of Math and Sciences building (formerly the Lecture Lab Building). The modernization of this building includes a student success center, SMART classrooms, updated electrical and plumbing systems, new technology and security systems, exterior stair improvements and a connection to the central plant.



## Los Angeles Southwest College - Project List/ Support Services

| Project Name  | Status      | Budget at Completion |
|---|-------------|----------------------|
| School of Behavioral and Social Sciences            | Completed   | \$22,697,372         |
| Student Services Activities Center                  | Completed   | \$32,305,266         |
| PE Fields   | Completed   | \$1,146,141          |
| Athletic Field House, Stadium                       | Completed   | \$21,887,069         |
| School of English & Foreign Languages Modernization | Completed   | \$10,358,037         |
| Child Development Center                            | Completed   | \$20,561,089         |
| Maintenance and Operation Facility                  | Completed   | \$13,495,225         |
| Central Plant                                       | Completed   | \$14,195,425         |
| West Entry Drive and Parking Lot Facilities         | Completed   | \$14,436,169         |
| Campus Corner Sign                                  | Completed   | \$883,340            |
| Design Build - East and West Sides                  | Completed   | \$3,665,315          |
| RWGPL   | Completed   | \$11,777,853         |
| Campus-Wide Improvements                            | Completed   | \$1,296,446          |
| Land Acquisition - Campus Corner Sign               | Completed   | \$1,703,836          |
| Cox Building  | Design      | \$50,848,366         |
| School of Math & Sciences (Lecture Lab)             | Design      | \$29,155,843         |
| School of Career & Technical Education              | Design      | \$24,194,532         |
| School of Arts and Humanities                       | Design      | \$30,602,710         |
| Northeast Quadrant Parking Structure                | Design      | \$14,428,582         |
| Fitness and Wellness Center                         | Design      | \$18,224,266         |
| Campus Wide Technology Upgrades                     | Planning    | \$4,898,755          |
| Campus Wide Security Upgrades                       | Planning    | \$2,236,047          |
| Health Academy Building                             | Not Started | \$23,091,214         |
| Campus Wide Infrastructure Upgrades                 | Not Started | \$14,081,736         |
| Renewable Energy                                    | Cancelled   | \$1,934              |
| Master Planning                                     | On Going    | \$2,294,094          |
| Campus Project Support                              | On Going    | \$33,651,005         |
| Bulk Procurement                                    | On Going    | \$349                |
| <b>Total</b>  |             | <b>\$418,118,016</b> |

# Los Angeles Trade-Tech College



This is the Renovate and Modernize Building A project. The modernization will include interior/exterior paint, ceilings, restrooms, floors and infrastructure. The exterior will be restored to its original look. This is the only pre-1930's building that will be renovated and modernized. This project is under construction.



This is the Learning Assistance Center Renovation project. The modernization of this building as a complete resource center consolidates scattered program functions into a single area, enhancing the educational process. Currently programs identified with a complete Learning Resource Center are spread across three separate buildings on campus. This project is under construction.



This is a rendering of the Construction Trade Building. This project will construct a new building on property acquired by the college, located east of Grand Avenue and South 21st Street. The building will support offerings in construction, design and manufacturing programs. This project is in the design phase.



This is a rendering of the East Parking Structure. This project will construct an above grade parking structure on the corner of South Grand Avenue and East 23rd Street. The structure will accommodate parking for approximately 1,000 cars. This project is in DSA review phase.

## Los Angeles Trade-Tech College - Project List/ Support Services

| Project Name                                       | Status       | Budget at Completion |
|--|--------------|----------------------|
| South Campus                                       | Completed    | \$100,779,305        |
| Auto, Metal Building                               | Completed    | \$12,177,580         |
| Construction Technology Building                   | Completed    | \$1,955,341          |
| Gymnasium  | Completed    | \$1,595,385          |
| Building C   | Completed    | \$56,195             |
| Building E   | Completed    | \$551,439            |
| Olive Street Parking                               | Completed    | \$13,403,996         |
| Transportation and Accessibility Improvements      | Completed    | \$187,277            |
| Child Development Center                           | Completed    | \$10,893,117         |
| Land Acquisition - East Campus                     | Completed    | \$34,087,712         |
| Land Acquisition - South Campus                    | Completed    | \$18,826,872         |
| Learning Resources Center                          | Construction | \$37,377,025         |
| Liberal Arts Building                              | Construction | \$62,375,787         |
| Math and Science Building                          | Design       | \$4,989,276          |
| Construction Trades Center                         | Design       | \$87,601,571         |
| East Parking Structure                             | Design       | \$20,358,747         |
| Performing Arts Center                             | Design       | \$12,902,338         |
| Demand Side Energy Optimization                    | Design       | \$1,820,252          |
| Art and Culinary Arts Building                     | Planning     | \$33,829,748         |
| Campus-Wide Infrastructure                         | Planning     | \$10,868,736         |
| Campus-Wide Improvements                           | Planning     | \$38,801,987         |
| Re-grout and Seal Tiles in Restrooms               | Not Started  | \$4,955              |
| South Campus Single Level Parking & Athletic Field | Not Started  | \$5,594,011          |
| Fashion and Fine Arts Building                     | Not Started  | \$38,413,452         |
| RWGPL  | Not Started  | \$11,859,310         |
| Wellness Center                                    | On Hold      | \$327,836            |
| Master Planning                                    | On Going     | \$1,643,384          |
| Campus Project Support                             | On Going     | \$38,280,793         |
| Bulk Procurement                                   | On Going     | \$461                |
| <b>Total</b>                                       |              | <b>\$601,563,888</b> |



# Los Angeles Valley College



This is the new Student Services Center. The building is 31,854 square feet and provides space for Financial Aid, Counseling, Admissions & Records, Business Offices, Personal Development Classrooms, Matriculation, EOPS, Student Outreach, ASU and VPSS. This project is complete.



This is the Student Services Center Annex project that bid with the Student Services Center project above. This building is 12,324 square feet and includes a Career Transfer Center, an Assessment Center, offices, DSPS, a Student Assistance Center, a Placement Center and a Transfer Center. This project is complete.



This is the new Library/Learning Assistance Center. This project will construct a 92,922 square foot building. This building replaces the current library/learning facility that is undersized and antiquated in terms of the present and future needs of the college. This project is under construction.



This is the Solar Energy Parking Lot and Internal Roads project. The project is comprised of the photovoltaic panels for Lots C, D, M&O and the Parking Lots/Internal Roads Parking Lot D. There is 1,022.14 kWdc (4,172 PV Panels) total for this project and it is divided across the parking lots. The division is as follows: Lot C = 51.45 kWdc = 210 PV Panels, Lot D = 816.34 kWdc = 3,332 PV Panels and M&O Lot = 154.35 kWdc = 630 PV Panels. This project is under construction.

## Los Angeles Valley College - Project List/ Support Services

| Project Name  | Status       | Budget at Completion |
|---|--------------|----------------------|
| Allied Health and Sciences Center                           | Completed    | \$73,773,815         |
| Campus Improvement - Central Plant/Utilities Infrastructure | Completed    | \$26,708,100         |
| Maintenance and Operations, Sheriff Station                 | Completed    | \$8,777,472          |
| Sciences Building   | Completed    | \$1,627,534          |
| Planetarium Building Modernization                          | Completed    | \$2,432,810          |
| Engineering Building  | Completed    | \$1,703,528          |
| Math and Science Building                                   | Completed    | \$1,550,587          |
| Humanities Building   | Completed    | \$1,746,949          |
| Art Building  | Completed    | \$2,414,396          |
| Music Building  | Completed    | \$1,962,449          |
| Gym Building  | Completed    | \$22,793,989         |
| Admin Building  | Completed    | \$478,827            |
| Child Development Center                                    | Completed    | \$16,712,225         |
| Family Resource Center                                      | Completed    | \$2,140,181          |
| Field House   | Completed    | \$8,169,581          |
| Campus-Wide Restrooms                                       | Completed    | \$2,588,154          |
| Student Service Center                                      | Completed    | \$26,945,493         |
| Business Journalism Building                                | Completed    | \$1,919,668          |
| Foreign Language Building                                   | Completed    | \$1,165,326          |
| Behavioral Science Building                                 | Completed    | \$960,008            |
| Motion Picture Building                                     | Completed    | \$3,561,541          |
| Theatre Arts Building                                       | Completed    | \$3,215,026          |
| RWGPL   | Completed    | \$10,397,752         |
| Campus Improvement - IT Department                          | Completed    | \$4,371,580          |
| Library and Learning Resource Center                        | Construction | \$39,477,543         |
| MTA Bus Station Extension                                   | Construction | \$2,989,634          |
| Media and Performing Arts Center                            | Design       | \$85,830,782         |
| Campus-Wide Improvements - Campus Safety                    | Design       | \$1,690,677          |
| Athletic Training Facility-Baseball Stadium Bleacher        | Design       | \$29,541,516         |
| Multi-Purpose Community Services Center                     | Design       | \$20,728,023         |
| Monarch Center (Student Union)                              | Design       | \$35,047,492         |
| Parking Structure   | Design       | \$20,338,124         |
| Campus Center Building                                      | Planning     | \$5,406,669          |
| Community Workforce Development Center/New Administration   | Planning     | \$43,225,398         |
| Campus-Wide Improvements - Upgrade                          | Planning     | \$5,519,232          |
| Sustainable Mall  | Planning     | \$3,118,040          |
| New Planetarium Expansion                                   | Planning     | \$5,209,080          |
| Campus Infrastructure                                       | Planning     | \$5,853,834          |
| Parking Lots/Internal Roads                                 | Not Started  | \$6,391,214          |
| Business Renovation (for Env Ctr/AHS/EMS)                   | Not Started  | \$0                  |
| Temporary Facilities  | Not In Use   | \$0                  |
| Land Acquisition - Panorama City Education                  | On Going     | \$32,084,294         |
| Master Planning   | On Going     | \$10,398,230         |
| Campus Project Support                                      | On Going     | \$49,474,089         |
| Bulk Procurement  | On Going     | \$546                |
| <b>Total</b>  |              | <b>\$630,441,408</b> |



# West Los Angeles College



This is the new Student Services building. This is a four-story building (approximately 45,000 square feet). The project provided for consolidation of all student services. The new facility will accommodate Admissions & Records, Counseling, Health Services, EOP&S, DSP&S and International Students departments. The building will include the bookstore and food services areas. Many of the administrative offices will be in this location. This project is under construction.



This is the new General Classroom building. This project constructed a new four-story building (approximately 44,604 square feet) located north of the Child Development Center. The building will provide classroom, faculty office and support space for the Liberal Arts program including Administration of Justice, Economics, History, Political Science, Psychology, Sociology, Public Safety and Language Arts. This project is under construction.



This is the Bleachers and Restrooms project which was an expansion of the Athletic Fields project. This project included new bleachers with seating for 1500 spectators. It also included restrooms and a concession stand to enhance the physical education area for future sporting events. The project is complete.



This is a rendering of the new Technology Learning Center. The project will construct a seven-story (approximately 62,800 GSF) building south of the Science and Math Complex. The facility will accommodate the campus Information Technology hub (data center), a digital library, classrooms, the President's office and the Academic Affairs Office. The project site is being prepared for construction.



## West Los Angeles College - Project List/ Support Services

| Project Name                           | Status       | Budget at Completion |
|--|--------------|----------------------|
| Science and Math Building              | Completed    | \$65,549,320         |
| Heldman Learning Resource Center       | Completed    | \$4,262,876          |
| Parking Structure - Lot 8              | Completed    | \$27,813,526         |
| RWGPL - Landscape/Hardscape            | Completed    | \$7,528,919          |
| Campus Improvements - Infrastructure   | Completed    | \$504,412            |
| Campus Improvements - Athletic Complex | Completed    | \$8,730,629          |
| College Boulevard - Second Access Road | Completed    | \$14,980,073         |
| Land Acquisition - 10100 Property      | Completed    | \$47,616,383         |
| General Classroom                      | Construction | \$29,084,740         |
| Central Plant                          | Construction | \$17,669,589         |
| Student Services Building              | Construction | \$37,802,144         |
| Allied Health and Wellness             | Design       | \$21,453,688         |
| Watson Center                          | Design       | \$6,018,265          |
| Technology Learning Center             | Design       | \$57,497,423         |
| Career Education                       | Not Started  | \$2,265,609          |
| Physical Education & Dance             | Not Started  | \$7,480,236          |
| Watson Center 2                        | Not Started  | \$0                  |
| Plant Facilities Center - FMO          | On Hold      | \$3,253,804          |
| North Parking Structure and PV Farm    | On Hold      | \$12,618,458         |
| Campus Entry Gateway                   | On Hold      | \$578,525            |
| Master Planning                        | On Going     | \$7,838,772          |
| Campus Project Support                 | On Going     | \$33,914,147         |
| Bulk Procurement                       | On Going     | \$355                |
| <b>Total</b>                           |              | <b>\$414,461,893</b> |

# Satellites and Multicampus

**LACCD VAN DE KAMP INNOVATION**



**ELAC FIRESTONE FACTORY BUILDING**



## Satellite and Multi-Campus - Summary

| Project Name                             | Status       | Budget at Completion |
|--|--------------|----------------------|
| LACCD Van de Kamp Innovation Campus      | Completed    | \$91,842,856         |
| ELAC Firestone Factory Building          | Active       | \$208,795,892        |
| District 770 HQ                          | Construction | \$50,774,904         |
| Health Careers Academy at County General | Planning     | \$13,761,468         |
| Mission College - Sunland/Tujunga        | TBD          | \$25,000,000         |
| Valley College - Burbank                 | TBD          | \$5,000,000          |
| West College - LAX                       | TBD          | \$40,000,000         |
| Southwest Museum                         | Cancelled    | \$0                  |
| <b>Total</b>                             |              | <b>\$435,175,120</b> |

## Van de Kamp Innovation Campus - Project List/Support Services

| Project Name                      | Status    | Budget at Completion |
|-----------------------------------|-----------|----------------------|
| New Educational Building          | Completed | \$26,083,954         |
| Central Plant                     | Completed | \$5,663,226          |
| San Fernando Road Street Widening | Completed | \$482,166            |
| Bakery Building                   | Completed | \$38,507,807         |
| Land Acquisition—Northeast        | Completed | \$6,838,675          |
| Land Acquisition                  | Completed | \$5,136,686          |
| Educational Center Status         | Cancelled | \$187,489            |
| Master Planning                   | On Going  | \$285,555            |
| Campus Project Support            | On Going  | \$8,657,147          |
| Bulk Procurement                  | On Going  | \$153                |
| <b>Total</b>                      |           | <b>\$91,842,858</b>  |

## ELAC - Firestone Factory Building - Project List/Support Services

| Project Name                | Status    | Budget at Completion |
|-----------------------------|-----------|----------------------|
| Firestone Site Improvements | Planning  | \$130,451,542        |
| Land Acquisition Ameron     | Completed | \$58,799,458         |
| Master Planning             | On Going  | \$1,294,125          |
| Campus Project Support      | On Going  | \$18,263,562         |
| Bulk Procurement            | On Going  | \$152                |
| <b>Total</b>                |           | <b>\$208,808,839</b> |



# College Project Central Services

## College Project Central Services - Program Holding/Suspense Account

| Project Name                     | Status | Budget at Completion |
|----------------------------------|--------|----------------------|
| Program Holding/Suspense Account | Active | \$7,997,950          |
| <b>Total</b>                     |        | <b>\$7,997,950</b>   |

## College Project Central Services - Owner Controlled Insurance Program (OCIP)

| Project Name                  | Status | Budget at Completion |
|-------------------------------|--------|----------------------|
| OCIP - City                   | Active | \$4,551,149          |
| OCIP - East                   | Active | \$10,135,600         |
| OCIP - Harbor                 | Active | \$6,544,608          |
| OCIP - Storm Water            | Active | \$811,459            |
| OCIP - ADA Compliance         | Active | \$2,134,005          |
| OCIP - Health Careers Academy | Active | \$509,053            |
| OCIP - Southgate              | Active | \$3,800,692          |
| OCIP - Mission                | Active | \$6,509,535          |
| OCIP - Pierce                 | Active | \$9,837,208          |
| OCIP - Escrow Deposit         | Active | \$23,685,990         |
| OCIP - Southwest              | Active | \$6,268,818          |
| OCIP - Trade                  | Active | \$7,517,997          |
| OCIP - Valley                 | Active | \$8,888,954          |
| OCIP - Prop A/AA              | Active | \$20,636,762         |
| OCIP - West                   | Active | \$6,052,925          |
| <b>Total</b>                  |        | <b>\$117,884,755</b> |

## College Project Central Services - Recycling

| Project Name          | Status | Budget at Completion |
|-----------------------|--------|----------------------|
| Recycling - City      | Active | \$869,154            |
| Recycling - East      | Active | \$1,009,793          |
| Recycling - Harbor    | Active | \$683,013            |
| Recycling - Southgate | Active | \$65,922             |
| Recycling - Mission   | Active | \$640,028            |
| Recycling - Pierce    | Active | \$889,200            |
| Recycling - Southwest | Active | \$865,478            |
| Recycling - Trade     | Active | \$784,237            |

## College Project Central Services - Recycling Cont.

| Project Name       | Status | Budget at Completion |
|--------------------|--------|----------------------|
| Recycling - Valley | Active | \$913,073            |
| Recycling - West   | Active | \$1,341,150          |
| <b>Total</b>       |        | <b>\$8,061,048</b>   |

## College Project Central Services - Furniture, Fixtures and Equipment (FF&E)

| Project Name       | Status | Budget at Completion |
|--------------------|--------|----------------------|
| FF & E - City      | Active | \$6,128,690          |
| FF & E - East      | Active | \$9,466,636          |
| FF & E - Harbor    | Active | \$3,081,195          |
| FF & E - Southgate | Active | \$3,450,252          |
| FF & E - Mission   | Active | \$3,878,338          |
| FF & E - Pierce    | Active | \$7,491,239          |
| FF & E - Southwest | Active | \$3,450,405          |
| FF & E - Trade     | Active | \$4,658,437          |
| FF & E - Valley    | Active | \$4,394,383          |
| FF & E - West      | Active | \$4,556,844          |
| <b>Total</b>       |        | <b>\$50,556,419</b>  |

## College Project Central Services - Legal/Audit

| Project Name                         | Status | Budget at Completion |
|--------------------------------------|--------|----------------------|
| Legal/Audit - City                   | Active | \$4,081,931          |
| Legal/Audit - East                   | Active | \$4,531,047          |
| Legal/Audit - Harbor                 | Active | \$2,943,917          |
| Legal/Audit - ADA Compliance         | Active | \$840,074            |
| Legal/Audit - Warranty Program       | Active | \$123,061            |
| Legal/Audit - Anti-Graffiti          | Active | \$75,015             |
| Legal/Audit - Health Careers Academy | Active | \$200,448            |
| Legal/Audit - Southgate              | Active | \$2,000,328          |
| Legal/Audit - Storm Water            | Active | \$319,428            |
| Legal/Audit - Whole Building         | Active | \$146,146            |
| Legal/Audit - Mission                | Active | \$2,952,837          |
| Legal/Audit - Pierce                 | Active | \$4,324,177          |

## College Project Central Services - Legal/Audit Cont.

| Project Name            | Status | Budget at Completion |
|-------------------------|--------|----------------------|
| Legal/Audit - Southwest | Active | \$2,801,905          |
| Legal/Audit - Trade     | Active | \$3,957,423          |
| Legal/Audit - Valley    | Active | \$3,973,673          |
| Legal/Audit - West      | Active | \$2,800,872          |
| <b>Total</b>            |        | <b>\$36,072,282</b>  |

## College Project Central Services - Asset Management

| Project Name  | Status | Budget at Completion |
|---|--------|----------------------|
| Asset Management - City   | Active | \$3,622,098          |
| Asset Management - East   | Active | \$5,319,011          |
| Asset Management - Harbor   | Active | \$1,601,898          |
| Asset Management - Southgate  | Active | \$1,994,539          |
| Asset Management - Mission  | Active | \$2,270,233          |
| Asset Management - Pierce   | Active | \$4,243,592          |
| Asset Management - Southwest  | Active | \$2,851,857          |
| Asset Management - Trade  | Active | \$2,796,331          |
| Asset Management - Valley   | Active | \$2,648,807          |
| Asset Management - West   | Active | \$2,553,438          |
| SAP Computerized Maintenance Management System  | Active | \$10,500,000         |
| PVJOBS - Outreach for Small Local and Emerging, PLA, Internships, and Apprenticeships | Active | \$46,250,000         |
| <b>Total</b>  |        | <b>\$86,651,805</b>  |

## College Project Central Services - Move Management

| Project Name                | Project Name | Budget at Completion |
|-----------------------------|--------------|----------------------|
| Move Management - City      | Active       | \$7,244,196          |
| Move Management - East      | Active       | \$10,638,021         |
| Move Management - Harbor    | Active       | \$3,203,796          |
| Move Management - Southgate | Active       | \$3,989,079          |
| Move Management - Mission   | Active       | \$4,540,466          |
| Move Management - Pierce    | Active       | \$8,487,185          |
| Move Management - Southwest | Active       | \$4,055,058          |
| Move Management - Trade     | Active       | \$5,798,039          |



## College Project Central Services - Move Management Cont.

| Project Name             | Status | Budget at Completion |
|--------------------------|--------|----------------------|
| Move Management - Valley | Active | \$5,297,613          |
| Move Management - West   | Active | \$5,106,877          |
| <b>Total</b>             |        | <b>\$58,360,330</b>  |

## College Project Central Services - Program Management

| Project Name                                | Status  | Budget at Completion |
|---|---------|----------------------|
| Program Management - City                   | Active  | \$6,764,472          |
| Program Management - East                   | Active  | \$7,519,708          |
| Program Management - Harbor                 | Active  | \$4,912,131          |
| Program Management - ADA Compliance         | Pending | \$0                  |
| Program Management - Anti-Graffiti          | Pending | \$0                  |
| Program Management - Energy                 | Pending | \$0                  |
| Program Management - Health Careers Academy | Pending | \$0                  |
| Program Management - Southgate              | Active  | \$3,354,045          |
| Program Management - Warranty Program       | Pending | \$0                  |
| Program Management - Whole Building         | Pending | \$0                  |
| Program Management - Storm Water            | Pending | \$0                  |
| Program Management - Mission                | Active  | \$4,827,323          |
| Program Management - Pierce                 | Active  | \$7,670,910          |
| Program Management - Southwest              | Active  | \$4,838,969          |
| Program Management - Trade                  | Active  | \$6,855,655          |
| Program Management - Valley                 | Active  | \$6,618,891          |
| Program Management - West                   | Active  | \$5,158,249          |
| Program Management - June 2012 - Dec 2016   | Active  | \$78,500,000         |
| <b>Total</b>                                |         | <b>\$137,020,353</b> |

## College Project Central Services - Project Management

| Project Name                   | Status | Budget at Completion |
|--------------------------------|--------|----------------------|
| Project Management - City      | Active | \$40,138             |
| Project Management - East      | Active | \$44,622             |
| Project Management - Harbor    | Active | \$29,059             |
| Project Management - Southgate | Active | \$19,909             |
| Project Management - Mission   | Active | \$28,645             |

## College Project Central Services - Project Management Cont.

| Project Name                   | Status | Budget at Completion |
|--------------------------------|--------|----------------------|
| Project Management - Pierce    | Active | \$118,907            |
| Project Management - Southwest | Active | \$28,714             |
| Project Management - Trade     | Active | \$40,686             |
| Project Management - Valley    | Active | \$39,275             |
| Project Management - West      | Active | \$566,885            |
| <b>Total</b>                   |        | <b>\$956,842</b>     |

## College Project Central Services - Specialty Consulting

| Project Name                     | Status | Budget at Completion |
|----------------------------------|--------|----------------------|
| Specialty Consulting - City      | Active | \$6,104,343          |
| Specialty Consulting - East      | Active | \$6,854,768          |
| Specialty Consulting - Harbor    | Active | \$4,363,292          |
| Specialty Consulting - Southgate | Active | \$2,536,907          |
| Specialty Consulting - Mission   | Active | \$4,456,908          |
| Specialty Consulting - Pierce    | Active | \$5,849,215          |
| Specialty Consulting - Southwest | Active | \$4,042,615          |
| Specialty Consulting - Trade     | Active | \$5,990,754          |
| Specialty Consulting - Valley    | Active | \$5,909,144          |
| Specialty Consulting - West      | Active | \$4,221,422          |
| <b>Total</b>                     |        | <b>\$956,842</b>     |

# Districtwide Initiatives

## Districtwide Initiatives - Energy

| Project Name                       | Status | Budget at Completion |
|------------------------------------|--------|----------------------|
| Renewable Energy - Harbor          | Active | \$21,988,070         |
| Renewable Energy - Pierce          | Active | \$17,250,289         |
| Renewable Energy - Owner's Reserve | Active | \$10,889,007         |
| Renewable Energy - City            | Active | \$6,621,770          |
| Renewable Energy - 770 HQ          | Active | \$118,659            |
| Renewable Energy - Districtwide    | Active | \$13,806,906         |
| Renewable Energy - East            | Active | \$10,013,308         |
| Renewable Energy - Mission         | Active | \$6,925,692          |
| Renewable Energy - Northeast       | Active | \$1,543,500          |
| Renewable Energy - Southwest       | Active | \$9,098,041          |
| Renewable Energy - Trade           | Active | \$13,723,378         |
| Renewable Energy - Valley          | Active | \$3,630,336          |
| Renewable Energy - West            | Active | \$4,541,890          |
| <b>Total</b>                       |        | <b>\$120,150,846</b> |

## Districtwide Initiatives - Americans with Disabilities Act (ADA) Compliance

| Project Name                     | Status | Budget at Completion |
|----------------------------------|--------|----------------------|
| ADA Compliance - District 770 HQ | Active | \$18,279             |
| ADA Compliance - Mission         | Active | \$4,534,604          |
| ADA Compliance - Southwest       | Active | \$1,801,384          |
| ADA Compliance - Trade           | Active | \$8,976,181          |
| ADA Compliance - West            | Active | \$8,104,048          |
| ADA Compliance - City            | Active | \$3,570,963          |
| ADA Compliance - East            | Active | \$13,797,337         |
| ADA Compliance - Harbor          | Active | \$3,566,137          |
| ADA Compliance - Owner's Reserve | Active | \$4,560,955          |
| ADA Compliance - Pierce          | Active | \$6,200,056          |
| ADA Compliance - Southgate       | Active | \$88,827             |
| ADA Compliance - Valley          | Active | \$13,277,599         |
| ADA Compliance - Van De Kamp     | Active | \$482,498            |
| <b>Total</b>                     |        | <b>\$68,978,868</b>  |



## Districtwide Initiatives - Technology

| Project Name                           | Status | Budget at Completion |
|--|--------|----------------------|
| Distance Education Collaboration       | Active | \$2,500,000          |
| Group Messaging/ Portal/ Student email | Active | \$1,750,000          |
| Identity Management                    | Active | \$1,500,000          |
| Network Security and Management        | Active | \$1,662,923          |
| SIS Product and Implementation         | Active | \$14,500,000         |
| Training (technology related)          | Active | \$7,500,000          |
| E-communication and Remote Access      | Active | \$400,000            |
| Interactive Mapping and Signage        | Active | \$2,000,000          |
| Media Lab Enhancement                  | Active | \$1,600,000          |
| One card System and Monitoring         | Active | \$6,000,000          |
| PC Virtualization                      | Active | \$2,000,000          |
| SIS Consulting Services                | Active | \$3,604,700          |
| Server Virtualization and Data Storage | Active | \$6,000,000          |
| Technology Coordinators                | Active | \$9,599,999          |
| Video Conferencing                     | Active | \$2,250,000          |
| CMMS and Building Management interface | Active | \$6,000,000          |
| Connect LACCD Network                  | Active | \$41,750,000         |
| Enterprise Data Storage                | Active | \$1,000,000          |
| Enterprise Smart Classroom Support     | Active | \$5,000,000          |
| Help Desk/ Knowledge Management        | Active | \$500,000            |
| IT Program Management                  | Active | \$9,536,000          |
| <b>Total</b>                           |        | <b>\$126,653,622</b> |

## Districtwide Initiatives - Anti-Graffiti Program

| Project Name                            | Status  | Budget at Completion |
|---|---------|----------------------|
| Anti-Graffiti Program - City            | Active  | \$72,173             |
| Anti-Graffiti Program - Harbor          | Active  | \$218,514            |
| Anti-Graffiti Program - Owner's Reserve | Pending | \$0                  |
| Anti-Graffiti Program - Southgate       | Active  | \$35,807             |
| Anti-Graffiti Program – Trade           | Active  | \$162,046            |
| Anti-Graffiti Program - West            | Active  | \$80,009             |
| Anti-Graffiti Program - East            | Active  | \$212,723            |
| Anti-Graffiti Program - Mission         | Active  | \$51,508             |

## Districtwide Initiatives - Anti-Graffiti Program Cont.

| Project Name                      | Status | Budget at Completion |
|-----------------------------------|--------|----------------------|
| Anti-Graffiti Program - Pierce    | Active | \$107,258            |
| Anti-Graffiti Program - Southwest | Active | \$134,406            |
| Anti-Graffiti Program - Valley    | Active | \$70,621             |
| <b>Total</b>                      |        | <b>\$1,145,065</b>   |

## Districtwide Initiatives - Warranty Program

| Project Name                       | Status  | Budget at Completion |
|------------------------------------|---------|----------------------|
| Warranty Program - Mission         | Active  | \$470,605            |
| Warranty Program - Southgate       | Active  | \$326,686            |
| Warranty Program - Valley          | Active  | \$645,298            |
| Warranty Program - West            | Active  | \$468,898            |
| Warranty Program - City            | Active  | \$659,519            |
| Warranty Program - East            | Active  | \$735,956            |
| Warranty Program - Harbor          | Active  | \$477,432            |
| Warranty Program - Owner's Reserve | Pending | \$0                  |
| Warranty Program - Pierce          | Active  | \$747,746            |
| Warranty Program - Southwest       | Active  | \$471,743            |
| Warranty Program - Trade           | Active  | \$1,109,921          |
| Warranty Program - Van De Kamp     | Active  | \$19,547             |
| <b>Total</b>                       |         | <b>\$6,133,351</b>   |

## Districtwide Initiatives - Whole Building

| Project Name                     | Status  | Budget at Completion |
|----------------------------------|---------|----------------------|
| Whole Building - Harbor          | Active  | \$927,973            |
| Whole Building - Southgate       | Active  | \$635,232            |
| Whole Building - Valley          | Active  | \$1,254,235          |
| Whole Building - Mission         | Active  | \$1,361,089          |
| Whole Building - Owner's Reserve | Pending | \$0                  |
| Whole Building - Pierce          | Active  | \$1,453,460          |
| Whole Building - Southwest       | Active  | \$916,814            |
| Whole Building - Trade           | Active  | \$1,298,805          |
| Whole Building - City            | Active  | \$1,281,853          |

## Districtwide Initiatives - Whole Building Cont.

| Project Name                 | Status | Budget at Completion |
|------------------------------|--------|----------------------|
| Whole Building - East        | Active | \$1,424,738          |
| Whole Building - Van De Kamp | Active | \$27,469             |
| Whole Building - West        | Active | \$911,403            |
| <b>Total</b>                 |        | <b>\$11,493,071</b>  |

## Districtwide Initiatives - Stormwater

| Project Name                 | Status | Budget at Completion |
|------------------------------|--------|----------------------|
| Stormwater - City            | Active | \$124,279            |
| Stormwater - Mission         | Active | \$1,861,732          |
| Stormwater - Pierce          | Active | \$184,308            |
| Stormwater - Trade           | Active | \$143,916            |
| Stormwater - Van De Kamp     | Active | \$535                |
| Stormwater - West            | Active | \$143,661            |
| Stormwater - East            | Active | \$348,781            |
| Stormwater - Harbor          | Active | \$77,431             |
| Stormwater - Owner's Reserve | Active | \$17,732,842         |
| Stormwater - Southgate       | Active | \$4,996              |
| Stormwater - Southwest       | Active | \$186,332            |
| Stormwater - Valley          | Active | \$2,186,003          |
| <b>Total</b>                 |        | <b>\$22,994,816</b>  |





---

## Acronyms and Abbreviations

ADA: Americans with Disabilities Act  
ASO: Associated Student Organization  
ASU: American School and University  
CMMS: Computerized Maintenance Managing System  
DCOC: District Citizen's Oversight Committee  
DSA: Division of State Architect  
DSP&S: Disabled Student Program and Services  
Env Ctr/ AHS/EMS: Environmental Center/Allied Health and Science/Energy Management System  
EOPS: Extended Opportunities Program and Services  
FF&E: Furniture, Fixtures and Equipment  
FMO: Facilities, Maintenance and Operations  
GSF: Gross Square Feet  
HQ: Headquarters  
HVAC: Heating, Ventilation and Air Conditioning  
IT: Information Technology  
KW: Kilowatts  
LAUSD: Los Angeles Unified School District  
LEED: Leadership in Energy and Environmental Design  
OCIP: Owner Controlled Insurance Program  
PE: Physical Education  
PV: Photovoltaic  
RWGPL: Roadway, Walkway, Grounds, Parking Lots  
SF: Square Feet  
SIS: Student Information System  
SLE: Student Learning Environment  
USGBC: United States Green Building Council  
VPSS: Vice Presidents of Student Services

ELAC: East Los Angeles College  
LACCD: Los Angeles Community College District  
LACC: Los Angeles City College  
LAHC: Los Angeles Harbor College  
LAMC: Los Angeles Mission College  
LAVC: Los Angeles Valley College  
LAPC: Los Angeles Pierce College  
LASC: Los Angeles Southwest College  
LATTC: Los Angeles Trade Tech College  
WLAC: West Los Angeles College