

# LOS ANGELES COMMUNITY COLLEGE DISTRICT

## PROPOSITIONS A/AA & MEASURE J - 2011-2012 ANNUAL REPORT



# District Citizens' Oversight Committee

### ABOUT THE DISTRICT

The Los Angeles Community College District (LACCD) serves approximately 250,000 students a year in 36 cities across an area of 882 square miles. LACCD is, by many measures, the largest community college district in the United States. The LACCD is composed of nine comprehensive colleges and a central office, which together employ roughly 6,200 full-time and part-time faculty, and more than 8,000 full-time and part-time administrative and support staff, including about 3,000 part-time student workers. An elected, seven-member Board of Trustees, serving four-year terms, governs the LACCD. One student trustee, selected by the students, serves a one-year term beginning on June 1st of every year. Over the past 83 years, the nine colleges combined have served more than three million students.

### OUR COLLEGES:

- ◆ EAST LOS ANGELES COLLEGE (ELAC)
- ◆ LOS ANGELES CITY COLLEGE (LACC)
- ◆ LOS ANGELES HARBOR COLLEGE (LAHC)
- ◆ LOS ANGELES MISSION COLLEGE (LAMC)
- ◆ LOS ANGELES PIERCE COLLEGE (LAPC)
- ◆ LOS ANGELES SOUTHWEST COLLEGE (LASC)
- ◆ LOS ANGELES TRADE-TECH COLLEGE (LATTTC)
- ◆ LOS ANGELES VALLEY COLLEGE (LAVC)
- ◆ WEST LOS ANGELES COLLEGE (WLAC)



For additional information, please visit our website at <http://www.laccdbuildsgreen.org/about-oversight.php>

## **2012-13 CURRENT COMMITTEE MEMBERS:**

- NANCY CARSON, **CHAIR, LAHC REPRESENTATIVE**, DEAN OF ACADEMIC AFFAIRS, LAHC (RETIRED)
- DR. ELLIOT AXELBAND, **VICE-CHAIR, WLAC REPRESENTATIVE**, SENIOR ENGINEER, RAND CORPORATION
- DONALD SAGUCHI, **ELAC REPRESENTATIVE**, VICE PRESIDENT OF ACADEMIC AFFAIRS, ELAC (RETIRED)
- DAVID AMBROSE, **LACC REPRESENTATIVE**, THE WALT DISNEY COMPANY, STRATEGIC PHILANTHROPY & COMMUNITY ENGAGEMENT
- ROBERT ARIAS, **LAMC REPRESENTATIVE**, PRESIDENT, COMMUNITIES IN SCHOOLS (CIS) GREATER LOS ANGELES
- DONNA SMITH, **LAPC REPRESENTATIVE**, PRINCIPAL CHATSWORTH HIGH SCHOOL (RETIRED)
- EVA HOLMES, **LASC REPRESENTATIVE**, SCHOOL ADMINISTRATOR, LAUSD (RETIRED)
- MARK WILSON (APPOINTED 7/24/12), **LATTC REPRESENTATIVE**, EXECUTIVE DIRECTOR, COALITION FOR RESPONSIBLE COMMUNITY DEVELOPMENT
- TERRY ANDERSON, **LAVC REPRESENTATIVE**, ATTORNEY, ANDERSON & ASSOCIATES
- BOB COURTNEY, **AT-LARGE REPRESENTATIVE**, PRESIDENT, COURTNEY PROPERTY & INVESTMENTS INC.
- RICHARD SLAWSON, **AT-LARGE REPRESENTATIVE**, EXECUTIVE SECRETARY, LOS ANGELES/ORANGE COUNTIES BUILDING & CONSTRUCTION TRADES COUNCIL (RETIRED)
- DAVID RATTRAY, **BUSINESS REPRESENTATIVE**, SR. VICE PRESIDENT OF EDUCATION & WORKFORCE DEVELOPMENT, LOS ANGELES CHAMBER OF COMMERCE
- STUART LAFF, **FOUNDATION REPRESENTATIVE**, ASSOCIATE PRINCIPAL, ROTTET STUDIO
- DAVID GOMEZ, **LABOR REPRESENTATIVE**, BUSINESS DEVELOPMENT ASSOCIATE, IBEW LOCAL 11 & NECA LOS ANGELES
- ETHEL McCLATCHY, **SENIOR REPRESENTATIVE**, PRESIDENT, EMERITUS CHAPTER, LA COLLEGE FACULTY GUILD, AFT/1521
- JADEN LEDKINS, **STUDENT REPRESENTATIVE**, PRESIDENT, ASSOCIATED STUDENT ORGANIZATION, LACC
- DANIEL SWARTZ, **TAXPAYER REPRESENTATIVE**, PRINCIPLE, QUADRANGLE DEVELOPMENT COMPANY

\*PLEASE CHECK THE WEBSITE FOR UPDATES: [HTTP://WWW.LACCD BUILDSGREEN.ORG /ABOUT-OVERSIGHT.PHP](http://www.laccdbuildsgreen.org/about-oversight.php)

## **2011-12 COMMITTEE MEMBERS:**

- NANCY CARSON, **CHAIR, LAHC REPRESENTATIVE**, DEAN OF ACADEMIC AFFAIRS, LAHC (RETIRED)
- DR. ELLIOT AXELBAND, **VICE-CHAIR, WLAC REPRESENTATIVE**, SENIOR ENGINEER, RAND CORPORATION
- DONALD SAGUCHI, **ELAC REPRESENTATIVE**, VICE PRESIDENT OF ACADEMIC AFFAIRS, ELAC (RETIRED)
- MARV HOFFMAN, **LACC REPRESENTATIVE**, VICE CHAIRMAN & FSO, NTS ENGINEERING SERVICES, INC.
- JOSE L. RODRIQUEZ, **LAMC REPRESENTATIVE**, PRINCIPAL LEADER, SECONDARY SCHOOLS/LOCAL DISTRICT 2, LAUSD
- EVA HOLMES, **LASC REPRESENTATIVE**, SCHOOL ADMINISTRATOR, LAUSD (RETIRED)
- DARRYL HOLTER, **LATTC REPRESENTATIVE**, CEO, THE SHAMMAS GROUP
- DONNA SMITH, **LAPC REPRESENTATIVE**, PRINCIPAL CHATSWORTH HIGH SCHOOL (RETIRED)
- TERRY ANDERSON, **LAVC REPRESENTATIVE**, ATTORNEY, ANDERSON & ASSOCIATES
- BOB COURTNEY, **AT-LARGE REPRESENTATIVE**, PRESIDENT, COURTNEY PROPERTY & INVESTMENTS INC.
- RICHARD SLAWSON, **AT-LARGE REPRESENTATIVE**, EXECUTIVE SECRETARY, LOS ANGELES/ORANGE COUNTIES BUILDING & CONSTRUCTION TRADES COUNCIL (RETIRED)
- DAVID RATTRAY, **BUSINESS REPRESENTATIVE**, SR. VICE PRESIDENT OF EDUCATION & WORKFORCE DEVELOPMENT, LOS ANGELES CHAMBER OF COMMERCE
- ROBERT SCHWARTZ, **FOUNDATION REPRESENTATIVE**, EXECUTIVE DIRECTOR, LOS ANGELES CITY COLLEGE FOUNDATION
- DAVID GOMEZ, **LABOR REPRESENTATIVE**, BUSINESS DEVELOPMENT ASSOCIATE, IBEW LOCAL 11 & NECA LOS ANGELES
- ETHEL McCLATCHY, **SENIOR REPRESENTATIVE**, PRESIDENT, EMERITUS CHAPTER, LA COLLEGE FACULTY GUILD, AFT/1521
- JADEN LEDKINS, **STUDENT REPRESENTATIVE**, PRESIDENT, ASSOCIATED STUDENT ORGANIZATION, LACC
- DANIEL SWARTZ, **TAXPAYER REPRESENTATIVE**, PRINCIPLE, QUADRANGLE DEVELOPMENT COMPANY

*To the Los Angeles Community College District Community:*

*The Los Angeles Community College District Citizens Oversight Committee (DCOC) submits this annual report for review by taxpayers along with supporters, users, students, faculty, staff and administrators of the district. In it is a breakdown of the costs and a review of the progress made on the construction, renovation, upgrades, furnishings and equipment for projects at the nine colleges and the satellite campuses funded by Proposition A, AA and Measure J. There is significant evidence that substantial progress continues to be made in the ongoing effort to construct modern, educationally sound and environmentally sustainable buildings. This transformation is a huge benefit to college faculties and staff in their effort to help students become well-trained, educated citizens and productive members of the workforce.*

*Students attending LACCD are a diverse group, made up of various ages, ethnicities and academic histories, in pursuit of a wide range of goals. Some are still in high school, but getting an early start on college courses. Others are recent high-school graduates seeking coursework that will enable them to obtain a two-year degree and perhaps transfer to a four-year school. Others want to complete the academic and occupational requirements for trades, or seek licenses in fields like health care, technology or the sciences. There are also older students pursuing remediation and the development of technical skills or desiring learning experiences that will improve and enrich the quality of their lives. For all these students, the facilities that have resulted from the voter-approved bond program have been invaluable because they have enabled LACCD to improve both the quality of its programs and its learning environment.*

*The DCOC consists of volunteers from various backgrounds and communities. In the committee's bi-monthly meetings, its advisory subcommittee meetings and executive subcommittee meetings, the bond program has been studied and evaluated, problems have been identified and actions recommended to the appropriate parties. Additionally, bond program performance and financial audits have been reviewed, along with regular reports from each of the colleges. Formal communication and interaction regularly occur with the LACCD Board of Trustees, the Chancellor's Office, the district's legal counsel, the Office of Inspector General, the district program manager and the district's Facilities, Planning and Development Department, as well as other LACCD personnel who support the DCOC's operation. This has enabled the DCOC to more effectively assume its oversight responsibilities. The processes initiated by the committee in the past year have enabled the DCOC to improve its information gathering and decision-making capability, giving the 2012-2013 committees a firm base for moving forward.*

*In 2011-2012, because of the decrease in state funding and the requirement to close out the bond program on budget, a construction moratorium was instituted. Projects under construction were not affected.*

*The moratorium has allowed the program manager and district officials time to examine space usage and the financial requirement and capability for providing adequate maintenance and operation of all campus structures. Many of the projects included on the moratorium list have since been released, allowing the building process to proceed, and, as can be seen in this report on pages 10-28, evaluation is continuing on the remaining projects. LACCD provides current information on the moratorium on its website ([laccdbuildsgreen.org](http://laccdbuildsgreen.org)). The goal of the bond program remains the use of its funds in a fiscally sound manner for new, sustainable construction projects and the renovation of older buildings.*

*While LACCD has made necessary changes to conform to the requirements of Proposition 39, the DCOC continues to serve as an oversight body to assure adherence. Please review the audits and responses to those audits listed on page 8 of this report. Look at what is going on at each of the colleges and sites described on pages 10-28 and visit your local campus. That will give you a vivid demonstration of what has been accomplished over the last 12 months.*

*We are also happy to report that all DCOC positions have been filled thanks to the actions of the college presidents and the Board of Trustees in selecting, nominating and approving the new members. After learning about their roles in a formal orientation and an accompanying handbook, these new members are fully prepared for their obligations. The district's legal counsel is to be commended for the development of this handbook that is now available on the LACCD website.*

*I wish to express my thanks for being allowed to serve for the last four years on the committee as well as having the honor of being its chairperson. The committee would not have had its successes without the full support of LACCD Chancellor Daniel LaVista, the Board of Trustees, and district staff and managers.*

*Nancy E. Carson, Chairperson, Districts Citizens Oversight Committee*

*For additional information, please visit our website at <http://www.laccdbuildsgreen.org/about-oversight.php>*

## Propositions A/AA and Measure J - District Citizens' Oversight Committee:

The Board of Trustees for the Los Angeles Community College District formed the District Citizens' Oversight Committee (DCOC) in June 2001 to provide a vital link between the District and the community with respect to implementation of Proposition A funds for construction and modernization projects within the District. The Proposition A bond measure totaled \$1.245 billion. The voters subsequently approved two additional bonds: Proposition AA and Measure J. Proposition AA bond measure totaled \$980 million and Measure J bond measure totaled \$3.5 billion. The DCOC consists of seventeen representatives from the local communities. The DCOC members are appointed for a two year term and can be re-appointed for an additional term not to exceed two consecutive two year terms.



### Los Angeles Community College

#### District Board of Trustees:

**Steve Veres**, *President*

**Tina Park**, *First Vice President*

**Nancy Pearlman**, *Second Vice President*

**Kelly Candaele**

**Mona Field**

**Miguel Santiago**

**Scott J. Svonkin**

**Daniel Campos**, *Student Trustee*

#### Chancellor:

**Daniel J. LaVista**

### DCOC Regular Meetings

All meetings are open to the public, recorded and documented by minutes.

The schedule for 2012-13 is:

**August 24, 2012**, 12pm-2pm—811 Wilshire Blvd., 3rd floor Hearing Room

**October 26, 2012**, 12pm-2pm—811 Wilshire Blvd., 3rd floor Hearing Room

**December 14, 2012**, 12pm-2pm—Location to be determined

**February 22, 2013**, 12:00-2:00 PM—Location to be determined

**April 26, 2013**, 12pm-2pm—Location to be determined

**June 13, 2013**, 12pm-2pm—Location to be determined

Please check the website for schedule/location changes:

<http://www.laccdbuildsgreen.org/about-oversight.php>

# DISTRICT MAP



# DISTRICT BOND PROGRAM FACTS

## *Status of Projects:*

- ⇒ 183 Projects are Complete
- ⇒ 36 Projects in Construction
- ⇒ 29 Projects in Design
- ⇒ 22 Projects are in Planning
- ⇒ 24 Projects not Started
- ⇒ 63 In Moratorium

## *Budget Overview:*

Total: \$6,257,699,312

Contracted: \$4,597,109,329

Expended: \$3,740,894,976

## *There are 88 Leadership in Energy and Environmental Design (LEED) Projects:*

- ◇ 12 in certification
- ◇ 13 in construction
- ◇ 39 in design/programming
- ◇ 24 USGBC LEED Certified
  - 12 Gold
  - 9 Silver
  - 2 Certified
  - 1 Gold Campus



### **Report Covers Fiscal Year 2011-12**

This is the DCOC's formal annual report of Propositions A/AA and Measure J by the Citizens' Oversight Committee since its formation in June 2001. It is the intent of the District Citizens' Oversight Committee (DCOC) to issue reports annually, consistent with the requirements of Proposition 39.



### **DCOC Establishment, Purpose and Responsibilities**

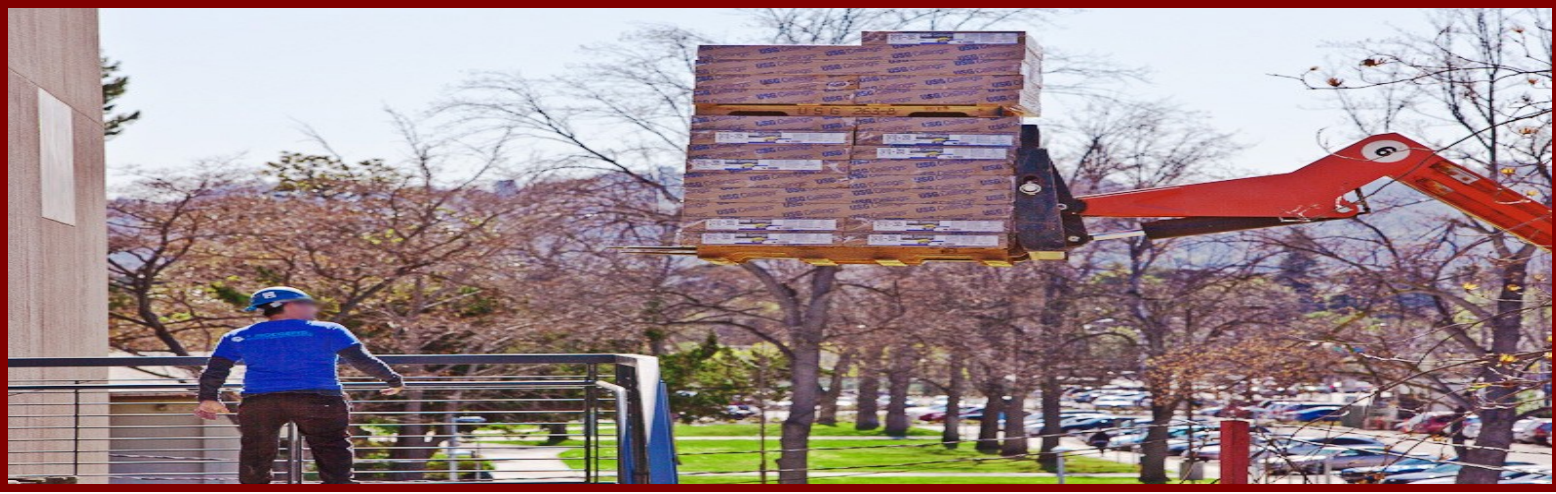
As provided in Education Code section 15278, the District's Citizens' Oversight Committee was established by the Board of Trustees to inform the public concerning the District's expenditure of revenues received from the sale of bonds authorized by the voters on April 10, 2001, May 20, 2003 and November 4, 2008.

The District Citizens' Oversight Committee will provide oversight ensuring that:

- a. bond revenues are expended only for the construction, rehabilitation, or replacement of college facilities, including the furnishing and equipping of college facilities, or the acquisition or lease of real property for college facilities; and
- b. no bond revenues are expended for any teacher or administrative salaries or other college operating expenses.

To carry out its role, the District Citizens' Oversight Committee may:

1. receive and review copies of the annual independent performance audit,
2. receive and review copies of the annual independent financial audit of the bond revenue,
3. inspect college facilities and grounds to ensure that the bond revenue is expended in compliance with the requirements of paragraph (3) of subdivision (b) of Section 1 of Article XIII A of the California Constitution,
4. receive and review copies of deferred maintenance proposals or plans developed by the District; and
5. review efforts by the District to maximize bond revenues by implementing various cost saving measures.



### District Bond Program Audits, Reports and LACCD Responses

*The following were completed and presented to the DCOC:*

- Bond Performance Audit—Fiscal Year Ended June 30, 2011 [http://www.laccdbuildsgreen.org/docs/about-oversight/bondConstructionProgram/performanceAudits/LACCD\\_2010-11\\_Bond\\_Program\\_Performance\\_Audit\\_FINAL\\_050912.pdf](http://www.laccdbuildsgreen.org/docs/about-oversight/bondConstructionProgram/performanceAudits/LACCD_2010-11_Bond_Program_Performance_Audit_FINAL_050912.pdf)
- Hill International Report [http://www.laccdbuildsgreen.org/docs/about-oversight/Hill\\_Report1.pdf](http://www.laccdbuildsgreen.org/docs/about-oversight/Hill_Report1.pdf)
- Building Program Review Panel Report <http://www.laccd.edu/news/documents/BPRP%20Report.pdf>
- OIG Report: Selection of Construction Contractors by the Office of Inspector General: [http://www.laccd-oig.org/assets/OIG-003\\_Selection\\_of\\_Construction\\_Contractors\\_10-11-11\\_SC139\\_P.pdf](http://www.laccd-oig.org/assets/OIG-003_Selection_of_Construction_Contractors_10-11-11_SC139_P.pdf)
- OIG Report: Van de Kamp Innovation Center Project Expenditure Review (October 2011 Update)
- Chancellor’s Report: “LACCD Extends Building Program Moratorium to Step Back and Examine Costs to Complete the Program”
- OIG Report: Performance Audit of Bond Program Management [http://www.laccd-oig.org/assets/OIG-005\\_Bond\\_Fund\\_Mgmt\\_Audit\\_Report.pdf](http://www.laccd-oig.org/assets/OIG-005_Bond_Fund_Mgmt_Audit_Report.pdf)
- OIG Report: Audit of Professional Service Consultants Selection [http://www.laccd-oig.org/assets/OIG-004\\_Prof\\_Svcs\\_Audit\\_4.3.12.pdf](http://www.laccd-oig.org/assets/OIG-004_Prof_Svcs_Audit_4.3.12.pdf)
- 2011 Financial Performance Audit by KPMG [http://www.laccdbuildsgreen.org/docs/about-oversight/bondConstructionProgram/financialAudits/FY\\_2010-11\\_bond\\_program\\_financial\\_audit.pdf](http://www.laccdbuildsgreen.org/docs/about-oversight/bondConstructionProgram/financialAudits/FY_2010-11_bond_program_financial_audit.pdf)

*The reports can be found at <http://www.laccdbuildsgreen.org/about-oversight.php>.*





## DCOC 2011-12 Year in Review

Some of the changes, recommendations and events that took place in 2011-12 to improve communication, transparency, and program accountability to the DCOC are:

- ◆ DCOC created an Executive Subcommittee consisting of the DCOC Chairperson, Vice-Chairperson, Chairperson of the Advisory Subcommittee or an alternate, and at least one member selected at large from the DCOC. This subcommittee will be tasked by the DCOC Chairperson, or if unavailable or delegated, by the Vice-Chairperson to prepare DCOC agendas and annual reports along with other reports and documents to support the work of the DCOC.
- ◆ DCOC formed an Advisory Subcommittee consisting of volunteers from the DCOC. They shall be appointed to the subcommittee by the DCOC Chairperson or a designee during a regular meeting of the DCOC. Maximum size of the subcommittee shall be seven members or less than a quorum, whichever number is smaller. The primary purpose of the subcommittee shall be to research issues of importance to the DCOC, bring back findings and make recommendations to the DCOC. The Advisory Committee membership is not constant. It will vary with the issue being considered.
- ◆ DCOC presented its annual report to the LACCD Board of Trustees.
- ◆ DCOC Chairperson and Vice-Chairperson met with the Building Program Review Panel.
- ◆ DCOC reviewed the regular reports from each of the colleges on the status of their construction programs and, with LACCD, created a common format for future reports.
- ◆ DCOC continued to explore the need for an independent DCOC counsel with a final recommendation expected in the fall of 2012.
- ◆ DCOC decided that a handbook should be written to enumerate the rules and responsibilities of DCOC members. With input from the DCOC, the handbook was produced by the LACCD General Counsel and is now in use.
- ◆ DCOC established regular communication between the Executive Subcommittee and the Board of Trustees to allow for open dialogue about the bond program and the opportunity for the DCOC to offer its advice on pending matters. It also provided advice on bond program reserve funds.
- ◆ DCOC advised the Board of Trustees regarding the formation and use of construction financial reserves.
- ◆ DCOC examined oversight audits provided by the Inspector General, and several outside, independent audits (see page 8 for the list of audits).



## DCOC Contact Information

To contact the Los Angeles Community College District regarding the Propositions A/AA and Measure J Bond Program or members of the DCOC, please contact Lillian Mazariegos at telephone 213.891.2081 or email at [MazariLD@email.laccd.edu](mailto:MazariLD@email.laccd.edu). The District Office is located at 770 Wilshire Boulevard, Los Angeles CA 90017.

# East Los Angeles College Project Highlights



THE RECONSTRUCTED BAILEY LIBRARY PROJECT ADDED 11,840 SQUARE FEET TO THE ORIGINAL BUILDING, INCREASING THE BUILDING SIZE AFTER COMPLETION TO 57,340 SQUARE FEET. THIS BUILDING IS SCHEDULED TO OPEN FALL 2012.



THE NEW PARKING STRUCTURE 4 IS LOCATED AT THE NORTHEAST CORNER OF THE CAMPUS AND IT WILL HAVE 1,445 PARKING STALLS. THE PARKING STRUCTURE IS EXPECTED TO OPEN FALL 2012.

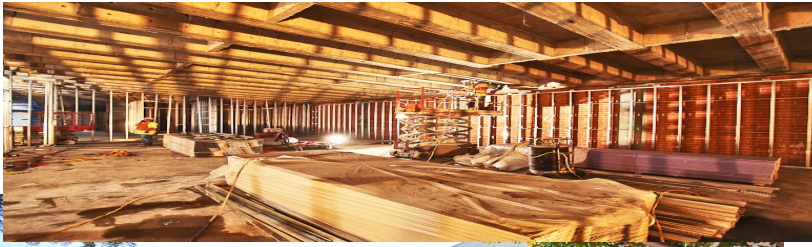
# EAST LOS ANGELES COLLEGE - PROJECT LIST/ SUPPORT SERVICES

PROJECT NAME	STATUS	BUDGET AT COMPLETION
PARKING STRUCTURE LOT 3	COMPLETED	\$38,459,117
PHYSICAL PLANT BUILDING	COMPLETED	\$3,737,852
FITNESS CENTER	COMPLETED	\$832,867
PERFORMING AND FINE ARTS COMPLEX	COMPLETED	\$99,345,477
PE FIELDS	COMPLETED	\$5,402,503
BAUM CENTER	COMPLETED	\$23,262,367
STUDENT SERVICES BUILDING E 1	COMPLETED	\$39,460,012
TECHNOLOGY CENTER	COMPLETED	\$9,416,539
CENTRAL PLANT AND MICROTURBINES/ TES FARM	COMPLETED	\$29,890,901
NORTHEAST PARKING RESURFACING	COMPLETED	\$475,855
E3 & E5 REPLACEMENT BUILDING	COMPLETED	\$17,996,746
CAMPUS-WIDE INFRASTRUCTURE	COMPLETED	\$30,642,692
RWGPL	COMPLETED	\$1,945,114
ENTRY PLAZA	COMPLETED	\$5,343,609
CAMPUS-WIDE IMPROVEMENTS	COMPLETED	\$2,828,416
CORPORATE CENTER FOR HEALTH CAREER (LAND ACQUISITION)	COMPLETED	\$13,459,468
MASTER PLANNING	COMPLETED	\$1,000,268
PARKING STRUCTURE LOT 4 /FACILITIES MAINTENANCE (NORTHEAST)	COMPLETED	\$16,630,704
ELAC STADIUM MODERNIZATION - PHASE 1 (EAST END TERRACE)	CONSTRUCTION	\$9,469,955
ACADEMIC NETWORK INTEGRATED BACKBONE	CONSTRUCTION	\$4,104,350
CAMPUS MARQUEES	CONSTRUCTION	\$2,234,238
BAILEY LIBRARY LEARNING CENTER MODERNIZATION	CONSTRUCTION	\$19,003,597
SCIENCE CAREER & MATHEMATICS BUILDING	DESIGN	\$79,197,218
CAMPUS STUDENT CENTER/BOOK STORE COMPLEX - TEMP SPACE	DESIGN	\$1,988,651
MEN'S BASEBALL FIELD RENOVATION	DESIGN	\$5,087,799
CAMPUS STUDENT CENTER/BOOK STORE COMPLEX	MORATORIUM	\$38,599,246
HEALTH CAREERS CENTER	MORATORIUM	\$27,588,973
STUDENT SUCCESS AND RETENTION CENTER	MORATORIUM	\$81,443,744
TRANSIT CENTER ACCESSIBILITY	ONGOING	\$1,065,629
CAMPUS PROJECT SUPPORT	ONGOING	\$57,445,542
BULK PROCUREMENT	ONGOING	\$569
<b>TOTAL</b>		<b>\$667,360,019</b>

# Los Angeles City College Project Highlights



**THIS IS THE GREEN TECHNOLOGY STUDENT UNION BUILDING. THE BUILDING WILL HAVE 60,000 SQUARE FEET AND PROVIDE SPACE FOR THE BOOKSTORE, FOOD SERVICES, ASSOCIATED STUDENT ORGANIZATION (ASO), RECEIVING, COMPUTER LAB/STUDY AREAS, AND VARIOUS OTHER STUDENT ACTIVITIES. THE BUILDING IS SCHEDULE TO OPEN FALL 2012.**



**THE CLAUSEN HALL MODERNIZATION PROJECT WILL CREATE A MODERN EDUCATIONAL FACILITY WITH THE CAPABILITY OF DELIVERING INSTRUCTION THROUGH DIFFERENT MEDIA. PROJECT COMPLETION IS SCHEDULED FOR FALL 2013.**

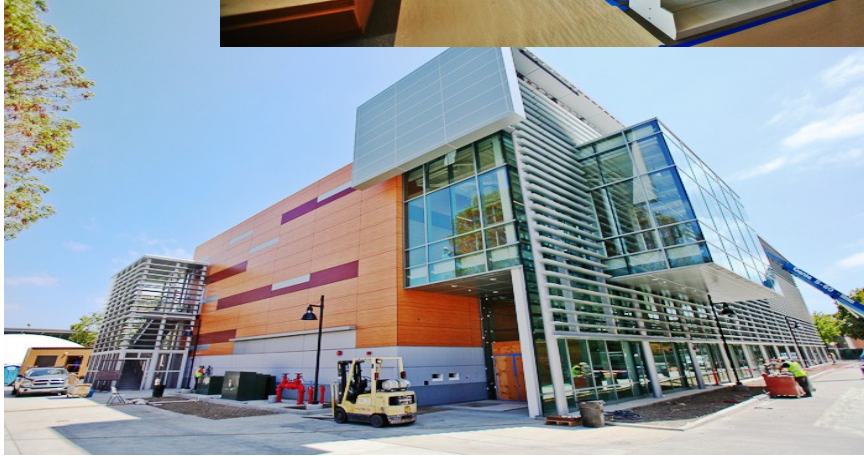


**THE NEW HEALTH, FITNESS, AND P.E. BUILDING WILL HAVE 40,000 SQUARE FEET AND PROVIDE SPACE FOR A BASKETBALL GYMNASIUM, MULTI-PURPOSE CLASSROOMS, JUDO LABORATORY, FITNESS CENTER, MEN'S/WOMEN'S LOCKER ROOMS, AND OUTDOOR SWIMMING POOL. PROJECT COMPLETION IS SCHEDULE FOR SPRING 2013.**

# LOS ANGELES CITY COLLEGE - PROJECT LIST/ SUPPORT SERVICES

PROJECT NAME	STATUS	BUDGET AT COMPLETION
MAINTENANCE FACILITIES	COMPLETED	\$535,339
JEFFERSON HALL MODERNIZATION	COMPLETED	\$10,715,498
COMMUNICATIONS BUILDING	COMPLETED	\$662,619
STUDENT LOUNGE	COMPLETED	\$555,553
PARKING MITIGATION - I PASS	COMPLETED	\$539,520
FOOD LAB UPGRADE	COMPLETED	\$774,414
CHEMISTRY BUILDING MODERNIZATION	COMPLETED	\$5,921,546
LIFE SCIENCES MODERNIZATION	COMPLETED	\$4,380,784
RWGPL - CENTRAL PLANT	COMPLETED	\$7,395,512
SCIENCE AND TECHNOLOGY BUILDING	COMPLETED	\$43,018,155
FRANKLIN HALL MODERNIZATION	COMPLETED	\$24,487,389
MLK LIBRARY - LEARNING RESOURCE CENTER	COMPLETED	\$23,412,701
RWGPL - SITE UTILITIES INFRASTRUCTURE	COMPLETED	\$24,158,825
PARKING STRUCTURE	COMPLETED	\$52,215,970
CHILD DEVELOPMENT CENTER	COMPLETED	\$15,831,857
ROOFING - CHAVEZ, RADTECH, HOLMES, THEATER	COMPLETED	\$580,768
CLAUSEN HALL MODERNIZATION	CONSTRUCTION	\$19,906,601
TEMPORARY FACILITIES/3020 WILSHIRE	CONSTRUCTION	\$14,936,379
GREEN TECHNOLOGY STUDENT UNION BUILDING	CONSTRUCTION	\$41,349,345
HEALTH, FITNESS, PE BUILDING	CONSTRUCTION	\$24,253,021
ATHLETIC FIELD	CONSTRUCTION	\$4,005,228
SOUTH GYM MODERNIZATION	DESIGN	\$11,509,676
HOLMES HALL MODERNIZATION	DESIGN	\$8,235,500
RWGPL - RED LINE PEDESTRIAN CORRIDOR	DESIGN	\$6,454,619
CAMPUS-WIDE IMPROVEMENTS	DESIGN	\$6,508,332
DA VINCI HALL MODERNIZATION	DESIGN	\$19,198,423
TENNIS COURTS	PLANNING	\$617,403
RWGPL - CENTRAL PLANT PHASE II	PLANNING	\$4,041,471
RWGPL - STREET IMPROVEMENTS	PLANNING	\$1,735,307
CESAR CHAVEZ - ADMIN BUILDING MODERNIZATION	NOT STARTED	\$23,015,920
STUDENT SERVICES CENTER	MORATORIUM	\$36,321,145
PHYSICAL PLANT (M&O BUILDING)	MORATORIUM	\$8,255,953
LEARNING SUPPORT CENTER	MORATORIUM	\$25,458,721
DEMOLITION OF MEN'S GYM, POOL, MAINT & MISC BUNGALOWS	MORATORIUM	\$0
RWGPL - LANDSCAPING/HARDSCAPE IMPROVEMENTS	MORATORIUM	\$19,977,131
LAND ACQUISITION - SOUTH OF MONROE STREET PROJECTS	ONGOING	\$25,449,859
MASTER PLANNING	ONGOING	\$1,807,355
CAMPUS PROJECT SUPPORT	ONGOING	\$48,519,242
BULK PROCUREMENT	ONGOING	\$1,882
FAMILY LIFE SCIENCE	CANCELLED	\$112,331
THEATER BUILDING	CANCELLED	\$38,789
SCIENCE AND TECHNOLOGY II	CANCELLED	\$135,328
STUDENT ADMISSIONS CENTER	CANCELLED	\$1,109,227
PARKING STRUCTURE - STUDENT ADMISSIONS CENTER	CANCELLED	\$751,541
CAFETERIA BUILDING	CANCELLED	\$17,054
<b>TOTAL</b>		<b>\$568,909,237</b>

# Los Angeles Harbor College Project Highlights



THE NEWLY CONSTRUCTED LEARNING RESOURCE CENTER IS 43,009 SQUARE FEET AND WILL REPLACE THE OLD LIBRARY. THIS BUILDING IS SCHEDULED TO OPEN WINTER/SPRING SESSION OF 2013.



THE NEW SCIENCE COMPLEX BUILDING IS 76,900 SQUARE FEET AND PROVIDES SPACE FOR ALL OF THE SCIENCE PROGRAMS AND ASSOCIATED EDUCATIONAL FUNCTIONS. THE BUILDING IS SCHEDULED TO OPEN SPRING 2013.

# LOS ANGELES HARBOR COLLEGE - PROJECT LIST/ SUPPORT SERVICES

PROJECT NAME	STATUS	BUDGET AT COMPLETION
NEW CHILD DEVELOPMENT CENTER	COMPLETED	\$10,087,654
FINE ARTS BUILDING	COMPLETED	\$1,608,657
STUDENT SERVICES CENTER	COMPLETED	\$21,316,136
TRACK AND FIELD	COMPLETED	\$6,241,883
NURSING BUILDING	COMPLETED	\$975,209
ASTRONOMY MODERNIZATION	COMPLETED	\$3,062,531
EXISTING BUILDING EXTERIOR UPGRADE - CAMPUS WIDE	COMPLETED	\$54,759
CAMPUS IMPROVEMENTS - RESTROOMS	COMPLETED	\$2,360,089
RWGPL	COMPLETED	\$3,175,138
STUDENT CAFETERIA AND SEAHAWK CENTER	COMPLETED	\$91,600
PE FACILITY	COMPLETED	\$182,511
TECHNOLOGY INSTRUCTION AND CLASSROOM BUILDING	COMPLETED	\$29,637,797
TECHNOLOGY INSTRUCTION AND CLASSROOM BUILDING - TV STUDIO	COMPLETED	\$883,257
FACILITIES MANAGEMENT AND OPERATIONS HEADQUARTERS	COMPLETED	\$15,054,654
NORTHEAST ACADEMIC BUILDING	COMPLETED	\$31,321,895
PE, WELLNESS CENTER	COMPLETED	\$20,769,425
MUSIC BUILDING	COMPLETED	\$1,899,289
GENERAL CLASSROOM BUILDING	COMPLETED	\$319,449
SITE UTILITIES ALLOWANCE	COMPLETED	\$9,961,268
CENTRAL PLANT	COMPLETED	\$11,309,727
KEYLESS ENTRANCE SYSTEM	COMPLETED	\$400
CAMPUS SOFTBALL FIELD MODERNIZATION	COMPLETED	\$203,301
CAMPUS PARKING LOT RECONSTRUCTION	COMPLETED	\$10,061,276
WEST PARKING STRUCTURE	COMPLETED	\$23,735,110
CAMPUS IMPROVEMENTS	COMPLETED	\$2,738,571
SCIENCE COMPLEX	CONSTRUCTION	\$60,688,897
NEW LEARNING RESOURCE CENTER	CONSTRUCTION	\$27,724,982
INFRASTRUCTURE/LAND & HARDSCAPE/SECURITY	CONSTRUCTION	\$26,161,063
MARQUEE MODERNIZATION	CONSTRUCTION	\$2,116,615
THEATER DRAMA SPEECH BUILDING	DESIGN	\$15,782,790
NURSING MODERNIZATION (OLD ADMIN.BLDG.)	PLANNING	\$13,994,920
CAMPUS ADA	PLANNING	\$490,401
STUDENT UNION	MORATORIUM	\$52,758,408
MASTER PLANNING	ONGOING	\$2,351,065
CAMPUS PROJECT SUPPORT	ONGOING	\$54,386,325
BULK PROCUREMENT	ONGOING	\$405
COMMUNITY SERVICES MODERNIZATION	CANCELLED	\$945,899
<b>TOTAL</b>		<b>\$464,453,353</b>

# Los Angeles Mission College Project Highlights



THE NEW CENTER FOR MATH AND SCIENCE (EAST CAMPUS COMPLEX) WILL PROVIDE INSTRUCTIONAL SPACE FOR BIOLOGICAL SCIENCES, PHYSICAL SCIENCES, GEOGRAPHY, COMPUTER/TUTORING LABORATORIES, FACULTY OFFICES, AUDITORIUM AND OTHER SUPPORT AREAS. THE BUILDING IS SCHEDULED TO OPEN FALL 2012.



THE NEW MEDIA ARTS CENTER WILL HAVE 37,204 SQUARE FEET AND WILL PROVIDE SPACE FOR PERFORMANCE THEATER, ART GALLERY, ART/PAINTING ROOMS, FACULTY OFFICES, GRAPHICS ARTS AND COMPUTER GRAPHIC ARTS EXHIBITION SPACE. THE BUILDING IS SCHEDULED TO OPEN FALL 2013.



# LOS ANGELES MISSION COLLEGE - PROJECT LIST/ SUPPORT SERVICES

PROJECT NAME	STATUS	BUDGET AT COMPLETION
PARKING STRUCTURE A	COMPLETED	\$27,894,747
HEALTH AND PE, FITNESS CENTER	COMPLETED	\$49,773,949
FAMILY AND CONSUMERS STUDIES BUILDING	COMPLETED	\$52,569,028
INSTRUCTION STUDENT SERVICES BUILDING	COMPLETED	\$1,933,654
CAMPUS CENTER	COMPLETED	\$804,087
CHILD DEVELOPMENT CENTER	COMPLETED	\$13,236,157
INSTRUCTIONAL BUILDING	COMPLETED	\$5,413,920
SHERIFF STATION	COMPLETED	\$5,007,879
CAMPUS-WIDE INFRASTRUCTURE	COMPLETED	\$13,288,929
TEMPORARY FACILITIES	COMPLETED	\$21,412
CAMPUS-WIDE IMPROVEMENTS	COMPLETED	\$749,150
LAND ACQUISITION	COMPLETED	\$9,963,576
LAND ACQUISITION - CHURCH PROPERTY	COMPLETED	\$5,679,158
LAND ACQUISITION AT HUBBARD STREET	COMPLETED	\$1,340,000
MASTER PLANNING	COMPLETED	\$4,275,170
MEDIA ARTS CENTER	CONSTRUCTION	\$30,535,624
EAST COMPLEX	CONSTRUCTION	\$85,932,533
CAMPUS DEMAND SIDE MANAGEMENT	CONSTRUCTION	\$5,170,790
CENTRAL ENERGY PLANT NOT STARTED	PLANNING	\$1,010,000
RWGPL	MORATORIUM	\$4,375,026
STUDENT SERVICES/ ADMIN BUILDING	MORATORIUM	\$33,899,547
CAMPUS MODERNIZATION PHASE 1	MORATORIUM	\$19,355,928
CAMPUS MODERNIZATION PHASE 2	MORATORIUM	\$13,733,983
ATHLETIC COMPLEX	MORATORIUM	\$25,220,735
LEARNING ASSISTANCE CENTER	MORATORIUM	\$1,888,242
CAMPUS PROJECT SUPPORT	ONGOING	\$35,970,601
BULK PROCUREMENT	ONGOING	\$349
PARKING STRUCTURE B	CANCELLED	\$0
PLANT FACILITIES AND CENTRAL PLANT	CANCELLED	\$1,534,622
<b>TOTAL</b>		<b>\$450,578,799</b>

# Los Angeles Pierce College Project Highlights



**THE NEW LIBRARY/LEARNING CROSSROADS BUILDING WILL HAVE 104,500 SQUARE FEET AND WILL PROVIDE SPACE FOR THE COMPUTER LEARNING CENTER, A TUTORIAL LEARNING CENTER, A STAFF DEVELOPMENT TRAINING FACILITY, OPEN SPACE TO ACCOMMODATE THE STAFF, AND A FOOD COURT AREA. THE BUILDING IS SCHEDULED TO OPEN SPRING 2013.**



**THE STADIUM ADA IMPROVEMENTS PROJECT RENOVATED THE EXISTING STADIUM, BLEACHERS AND FIELD HOUSE FOCUSING ON ADA UPGRADES AND ATHLETIC FIELD IMPROVEMENTS. THE PROJECT IS SCHEDULED TO OPEN SUMMER 2013.**



**THE THEATER BUILDING (PERFORMING ARTS) RENOVATION PROJECT INCLUDES THE RESTROOMS, PROVIDES HVAC ALTERATIONS, NEW FLOORING, PAINTING, WINDOW TREATMENTS, STAGE IMPROVEMENTS, NEW BOX OFFICE, ADDITIONAL STORAGE, NEW ORCHESTRA SHELL, AND UPDATES THE LOBBY AREA. PROJECT COMPLETION IS SCHEDULED FOR SPRING 2013.**

## PIERCE COLLEGE - PROJECT LIST/ SUPPORT SERVICES

PROJECT NAME	STATUS	BUDGET AT COMPLETION
NEW MAINTENANCE AND OPERATIONS FACILITY	COMPLETED	\$17,629,639
PHOTOVOLTAIC ARRAYS FOR PARKING LOTS 1 AND 8	COMPLETED	\$7,688,895
COLLEGE - INITIATIVES	COMPLETED	\$483,826
P.E. FACILITIES	COMPLETED	\$23,883,247
CENTER FOR THE SCIENCES	COMPLETED	\$62,589,830
STUDENT STORE AND FINANCIAL AID BUILDING	COMPLETED	\$8,729,325
EXISTING LIBRARY RENOVATION	COMPLETED	\$408,521
CHILD DEVELOPMENT CENTER	COMPLETED	\$14,519,222
BUSINESS EDUCATION RENOVATION	COMPLETED	\$3,160,960
FINE ART AND MUSIC RENOVATION	COMPLETED	\$4,458,333
ANIMAL SCIENCE FACILITIES	COMPLETED	\$2,527,662
CAMPUS SHERIFF STATION	COMPLETED	\$598,794
EXHIBITION AND EVENTS CENTER	COMPLETED	\$6,833,365
STUDENT SERVICES BUILDING	COMPLETED	\$23,439,573
OLD BOOK STORE RENOVATION	COMPLETED	\$3,256,970
LANDSCAPE AND SITE MASTER PLAN	COMPLETED	\$10,782,921
CENTRAL PLANT	COMPLETED	\$8,375,746
CAMPUS-WIDE INFRASTRUCTURE PHASE I	COMPLETED	\$33,661,577
CAMPUS-WIDE IMPROVEMENTS - PARKING LOTS PHASE I	COMPLETED	\$9,433,493
TEMPORARY FACILITIES - RELOCATION, ACQUISITION (PIERCE VILLAGE)	COMPLETED	\$12,807,166
CAMPUS-WIDE IMPROVEMENTS - ROADWAYS PHASE I	COMPLETED	\$9,021,665
FACULTY OFFICES RENOVATION	CONSTRUCTION	\$3,886,209
THEATER/PERFORMING ARTS BUILDING RENOVATION	CONSTRUCTION	\$12,836,195
STUDENT LEARNING ENVIRONMENTS (SLE) – CLASSROOM MODERNIZATION & TECHNOLOGY UPGRADE NORTH	CONSTRUCTION	\$8,201,800
STADIUM ADA IMPROVEMENTS	CONSTRUCTION	\$11,416,509
RENOVATION OF AGRICULTURAL FACILITIES	CONSTRUCTION	\$3,417,512
SUSTAINABLE LANDSCAPE AND CAMPUS ACCESSIBILITY COMPLIANCE	CONSTRUCTION	\$5,849,216
LIFE SCIENCE, CHEMISTRY, PHYSICS BUILDING RENOVATION	CONSTRUCTION	\$12,688,261
ADMINISTRATION BUILDING RENOVATION	CONSTRUCTION	\$6,966,233
COMPUTER SCIENCE AND COMPUTER LEARNING RENOVATION	CONSTRUCTION	\$7,240,958
BEHAVIORAL SCIENCE, SOCIAL SCIENCE, MATHEMATICS, AND ENGLISH BUILDINGS RENOVATION	CONSTRUCTION	\$9,558,095
CAMPUS CENTER RENOVATION	CONSTRUCTION	\$4,680,307
NEW LIBRARY/LEARNING CROSSROADS BUILDING	CONSTRUCTION	\$52,590,598
CAMPUS-WIDE INFRASTRUCTURE PHASE II	DESIGN	\$1,902,507
CAMPUS-WIDE INFRASTRUCTURE PHASE III	DESIGN	\$3,941,195
STUDENT LEARNING ENVIRONMENTS (SLE) – CLASSROOM MODERNIZATION & TECHNOLOGY UPGRADE SOUTH	PLANNING	\$7,587,443
SUSTAINABLE LANDSCAPE AND CAMPUS ACCESSIBILITY COMPLIANCE - DESOTO AND MASON ENTRANCES	PLANNING	\$3,496,863
SUSTAINABLE LANDSCAPE AND CAMPUS ACCESSIBILITY COMPLIANCE - SLE - SOUTH OF MALL	PLANNING	\$6,495,046
PARKING LOTS AND ROADWAYS PHASE V	PLANNING	\$3,587,604
HORTICULTURE FACILITIES	MORATORIUM	\$19,107,919
GREEN TECHNOLOGIES BUILDING	MORATORIUM	\$26,119,816
DIGITAL ARTS AND MEDIA BUILDING	MORATORIUM	\$47,723,869
AGRICULTURAL EDUCATION CENTER	MORATORIUM	\$5,704,934
EXPANDED AUTOMOTIVE AND NEW TECHNICAL EDUCATION FACILITIES	MORATORIUM	\$31,581,617
PARKING LOTS AND ROADWAYS PHASE III	MORATORIUM	\$2,945,546
PARKING LOTS AND ROADWAYS PHASE IV	MORATORIUM	\$2,190,228
WEST CENTRAL PLANT	MORATORIUM	\$5,434,322
LAND ACQUISITION - AGOURA PROPERTY	ONGOING	\$284,936
PARKING LOTS AND ROADWAYS PHASE II	ONGOING	\$3,245,857
MASTER PLANNING	ONGOING	\$2,413,104
CAMPUS PROJECT SUPPORT	ONGOING	\$70,270,565
BULK PROCUREMENT	ONGOING	\$550
TECHNOLOGY CENTER	CANCELLED	\$1,272,266
LIFE SCIENCE AND NATURAL RESOURCES MANAGEMENT	CANCELLED	\$6,556
<b>TOTAL</b>		<b>\$648,935,368</b>

# Los Angeles Southwest College Project Highlights



THE NEW NORTHEAST QUADRANT PARKING STRUCTURE WILL PROVIDE SIX HUNDRED AND FIVE (605) PARKING SPACES. THIS STRUCTURE IS SCHEDULED TO OPEN FALL 2012. THERE IS ALSO A PHOTOVOLTAIC FARM ON THE ROOF OF THE STRUCTURE THAT WILL GENERATE APPROXIMATELY 1.51 KILOWATTS.



THE SCHOOL OF BEHAVIORAL AND SOCIAL SCIENCES, FORMERLY STUDENT SERVICES EDUCATION CENTER PROJECT, IS LIMITED TO INTERIOR IMPROVEMENTS OF EXISTING CLASSROOMS AND OFFICES AND CONNECTING THE BUILDING TO THE CENTRAL PLANT. THIS BUILDING WAS COMPLETED IN SPRING 2012.

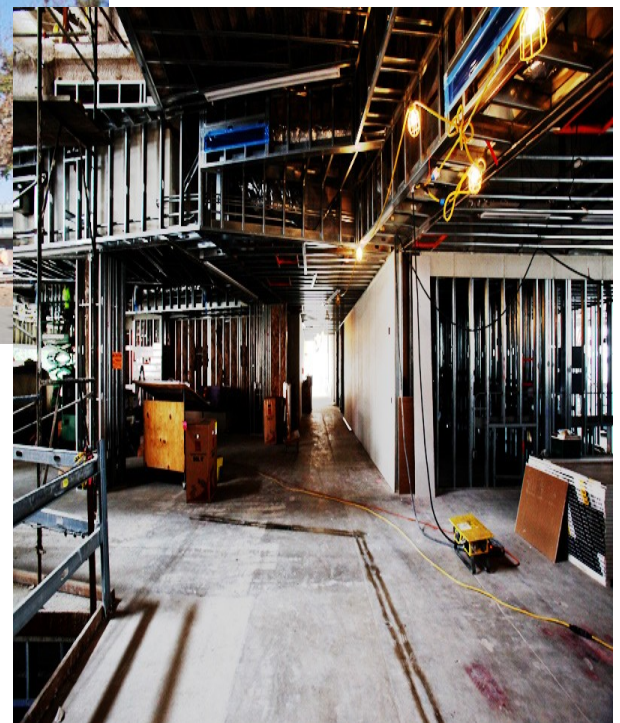
## LOS ANGELES SOUTHWEST COLLEGE - PROJECT LIST/ SUPPORT SERVICES

PROJECT NAME	STATUS	BUDGET AT TION	COMPLE-
SCHOOL OF BEHAVIORAL AND SOCIAL SCIENCES	COMPLETED	\$22,237,626	
STUDENT SERVICES ACTIVITIES CENTER	COMPLETED	\$29,643,110	
COX BUILDING - PHASE I	COMPLETED	\$2,505,742	
PE FIELDS	COMPLETED	\$1,146,141	
ATHLETIC FIELD HOUSE, STADIUM	COMPLETED	\$21,773,357	
CHILD DEVELOPMENT CENTER	COMPLETED	\$20,405,970	
MAINTENANCE AND OPERATION FACILITY	COMPLETED	\$13,485,500	
CENTRAL PLANT	COMPLETED	\$14,195,425	
WEST ENTRY DRIVE AND PARKING LOT FACILITIES	COMPLETED	\$14,390,887	
CAMPUS CORNER SIGN	COMPLETED	\$876,711	
DESIGN BUILD - EAST AND WEST SIDES	COMPLETED	\$3,648,935	
CAMPUS WIDE TECHNOLOGY UPGRADES - PHASE I	COMPLETED	\$2,228,486	
RWGPL	COMPLETED	\$11,778,762	
CAMPUS-WIDE IMPROVEMENTS	COMPLETED	\$1,296,446	
SCHOOL OF MATH & SCIENCES (LECTURE LAB) PHASE I	CONSTRUCTION	\$29,981,882	
CAMPUS WIDE INFRASTRUCTURE UPGRADES - PHASE I	CONSTRUCTION	\$9,065,768	
NORTHEAST QUADRANT PARKING STRUCTURE	CONSTRUCTION	\$14,428,582	
COX BUILDING - PHASE II (LITTLE THEATER UPGRADE)	DESIGN	\$12,208,921	
SCHOOL OF ENGLISH & FOREIGN LANGUAGES MODERNIZATION	DESIGN	\$10,358,037	
FITNESS AND WELLNESS CENTER	DESIGN	\$18,224,266	
COX BUILDING - PHASE III	MORATORIUM	\$36,550,765	
SCHOOL OF MATH & SCIENCES (LECTURE LAB) PHASE II	MORATORIUM	\$0	
SCHOOL OF CAREER & TECHNICAL EDUCATION	MORATORIUM	\$24,194,532	
SCHOOL OF ARTS AND HUMANITIES	MORATORIUM	\$31,489,839	
HEALTH ACADEMY BUILDING	MORATORIUM	\$8,469,597	
CAMPUS WIDE SECURITY UPGRADES	MORATORIUM	\$2,133,013	
CAMPUS WIDE INFRASTRUCTURE UPGRADES - PHASE II	MORATORIUM	\$2,642,290	
CAMPUS WIDE TECHNOLOGY UPGRADES - PHASE II	MORATORIUM	\$2,630,744	
CAMPUS WIDE HARDSCAPE & LANDSCAPE IMPROVEMENTS AND FIRE ACCESS	MORATORIUM	\$3,025,891	
MASTER PLANNING	ONGOING	\$2,247,602	
CAMPUS PROJECT SUPPORT	ONGOING	\$35,311,601	
BULK PROCUREMENT	ONGOING	\$349	
LAND ACQUISITION - CAMPUS CORNER SIGN	ONGOING	\$1,703,836	
RENEWABLE ENERGY	CANCELLED	\$1,934	
<b>TOTAL</b>		<b>\$404,282,546</b>	

# Los Angeles Trade-Tech College Project Highlights



THE RENOVATE AND MODERNIZE BUILDING-A PROJECT IS A GENERAL CLASSROOM BUILDING THAT INCLUDES COSMETOLOGY, NURSING, MUSIC, LIBERAL ARTS AND THEATER. THIS BUILDING OPENED SPRING 2012.



THE LEARNING ASSISTANCE CENTER RENOVATION PROJECT REPLACES THE BUILDING ENVELOPE, RENOVATES THE INTERIORS AND RECONSTRUCTS THE BASEMENT. THIS BUILDING IS SCHEDULED TO OPEN SPRING 2013.

# LOS ANGELES TRADE-TECH COLLEGE - PROJECT LIST/ SUPPORT SERVICES

PROJECT NAME	STATUS	BUDGET AT COMPLETION
SOUTH CAMPUS	COMPLETED	\$101,358,635
AUTO, METAL BUILDING	COMPLETED	\$7,942,904
LIBERAL ARTS BUILDING	COMPLETED	\$69,423,535
CONSTRUCTION TECHNOLOGY BUILDING	COMPLETED	\$2,126,044
GYMNASIUM	COMPLETED	\$1,875,551
MATH AND SCIENCE BUILDING	COMPLETED	\$2,308,626
FASHION AND FINE ARTS BUILDING - PHASE I	COMPLETED	\$5,258,470
BUILDING C	COMPLETED	\$55,338
BUILDING E	COMPLETED	\$453,877
OLIVE STREET PARKING	COMPLETED	\$13,403,996
CAMPUS-WIDE INFRASTRUCTURE - EMERGENCY LIGHTING, FIRE ALARM AND SECURITY SYSTEMS	COMPLETED	\$1,746,312
RWGPL - F RAMP	COMPLETED	\$4,395,725
CAMPUS-WIDE IMPROVEMENTS - PHASE II	COMPLETED	\$5,294,704
DEMAND SIDE ENERGY OPTIMIZATION	COMPLETED	\$57,212
TRANSPORTATION AND ACCESSIBILITY IMPROVEMENTS	COMPLETED	\$167,744
CHILD DEVELOPMENT CENTER	COMPLETED	\$12,621,736
LAND ACQUISITION - SOUTH CAMPUS	COMPLETED	\$18,826,872
LAND ACQUISITION - EAST CAMPUS	COMPLETED	\$33,500,516
BULK PROCUREMENT	COMPLETED	\$461
LEARNING RESOURCES CENTER	CONSTRUCTION	\$40,084,886
CAMPUS-WIDE IMPROVEMENTS - PHASE I	CONSTRUCTION	\$21,993,553
EAST PARKING STRUCTURE	DESIGN	\$23,570,891
CAMPUS-WIDE IMPROVEMENTS - PHASE III	DESIGN	\$7,666,546
ART AND CULINARY ARTS BUILDING	PLANNING	\$33,826,585
PERFORMING ARTS CENTER	PLANNING	\$10,128,990
CAMPUS-WIDE INFRASTRUCTURE - MAIN ELECTRICAL DISTRIBUTION SYSTEM	PLANNING	\$9,058,800
RE-GROUT AND SEAL TILES IN RESTROOMS	ON HOLD	\$4,955
CONSTRUCTION TRADES CENTER	MORATORIUM	\$86,087,595
FASHION AND FINE ARTS BUILDING - PHASE II	MORATORIUM	\$13,709,175
SOUTH CAMPUS SINGLE LEVEL PARKING & ATHLETIC FIELD	MORATORIUM	\$173,353
WELLNESS CENTER	MORATORIUM	\$114,758
RWGPL - GRAND AVENUE ENHANCEMENT	MORATORIUM	\$6,256,454
RWGPL - BLUE LINE STATION EXTENSION	MORATORIUM	\$1,261,098
MASTER PLANNING	ONGOING	\$1,645,940
CAMPUS-WIDE IMPROVEMENTS - NORTH QUAD	ONGOING	\$3,364,609
CAMPUS PROJECT SUPPORT	ONGOING	\$42,087,469
<b>TOTAL</b>		<b>\$581,853,916</b>

# Los Angeles Valley College Project Highlights



**THE NEW LIBRARY/LEARNING ASSISTANCE CENTER HAS 93,000 SQUARE FEET AND WILL PROVIDE A COMPUTER LEARNING CENTER, A TUTORIAL LEARNING CENTER, A STAFF DEVELOPMENT TRAINING FACILITY, AND OFFICE SPACE TO ACCOMMODATE THE STAFF. THIS BUILDING IS SCHEDULED TO OPEN FALL 2012.**



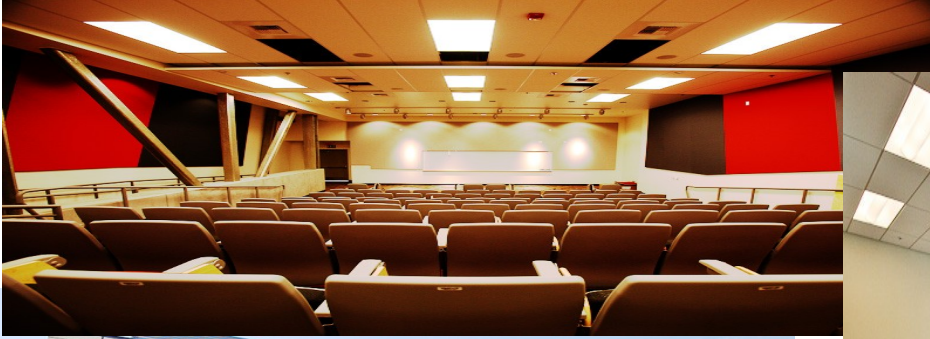
**THE MTA BUS EXTENSION PROJECT PROVIDES A DIRECT PEDESTRIAN CONNECTION FROM THE MTA BUS STATION ADJACENT TO CAMPUS TO THE NEW COLLEGE ENTRANCE. THIS PROJECT INCLUDES PAVING, LANDSCAPING, LIGHTING, SIGNAGE, A MARQUEE SIGN, AND STREET FURNITURE. THIS PROJECT WAS COMPLETED SUMMER 2012.**



## LOS ANGELES VALLEY COLLEGE - PROJECT LIST/ SUPPORT SERVICES

PROJECT NAME	STATUS	BUDGET AT COMPLETION
ALLIED HEALTH AND SCIENCES CENTER	COMPLETED	\$67,063,606
CAMPUS IMPROVEMENT - CENTRAL PLANT/UTILITIES INFRASTRUCTURE	COMPLETED	\$26,711,739
LIBRARY AND LEARNING RESOURCE CENTER	COMPLETED	\$39,740,361
MAINTENANCE AND OPERATIONS, SHERIFF STATION	COMPLETED	\$8,778,560
LIFE SCIENCES BUILDING	COMPLETED	\$1,630,969
PLANETARIUM BUILDING MODERNIZATION	COMPLETED	\$2,480,993
ENGINEERING BUILDING	COMPLETED	\$1,709,142
MATH AND SCIENCE BUILDING	COMPLETED	\$1,558,124
HUMANITIES BUILDING	COMPLETED	\$1,756,393
CAMPUS CENTER BUILDING - PHASE I	COMPLETED	\$1,010,538
ART BUILDING	COMPLETED	\$2,414,495
MUSIC BUILDING	COMPLETED	\$1,962,449
GYM BUILDING	COMPLETED	\$23,000,977
ADMIN BUILDING	COMPLETED	\$478,827
CHILD DEVELOPMENT CENTER	COMPLETED	\$16,749,458
FAMILY RESOURCE CENTER	COMPLETED	\$1,754,739
FIELD HOUSE	COMPLETED	\$8,168,902
CAMPUS-WIDE RESTROOMS	COMPLETED	\$2,593,793
STUDENT SERVICE CENTER	COMPLETED	\$27,443,208
BUSINESS JOURNALISM BUILDING	COMPLETED	\$1,919,667
FOREIGN LANGUAGE BUILDING	COMPLETED	\$1,165,326
BEHAVIORAL SCIENCE BUILDING	COMPLETED	\$965,444
MOTION PICTURE BUILDING	COMPLETED	\$3,607,059
THEATRE ARTS BUILDING	COMPLETED	\$3,215,025
RWGPL	COMPLETED	\$14,421,682
CAMPUS IMPROVEMENT - IT DEPARTMENT	COMPLETED	\$4,460,218
MTA BUS STATION EXTENSION	CONSTRUCTION	\$2,877,002
ATHLETIC TRAINING FACILITY-BASEBALL STADIUM BLEACHER	DESIGN	\$29,786,770
MULTI-PURPOSE COMMUNITY SERVICES CENTER	DESIGN	\$20,909,147
PARKING STRUCTURE	DESIGN	\$20,421,652
MONARCH CENTER (STUDENT UNION)	DESIGN	\$36,206,846
CAMPUS-WIDE IMPROVEMENTS - UPGRADE	DESIGN	\$5,519,975
CAMPUS INFRASTRUCTURE - ENERGY INFRASTRUCTURE AND SECURITY SYSTEM IMPROVEMENTS	PLANNING	\$6,078,018
CAMPUS-WIDE IMPROVEMENTS - CAMPUS SAFETY	ON HOLD	\$1,807,416
MEDIA AND PERFORMING ARTS CENTER	MORATORIUM	\$86,217,609
CAMPUS CENTER BUILDING - PHASE II	MORATORIUM	\$4,484,159
COMMUNITY WORKFORCE DEVELOPMENT CENTER/NEW ADMINISTRATION	MORATORIUM	\$43,187,992
PARKING LOTS/INTERNAL ROADS	MORATORIUM	\$8,086,472
SUSTAINABLE MALL	MORATORIUM	\$3,403,810
NEW PLANETARIUM EXPANSION	MORATORIUM	\$5,225,037
BUSINESS RENOVATION (FOR ENV CTR/AHS/EMS)	NOT IN USE	\$0
TEMPORARY FACILITIES	NOT IN USE	\$0
LAND ACQUISITION - PANORAMA CITY EDUCATION	ONGOING	\$6,036,603
MASTER PLANNING	ONGOING	\$11,050,822
CAMPUS PROJECT SUPPORT	ONGOING	\$51,723,708
BULK PROCUREMENT	ONGOING	\$546
<b>TOTAL</b>		<b>\$609,785,278</b>

# West Los Angeles College Project Highlights



**THE NEW GENERAL CLASSROOM BUILDING HAS 44,604 SQUARE FEET AND PROVIDES CLASSROOMS, FACULTY OFFICES AND SUPPORT SPACES FOR THE LIBERAL ARTS PROGRAM. THIS BUILDING OPENED SPRING 2012.**



**THE NEW STUDENT SERVICES COMPLEX HAS 54,070 SQUARE FEET AND PROVIDES FOR CONSOLIDATION OF ALL STUDENT SERVICES AND INCLUDES THE BOOKSTORE AND FOOD SERVICES AREAS. THIS BUILDING OPENED SPRING 2012.**

# WEST LOS ANGELES COLLEGE - PROJECT LIST/ SUPPORT SERVICES

PROJECT NAME	STATUS	BUDGET AT COMPLETION
SCIENCE AND MATH BUILDING	COMPLETED	\$64,653,643
HELDMAN LEARNING RESOURCE CENTER	COMPLETED	\$4,262,876
STUDENT SERVICES BUILDING	COMPLETED	\$38,093,929
PARKING STRUCTURE - LOT 8	COMPLETED	\$27,887,638
GENERAL CLASSROOM	COMPLETED	\$29,202,197
RWGPL - LANDSCAPE/HARDSCAPE	COMPLETED	\$8,534,038
CAMPUS IMPROVEMENTS - SIGNAGE FOR SAFETY AND PUBLIC INFORMATION	COMPLETED	\$504,412
CAMPUS IMPROVEMENTS - ATHLETIC COMPLEX	COMPLETED	\$8,356,666
COLLEGE BOULEVARD - SECOND ACCESS ROAD	COMPLETED	\$14,980,073
CENTRAL PLANT	CONSTRUCTION	\$17,035,440
CAMPUS IMPROVEMENTS - STREET IMPROVEMENTS FIRE SERVICE ROAD	CONSTRUCTION	\$1,846,895
ALLIED HEALTH AND WELLNESS	DESIGN	\$18,926,191
CAMPUS IMPROVEMENTS - INFRASTRUCTURE BUS ROUTE TURN AROUND	DESIGN	\$304,300
NORTH PARKING STRUCTURE AND PV FARM	ON HOLD	\$11,850,228
CAREER EDUCATION	MORATORIUM	\$2,265,609
PHYSICAL EDUCATION & DANCE	MORATORIUM	\$7,480,236
PLANT FACILITIES CENTER - FMO	MORATORIUM	\$3,253,804
WATSON CENTER	MORATORIUM	\$9,614,899
TECHNOLOGY LEARNING CENTER	MORATORIUM	\$39,306,877
CAMPUS ENTRY GATEWAY	MORATORIUM	\$578,525
WATSON CENTER 2	MORATORIUM	\$7,580
LAND ACQUISITION - 10100 PROPERTY	ONGOING	\$47,643,674
MASTER PLANNING	ONGOING	\$8,002,405
CAMPUS PROJECT SUPPORT	ONGOING	\$49,869,402
BULK PROCUREMENT	ONGOING	\$355
<b>TOTAL</b>		<b>\$414,461,894</b>

# Satellites and Multicampus

## SATELLITE AND MULTI-CAMPUS - SUMMARY

PROJECT NAME	STATUS	BUDGET AT COMPLETION
MISSION COLLEGE - SUNLAND/TUJUNGA	MORATORIUM	\$25,000,000
VALLEY COLLEGE - BURBANK	MORATORIUM	\$5,000,000
WEST COLLEGE - LAX	MORATORIUM	\$40,000,000
HEALTH CAREERS ACADEMY AT COUNTY GENERAL	MORATORIUM	\$13,761,468
SOUTHWEST MUSEUM	CANCELLED	\$0
DISTRICT 770 HQ	ACTIVE	\$50,804,778
LACCD VAN DE KAMP INNOVATION CAMPUS	COMPLETED	\$92,847,179
ELAC FIRESTONE FACTORY BUILDING	ACTIVE	\$208,795,893
<b>TOTAL</b>		<b>\$436,209,317</b>

## VAN DE KAMP INNOVATION CAMPUS - PROJECT LIST/SUPPORT SERVICES

PROJECT NAME	STATUS	BUDGET AT COMPLETION
NEW EDUCATION BUILDING	COMPLETED	\$26,324,597
CENTRAL PLANT	COMPLETED	\$5,674,320
SAN FERNANDO ROAD STREET WIDENING	COMPLETED	\$482,165
BAKERY BUILDING	COMPLETED	\$30,817,677
LAND ACQUISITION - NORTHEAST	COMPLETED	\$6,838,675
LAND ACQUISITION	COMPLETED	\$12,311,573
MASTER PLANNING	COMPLETED	\$280,144
CAMPUS PROJECT SUPPORT	COMPLETED	\$9,930,386
BULK PROCUREMENT	COMPLETED	\$153
EDUCATIONAL CENTER STATUS	CANCELLED	\$187,489
<b>TOTAL</b>		<b>\$92,847,179</b>

## ELAC - FIRESTONE FACTORY BUILDING - PROJECT LIST/SUPPORT SERVICES

PROJECT NAME	STATUS	BUDGET AT COMPLETION
CAMPUS PROJECT SUPPORT	COMPLETED	\$17,528,500
FIRESTONE SITE IMPROVEMENTS	PLANNING	\$131,083,159
LAND ACQUISITION	COMPLETED	\$58,799,458
MASTER PLAN	ON GOING	\$1,384,624
BULK PROCUREMENT	CANCELLED	\$152
<b>TOTAL</b>		<b>\$208,795,893</b>

# College Project Central Services

## COLLEGE PROJECT CENTRAL SERVICES - PROGRAM HOLDING/SUSPENSE ACCOUNT

PROJECT NAME	STATUS	BUDGET AT COMPLETION
PROGRAM HOLDING/SUSPENSE ACCOUNT	ACTIVE	\$2,987,223
<b>TOTAL</b>		<b>\$2,987,223</b>

## COLLEGE PROJECT CENTRAL SERVICES - OWNER CONTROLLED INSURANCE PROGRAM (OCIP)

PROJECT NAME	STATUS	BUDGET AT COMPLETION
OCIP - CITY	ACTIVE	\$5,256,203
OCIP - EAST	ACTIVE	\$10,545,049
OCIP - HARBOR	ACTIVE	\$7,014,105
OCIP - MISSION	ACTIVE	\$6,932,647
OCIP - PIERCE	ACTIVE	\$10,472,576
OCIP - SOUTHWEST	ACTIVE	\$6,734,801
OCIP - TRADE	ACTIVE	\$8,140,777
OCIP - VALLEY	ACTIVE	\$6,495,970
OCIP - WEST	ACTIVE	\$6,514,781
OCIP - DISTRICT 770 HQ	ACTIVE	\$2,239
OCIP - ADA COMPLIANCE	ACTIVE	\$2,134,005
OCIP - ESCROW DEPOSIT	ACTIVE	\$10,916,471
OCIP - HEALTH CAREERS ACADEMY	ACTIVE	\$509,053
OCIP - SOUTHGATE	ACTIVE	\$3,672,996
OCIP - STORM WATER	ACTIVE	\$811,459
OCIP - PROP A/AA	ACTIVE	\$20,897
<b>TOTAL</b>		<b>\$86,174,030</b>

## COLLEGE PROJECT CENTRAL SERVICES - RECYCLING

PROJECT NAME	STATUS	BUDGET AT COMPLETION
RECYCLING - CITY	COMPLETED	\$836,250
RECYCLING - EAST	COMPLETED	\$1,033,738
RECYCLING - HARBOR	COMPLETED	\$678,816
RECYCLING - MISSION	COMPLETED	\$613,861
RECYCLING - PIERCE	COMPLETED	\$848,462
RECYCLING - SOUTHWEST	COMPLETED	\$839,784
RECYCLING - TRADE	COMPLETED	\$747,826
RECYCLING - VALLEY	COMPLETED	\$879,232

**COLLEGE PROJECT CENTRAL SERVICES - RECYCLING CONT.**

PROJECT NAME	STATUS	BUDGET AT COMPLETION
RECYCLING - WEST	COMPLETED	\$1,315,303
RECYCLING - SOUTHGATE	COMPLETED	\$48,102
<b>TOTAL</b>		<b>\$7,841,374</b>

**COLLEGE PROJECT CENTRAL SERVICES - FURNITURE, FIXTURES AND EQUIPMENT (FF&E)**

PROJECT NAME	STATUS	BUDGET AT COMPLETION
FF & E - CITY	ACTIVE	\$6,132,369
FF & E - EAST	ACTIVE	\$9,340,505
FF & E - HARBOR	ACTIVE	\$3,091,086
FF & E - MISSION	ACTIVE	\$3,983,068
FF & E - PIERCE	ACTIVE	\$7,463,986
FF & E - SOUTHWEST	ACTIVE	\$3,457,388
FF & E - TRADE	ACTIVE	\$4,722,216
FF & E - VALLEY	ACTIVE	\$4,460,899
FF & E - WEST	ACTIVE	\$4,570,457
FF & E - DISTRICT 770 HQ	ACTIVE	\$22,376
FF & E - SOUTHGATE	ACTIVE	\$3,312,034
<b>TOTAL</b>		<b>\$50,556,384</b>

**COLLEGE PROJECT CENTRAL SERVICES - LEGAL/AUDIT**

PROJECT NAME	STATUS	BUDGET AT COMPLETION
LEGAL - CITY	ACTIVE	\$2,901,057
LEGAL - EAST	ACTIVE	\$3,167,248
LEGAL - HARBOR	ACTIVE	\$2,061,473
LEGAL - MISSION	ACTIVE	\$2,123,298
LEGAL - PIERCE	ACTIVE	\$2,882,001
LEGAL - SOUTHWEST	ACTIVE	\$1,979,346
LEGAL - TRADE	ACTIVE	\$2,791,990
LEGAL - VALLEY	ACTIVE	\$2,794,090
LEGAL - WEST	ACTIVE	\$1,989,379
LEGAL - ADA COMPLIANCE	ACTIVE	\$632,141
LEGAL - ANTI-GRAFFITI	ACTIVE	\$56,841
LEGAL - HEALTH CAREERS ACADEMY	ACTIVE	\$150,834

## COLLEGE PROJECT CENTRAL SERVICES - LEGAL/AUDIT CONT.

PROJECT NAME	STATUS	BUDGET AT COMPLETION
LEGAL - VAN DE KAMP	ACTIVE	\$470,369
LEGAL - SOUTHGATE	ACTIVE	\$1,116,883
LEGAL - STORM WATER	ACTIVE	\$240,364
LEGAL - WARRANTY PROGRAM	ACTIVE	\$92,602
LEGAL - WHOLE BUILDING	ACTIVE	\$109,973
<b>TOTAL</b>		<b>\$25,559,888</b>

## COLLEGE PROJECT CENTRAL SERVICES - ASSET MANAGEMENT

PROJECT NAME	STATUS	BUDGET AT COMPLETION
ASSET MGMT - CITY	ACTIVE	\$3,258,699
ASSET MGMT - EAST	ACTIVE	\$4,785,362
ASSET MGMT - HARBOR	ACTIVE	\$1,441,182
ASSET MGMT - MISSION	ACTIVE	\$2,042,464
ASSET MGMT - PIERCE	ACTIVE	\$3,817,840
ASSET MGMT - SOUTHWEST	ACTIVE	\$2,565,735
ASSET MGMT - TRADE	ACTIVE	\$2,515,780
ASSET MGMT - VALLEY	ACTIVE	\$2,383,057
ASSET MGMT - WEST	ACTIVE	\$2,297,256
ASSET MGMT - DISTRICT 770 HQ	ACTIVE	\$3,000,000
ASSET MGMT - SOUTHGATE	ACTIVE	\$1,794,430
SAP COMPUTERIZED MAINTENANCE MANAGEMENT SYSTEM	ACTIVE	\$9,594,000
PVJOBS - OUTREACH FOR SMALL LOCAL AND EMERGING, PLA, INTERNSHIPS, AND APPRENTICESHIPS	ACTIVE	\$37,015,438
<b>TOTAL</b>		<b>\$76,511,244</b>

## COLLEGE PROJECT CENTRAL SERVICES - MOVE MANAGEMENT

PROJECT NAME	PROJECT NAME	BUDGET AT COMPLETION
MOVE MGMT - CITY	ACTIVE	\$7,244,196
MOVE MGMT - EAST	ACTIVE	\$10,638,021
MOVE MGMT - HARBOR	ACTIVE	\$3,203,797
MOVE MGMT - MISSION	ACTIVE	\$4,540,465
MOVE MGMT - PIERCE	ACTIVE	\$8,487,184
MOVE MGMT - SOUTHWEST	ACTIVE	\$4,055,059
MOVE MGMT - TRADE	ACTIVE	\$5,798,040
MOVE MGMT - VALLEY	ACTIVE	\$5,297,614

## COLLEGE PROJECT CENTRAL SERVICES - MOVE MANAGEMENT CONT.

PROJECT NAME	STATUS	BUDGET AT COMPLETION
MOVE MGMT - WEST	ACTIVE	\$5,106,877
MOVE MGMT - SOUTHGATE	ACTIVE	\$3,989,078
<b>TOTAL</b>		<b>\$58,360,331</b>

## COLLEGE PROJECT CENTRAL SERVICES - PROGRAM MANAGEMENT

PROJECT NAME	STATUS	BUDGET AT COMPLETION
PROGRAM MGMT – CITY	ACTIVE	\$7,735,835
PROGRAM MGMT – EAST	ACTIVE	\$8,599,743
PROGRAM MGMT – HARBOR	ACTIVE	\$5,616,800
PROGRAM MGMT – MISSION	ACTIVE	\$5,521,327
PROGRAM MGMT – PIERCE	ACTIVE	\$8,771,270
PROGRAM MGMT – SOUTHWEST	ACTIVE	\$5,534,353
PROGRAM MGMT – TRADE	ACTIVE	\$7,840,338
PROGRAM MGMT – VALLEY	ACTIVE	\$7,570,620
PROGRAM MGMT – WEST	ACTIVE	\$5,850,183
PROGRAM MGMT – ANTI-GRAFFITI	ACTIVE	\$0
PROGRAM MGMT – ENERGY	ACTIVE	\$0
PROGRAM MGMT – HEALTH CAREERS ACADEMY	ACTIVE	\$0
PROGRAM MGMT – JUNE 2012 - DEC 2016	ACTIVE	\$72,905,983
PROGRAM MGMT – SOUTHGATE	ACTIVE	\$2,375,400
PROGRAM MGMT – STORM WATER	ACTIVE	\$0
PROGRAM MGMT – WHOLE BUILDING	ACTIVE	\$0
PROGRAM MGMT – ADA COMPLIANCE	ACTIVE	\$0
PROGRAM MGMT – WARRANTY PROGRAM	ACTIVE	\$0
<b>TOTAL</b>		<b>\$138,321,851</b>

## COLLEGE PROJECT CENTRAL SERVICES - PROJECT MANAGEMENT

PROJECT NAME	STATUS	BUDGET AT COMPLETION
PROJECT MGMT – CITY	ACTIVE	\$34,508
PROJECT MGMT - EAST	ACTIVE	\$38,362
PROJECT MGMT - HARBOR	ACTIVE	\$24,980
PROJECT MGMT - MISSION	ACTIVE	\$198,362
PROJECT MGMT - PIERCE	ACTIVE	\$112,523



## COLLEGE PROJECT CENTRAL SERVICES - PROJECT MANAGEMENT CONT.

PROJECT NAME	STATUS	BUDGET AT COMPLETION
PROJECT MGMT - SOUTHWEST	ACTIVE	\$24,685
PROJECT MGMT - TRADE	ACTIVE	\$34,978
PROJECT MGMT - VALLEY	ACTIVE	\$33,763
PROJECT MGMT - WEST	ACTIVE	\$562,879
PROJECT MGMT - SOUTHGATE	ACTIVE	\$19,909
<b>TOTAL</b>		<b>\$1,084,949</b>

## COLLEGE PROJECT CENTRAL SERVICES - SPECIALTY CONSULTING

PROJECT NAME	STATUS	BUDGET AT COMPLETION
SPECIALTY CONSULTING - CITY	ACTIVE	\$6,110,827
SPECIALTY CONSULTING - EAST	ACTIVE	\$6,990,894
SPECIALTY CONSULTING - HARBOR	ACTIVE	\$4,403,907
SPECIALTY CONSULTING - MISSION	ACTIVE	\$4,581,158
SPECIALTY CONSULTING - PIERCE	ACTIVE	\$5,923,212
SPECIALTY CONSULTING - SOUTHWEST	ACTIVE	\$4,088,030
SPECIALTY CONSULTING - TRADE	ACTIVE	\$6,347,744
SPECIALTY CONSULTING - VALLEY	ACTIVE	\$5,984,441
SPECIALTY CONSULTING - WEST	ACTIVE	\$3,510,662
SPECIALTY CONSULTING - SOUTHGATE	ACTIVE	\$2,345,570
<b>TOTAL</b>		<b>\$50,286,445</b>

## COLLEGE PROJECT CENTRAL SERVICES - AUDIT

PROJECT NAME	STATUS	BUDGET AT COMPLETION
AUDIT - CITY	ACTIVE	\$1,326,386
AUDIT - EAST	ACTIVE	\$1,472,534
AUDIT - HARBOR	ACTIVE	\$956,981
AUDIT - MISSION	ACTIVE	\$958,380
AUDIT - PIERCE	ACTIVE	\$1,435,315
AUDIT - SOUTHWEST	ACTIVE	\$913,887
AUDIT - TRADE	ACTIVE	\$1,291,146
AUDIT - VALLEY	ACTIVE	\$1,291,850
AUDIT - WEST	ACTIVE	\$913,102
AUDIT - HEALTH CAREERS ACADEMY	ACTIVE	\$67,704
AUDIT - STORM WATER	ACTIVE	\$107,891
AUDIT - ANTI-GRAFFITI	ACTIVE	\$25,337
AUDIT - ADA COMPLIANCE	ACTIVE	\$283,746
AUDIT - SOUTHGATE	ACTIVE	\$505,359
AUDIT - WARRANTY PROGRAM	ACTIVE	\$43,540
AUDIT - WHOLE BUILDING	ACTIVE	\$47,388
<b>TOTAL</b>		<b>\$11,640,546</b>

# Districtwide Initiatives

## DISTRICTWIDE INITIATIVES - ENERGY

PROJECT NAME	STATUS	BUDGET AT COMPLETION
RENEWABLE ENERGY - CITY	ACTIVE	\$7,061,707
RENEWABLE ENERGY -EAST	ACTIVE	\$10,113,706
RENEWABLE ENERGY - HARBOR	ACTIVE	\$30,578,236
RENEWABLE ENERGY - MISSION	ACTIVE	\$7,047,930
RENEWABLE ENERGY - PIERCE	ACTIVE	\$19,333,452
RENEWABLE ENERGY - SOUTHWEST	ACTIVE	\$8,703,626
RENEWABLE ENERGY - TRADE	ACTIVE	\$11,411,724
RENEWABLE ENERGY - ENERGY	ACTIVE	\$2,215,706
RENEWABLE ENERGY - VALLEY	ACTIVE	\$7,255,627
RENEWABLE ENERGY – WEST	ACTIVE	\$5,349,283
RENEWABLE ENERGY - SOUTHGATE	ACTIVE	\$1,823,155
RENEWABLE ENERGY - VAN DE KEMP	ACTIVE	\$3,064,877
RENEWABLE ENERGY - 770 HQ	ACTIVE	\$20,079
RENEWABLE ENERGY - DISTRICTWIDE	ACTIVE	\$3,131,341
RENEWABLE ENERGY - MANAGEMENT AND DEMAND RESPONSE	ACTIVE	\$10,043,377
RENEWABLE ENERGY - OWNER'S RESPONSE	ACTIVE	\$4,078,673
<b>TOTAL</b>		<b>\$131,232,500</b>

## DISTRICTWIDE INITIATIVES - ADA COMPLIANCE

PROJECT NAME	STATUS	BUDGET AT COMPLETION
ADA COMPLIANCE - CITY	ACTIVE	\$3,990,214
ADA COMPLIANCE - EAST	ACTIVE	\$13,973,046
ADA COMPLIANCE - HARBOR	ACTIVE	\$3,561,800
ADA COMPLIANCE - MISSION	ACTIVE	\$4,534,604
ADA COMPLIANCE - PIERCE	ACTIVE	\$6,450,337
ADA COMPLIANCE - SOUTHWEST	ACTIVE	\$2,133,912
ADA COMPLIANCE - TRADE	ACTIVE	\$9,015,297
ADA COMPLIANCE - VALLEY	ACTIVE	\$13,277,599
ADA COMPLIANCE -WEST	ACTIVE	\$8,218,001
ADA COMPLIANCE - SOUTHGATE	ACTIVE	\$112,044
ADA COMPLIANCE - VAN DE KAMP	ACTIVE	\$482,498
ADA COMPLIANCE - DISTRICT 770 HQ	ACTIVE	\$48,844
ADA COMPLIANCE - OWNER'S RESERVE	ACTIVE	\$3,180,673
<b>TOTAL</b>		<b>\$68,978,869</b>

## DISTRICTWIDE INITIATIVES - TECHNOLOGY

PROJECT NAME	STATUS	BUDGET AT COMPLETION
STUDENT INFORMATION SYSTEM (SIS)	ACTIVE	\$53,714,225
CONNECT LACCD NETWORK	MORATORIUM	\$49,132,200
ONE CARD SYSTEM (PHYSICAL SECURITY) AND MONITORING	ACTIVE	\$6,000,000
FACILITY MANAGEMENT (CMMS) AND BUILDING MANAGEMENT INTER-FACE	ACTIVE	\$6,000,000
DISTANCE EDUCATION COLLABORATION	ACTIVE	\$100,000
MEDIA LAB ENHANCEMENT	ACTIVE	\$100,000
ENTERPRISE HELP DESK/KNOWLEDGE MANAGEMENT	ACTIVE	\$100,000
STANDARDS, PROCESS MAPPING AND PROGRAM STRATEGY/ MANAGEMENT	ACTIVE	\$1,907,200
TECHNOLOGY COORDINATORS	ACTIVE	\$9,731,999
<b>TOTAL</b>		<b>\$126,785,624</b>

## DISTRICTWIDE INITIATIVES - ANTI-GRAFFITI PROGRAM

PROJECT NAME	STATUS	BUDGET AT COMPLETION
ANTI-GRAFFITI PROGRAM - CITY	ACTIVE	\$72,173
ANTI-GRAFFITI PROGRAM - EAST	ACTIVE	\$212,723
ANTI-GRAFFITI PROGRAM - HARBOR	ACTIVE	\$218,514
ANTI-GRAFFITI PROGRAM - MISSION	ACTIVE	\$51,508
ANTI-GRAFFITI PROGRAM – PIERCE	ACTIVE	\$107,258
ANTI-GRAFFITI PROGRAM - SOUTHWEST	ACTIVE	\$134,406
ANTI-GRAFFITI PROGRAM - TRADE	ACTIVE	\$162,046
ANTI-GRAFFITI PROGRAM - VALLEY	ACTIVE	\$70,621
ANTI-GRAFFITI PROGRAM - WEST	ACTIVE	\$80,009
ANTI-GRAFFITI PROGRAM - SOUTHGATE	ACTIVE	\$35,807
ANTI-GRAFFITI PROGRAM - OWNER'S RESERVE	ACTIVE	\$0
<b>TOTAL</b>		<b>\$1,145,065</b>

## DISTRICTWIDE INITIATIVES - WARRANTY PROGRAM

PROJECT NAME	STATUS	BUDGET AT COMPLETION
WARRANTY PROGRAM - CITY	ACTIVE	\$659,520
WARRANTY PROGRAM - EAST	ACTIVE	\$735,956
WARRANTY PROGRAM - HARBOR	ACTIVE	\$477,431
WARRANTY PROGRAM - MISSION	ACTIVE	\$470,605
WARRANTY PROGRAM - PIERCE	ACTIVE	\$747,746
WARRANTY PROGRAM - SOUTHWEST	ACTIVE	\$471,743
WARRANTY PROGRAM - TRADE	ACTIVE	\$1,109,921
WARRANTY PROGRAM - VALLEY	ACTIVE	\$645,298
WARRANTY PROGRAM - WEST	ACTIVE	\$468,899
WARRANTY PROGRAM - SOUTHGATE	ACTIVE	\$326,686
WARRANTY PROGRAM - VAN DE KEMP	ACTIVE	\$19,548
WARRANTY PROGRAM - OWNER'S RESERVE	ACTIVE	\$0
<b>TOTAL</b>		<b>\$6,133,353</b>

## DISTRICTWIDE INITIATIVES - WHOLE BUILDING COMMISSIONING

PROJECT NAME	STATUS	BUDGET AT COMPLETION
WHOLE BUILDING - CITY	ACTIVE	\$1,281,853
WHOLE BUILDING - EAST	ACTIVE	\$1,424,739
WHOLE BUILDING - HARBOR	ACTIVE	\$927,973
WHOLE BUILDING - MISSION	ACTIVE	\$1,361,089
WHOLE BUILDING - PIERCE	ACTIVE	\$1,453,460
WHOLE BUILDING - SOUTHWEST	ACTIVE	\$916,814
WHOLE BUILDING - TRADE	ACTIVE	\$1,298,805
WHOLE BUILDING - VALLEY	ACTIVE	\$1,254,236
WHOLE BUILDING - WEST	ACTIVE	\$911,403
WHOLE BUILDING - SOUTHGATE	ACTIVE	\$635,232
WHOLE BUILDING - VAN DE KAMP	ACTIVE	\$27,470
WHOLE BUILDING - OWNER'S RESERVE	ACTIVE	\$0
<b>TOTAL</b>		<b>\$11,493,074</b>

## DISTRICTWIDE INITIATIVES - STORM WATER

PROJECT NAME	STATUS	BUDGET AT COMPLETION
STORM WATER - CITY	PLANNING	\$172,761
STORM WATER - EAST	DESIGN	\$243,751
STORM WATER - HARBOR	PLANNING	\$127,294
STORM WATER - MISSION	DESIGN	\$1,861,732
STORM WATER - PIERCE	PLANNING	\$244,266
STORM WATER - SOUTHWEST	CONSTRUCTION	\$1,702,900
STORM WATER - TRADE	PLANNING	\$149,408
STORM WATER - VALLEY	PLANNING	\$2,186,003
STORM WATER - WEST	DESIGN	\$2,666,296
STORM WATER - SOUTHGATE	PLANNING	\$5,953
STORM WATER - VAN DE KAMP	PLANNING	\$276
STORM WATER - OWNER'S RESERVE	ACTIVE	\$13,633,740
<b>TOTAL</b>		<b>\$22,994,379</b>



# ACRONYMS AND ABBREVIATIONS

ADA: Americans with Disabilities Act

ASO: Associated Student Organization

ASU: American School and University

CMMS: Computerized Maintenance Managing System

DCOC: District Citizen's Oversight Committee

DSA: Division of State Architect

DSP&S: Disabled Student Program and Services

Env Ctr/ AHS/EMS: Environmental Center/Allied Health and Science/Energy Management System

EOPS: Extended Opportunities Program and Services

FF&E: Furniture, Fixtures and Equipment

FMO: Facilities, Maintenance and Operations

GSF: Gross Square Feet

HQ: Headquarters

HVAC: Heating, Ventilation and Air Conditioning

IT: Information Technology

KW: Kilowatts

LAUSD: Los Angeles Unified School District

LEED: Leadership in Energy and Environmental Design

OCIP: Owner Controlled Insurance Program

OIG: Office of Inspector General

PE: Physical Education

PV: Photovoltaic

RWGPL: Roadway, Walkway, Grounds, Parking Lots

SF: Square Feet

SIS: Student Information System

SLE: Student Learning Environment



## ACRONYMS AND ABBREVIATIONS CONTINUED

Specialty Consulting: Located in the “College Projects Central Services” list, this line item includes prevailing wage labor compliance program costs, small business bond assistance program costs, real estate consulting costs, construction documentation services, district wide design standards preparation, sustainability measurement, etc.

USGBC: United States Green Building Council

VPSS: Vice Presidents of Student Services

### ***Colleges:***

ELAC: East Los Angeles College

LACCD: Los Angeles Community College District

LACC: Los Angeles City College

LAHC: Los Angeles Harbor College

LAMC: Los Angeles Mission College

LAVC: Los Angeles Valley College

LAPC: Los Angeles Pierce College

LASC: Los Angeles Southwest College

LATTC: Los Angeles Trade Tech College

WLAC: West Los Angeles College

