

**Program Management Office
Safety Bulletin for July 2019**

Confined Space Safety Tips – OSHA Confined Space Entry & More

It's important to understand the OSHA confined space definition. This Safety Bulletin covers what OSHA considers a confined space, and the general confined space do's and don'ts.

What Is Considered a Confined Space by OSHA?

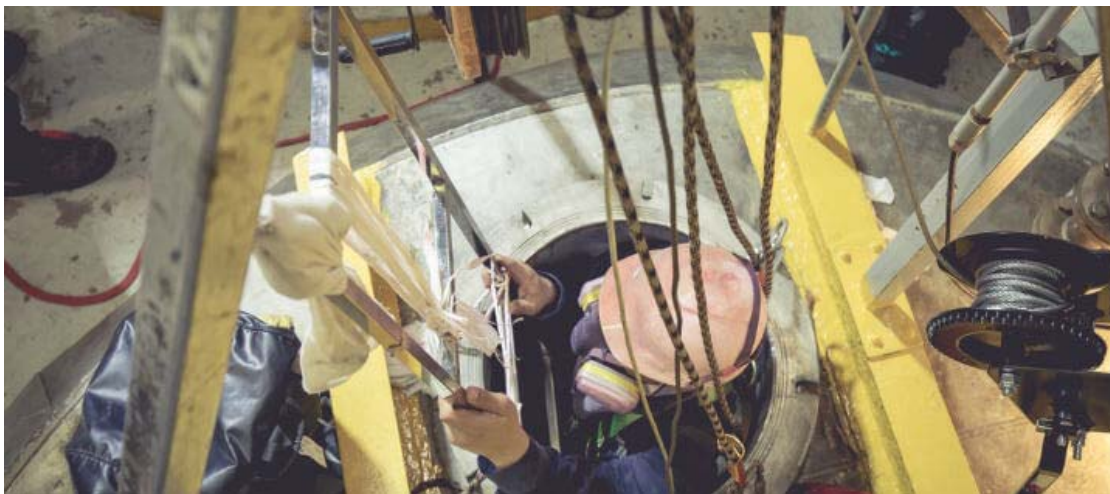
OSHA confined space is defined as a space that is not necessarily designed for people. Other OSHA confined space criteria? These spaces are large enough for a worker or workers to enter, carrying out particular tasks.

The confined spaces also have limited or restricted access and exit points. Such spaces are certainly not meant for continuous occupancy and jobs.

Confined Space Examples

The list goes on, but here are a few examples of OSHA confined space:

- Pits, Crawl spaces, Tanks, Vaults, Equipment housing, Storage bins, Silos, **Manholes**, Sewers, **Attic spaces**, Stairways



How Many Classes of Confined Spaces Are There?

There are two classes of confined spaces. You have non-permit confined spaces and **permit required** confined spaces. Non-permit confined spaces do not hold or possess the potential to hold any hazards that might cause death or serious physical harm to workers. Permit required confined spaces will be discussed below.

OSHA Permit Required Confined Space

This class of confined space poses a serious risk to the health of your workers. A permit required confined space will have at least one of these characteristics:

- Holds or possesses the potential to hold a hazardous atmosphere
- Holds a material that might engulf a worker who enters the space
- Possesses an internal configuration that might cause workers to become trapped or asphyxiated
- Holds any other observed or recognized hazards regarding health and safety

How Often Is Confined Space Training Required?

Before any work assignment even begins, workers must be trained. This includes any employee entering a permit required confined space. Sometimes job duties change, and you must provide additional training. You must also note if any new hazards present themselves or if a worker lacks understanding. Training is required in all these cases.



What Is Confined Space Entry?

OSHA confined space entry requires that confined spaces be identified first. You must then develop and assign entry permits.

These control measures for working in confined spaces are important. The written permit should be posted beside all entrances to confined spaces.



Confined Space Awareness vs. Entry

You know about entry permits, but confined space safety goes beyond that. Awareness is also important. This is more about the training and education of those working in confined spaces. The individuals include entrants, attendants, and supervisors – those who can enter a confined space. Getting to know the space and even taking related awareness classes are essential.

Confined Space Safety Tips

- Before you even enter a space, look for the permit prior to entry. The area should not have harmful substances or materials within.
- A trained individual should run oxygen, hydrogen, and explosive gas tests. All these results should be recorded on the work permit.
- A ventilator should never be used to draw air outside. Your fan should always be safe and grounded. And when it comes to ventilation, the atmosphere needs to be tested as much as possible. Make proper ventilation a priority.
- Keep an eye on other workers. If workers are in a confined space, **attendants should be in place to notify rescue teams in emergency situations.**
- Bear in mind your PPE. A harness, a lifeline, a gas monitoring device, or a self-contained breathing apparatus may be needed.

Read the OSHA confined space regulations for all the details.